

INVASIVE SPECIES MANAGEMENT SPECIFICATIONS:

THE RESTORED WOODLAND AND OFF-SITE RIVERFRONT AREA RESTORATION SHALL BE MANAGED FOR INVASIVE SPECIES DURING THEIR RESPECTIVE MONITORING PERIODS TO DETERMINE IF ANY INVASIVE/EXOTIC PLANTS INCLUDED ON THE INVASIVE PLANT LIST PROVIDED BY THE MASSACHUSETTS INVASIVE PLANTS ADVISORY GROUP HAVE COLONIZED THE RESTORED WOODLAND AND/OR OFF-SITE RIVERFRONT AREA RESTORATION ON THE MILL BROOK CONDO PROPERTY. SPECIFICALLY, THESE AREAS SHALL BE EVALUATED ONCE ANNUALLY DURING THE LATE SPRING/EARLY SUMMER TO DETECT INVASIVE EXOTIC PLANTS PRIOR TO SEED PRODUCTION.

OBSERVED INVASIVE PLANTS SHALL BE REMOVED FROM THE SITE EITHER BY HAND OR WITH HAND TOOLS (SHOVELS, WEED WRENCHES, ETC.) TO THE EXTENT PRACTICABLE AND APPROPRIATELY DISPOSED OF OFF-SITE. IF NON-MECHANICAL REMOVAL IS NOT PRACTICAL, THEN THE STEM SHALL BE CUT FLUSH TO THE GROUND IN THE LATE SUMMER PRIOR TO SEED PRODUCTION, AND THE CUT STEM SHALL IMMEDIATELY BE PAINTED OR DABBED WITH GLYPHOSATE BY A CERTIFIED HERBICIDE APPLICATOR.

UPON REMOVAL OF INVASIVE SHRUBS OR SAPLINGS, NATIVE SHRUBS OR SAPLINGS FROM THE APPROVED RESTORATION PLANTING PLAN SHALL BE INSTALLED TO ADEQUATELY RE-VEGETATE THE EXPOSED AREA. REPLACEMENT NATIVE SHRUBS OR SAPLINGS SHALL BE SELECTED BASED ON THE SIZE AND TYPE REFERENCED FOR THE AREA ON THE APPROVED RESTORATION PLAN, OR FUNCTIONAL EQUIVALENT NATIVE SHRUB OR SAPLING AT THE DISCRETION OF THE LANDSCAPE ARCHITECT OR WETLAND SCIENTIST CONDUCTING THE ANNUAL MONITORING AND OVERSEEING THE MANAGEMENT EFFORTS.

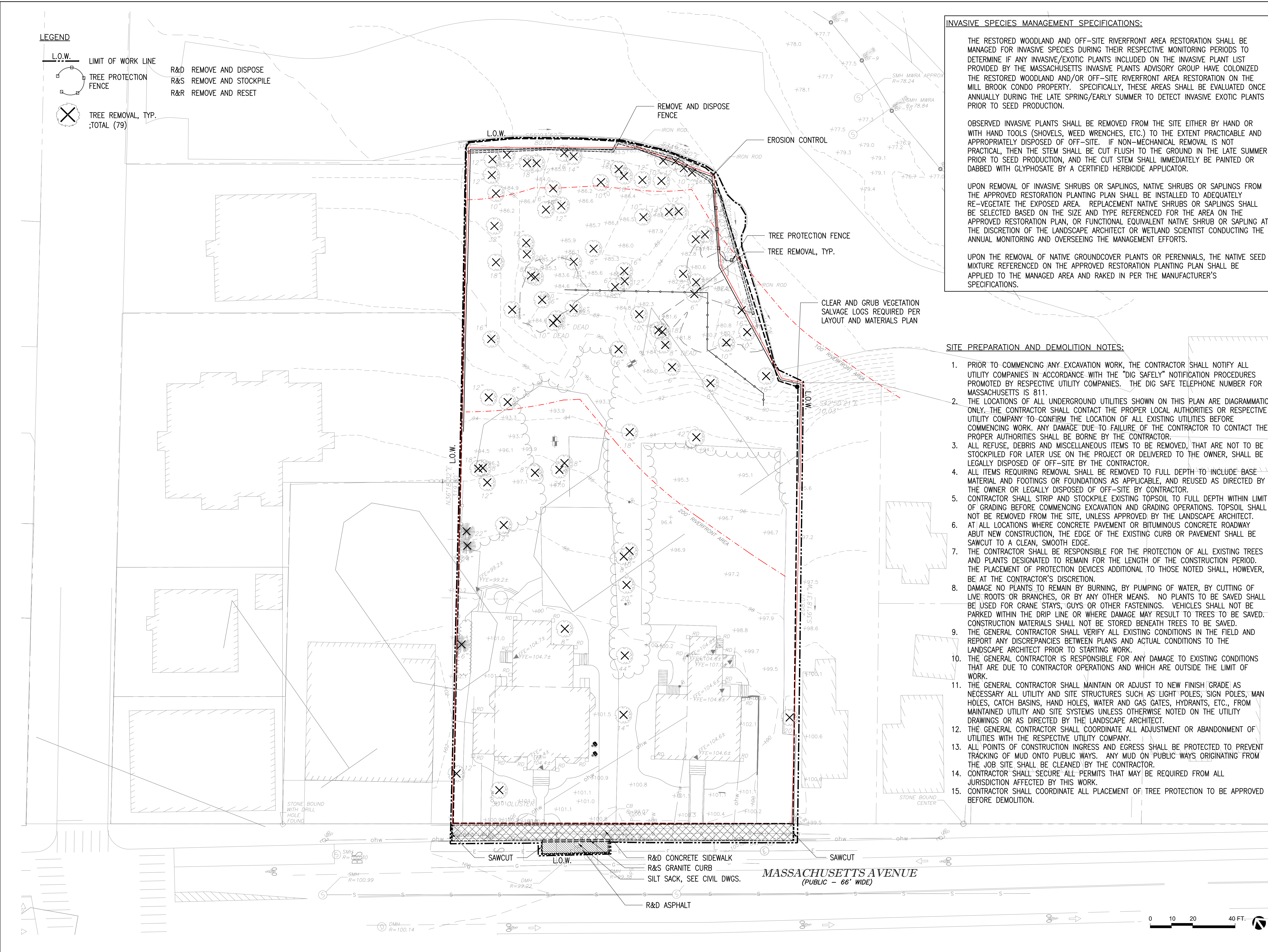
UPON THE REMOVAL OF NATIVE GROUNDCOVER PLANTS OR PERENNIALS, THE NATIVE SEED MIXTURE REFERENCED ON THE APPROVED RESTORATION PLANTING PLAN SHALL BE APPLIED TO THE MANAGED AREA AND RAKED IN PER THE MANUFACTURER'S SPECIFICATIONS.

SITE PREPARATION AND DEMOLITION NOTES:

1. PRIOR TO COMMENCING ANY EXCAVATION WORK, THE CONTRACTOR SHALL NOTIFY ALL UTILITY COMPANIES IN ACCORDANCE WITH THE "DIG SAFELY" NOTIFICATION PROCEDURES PROMOTED BY RESPECTIVE UTILITY COMPANIES. THE DIG SAFE TELEPHONE NUMBER FOR MASSACHUSETTS IS 811.
2. THE LOCATIONS OF ALL UNDERGROUND UTILITIES SHOWN ON THIS PLAN ARE DIAGRAMMATIC ONLY. THE CONTRACTOR SHALL CONTACT THE PROPER LOCAL AUTHORITIES OR RESPECTIVE UTILITY COMPANY TO CONFIRM THE LOCATION OF ALL EXISTING UTILITIES BEFORE COMMENCING WORK. ANY DAMAGE DUE TO FAILURE OF THE CONTRACTOR TO CONTACT THE PROPER AUTHORITIES SHALL BE BORNE BY THE CONTRACTOR.
3. ALL REFUSE, DEBRIS AND MISCELLANEOUS ITEMS TO BE REMOVED, THAT ARE NOT TO BE STOCKPILED FOR LATER USE ON THE PROJECT OR DELIVERED TO THE OWNER, SHALL BE LEGALLY DISPOSED OF OFF-SITE BY THE CONTRACTOR.
4. ALL ITEMS REQUIRING REMOVAL SHALL BE REMOVED TO FULL DEPTH TO INCLUDE BASE MATERIAL AND FOOTINGS OR FOUNDATIONS AS APPLICABLE, AND REUSED AS DIRECTED BY THE OWNER OR LEGALLY DISPOSED OF OFF-SITE BY CONTRACTOR.
5. CONTRACTOR SHALL STRIP AND STOCKPILE EXISTING TOPSOIL TO FULL DEPTH WITHIN LIMIT OF GRADING BEFORE COMMENCING EXCAVATION AND GRADING OPERATIONS. TOPSOIL SHALL NOT BE REMOVED FROM THE SITE, UNLESS APPROVED BY THE LANDSCAPE ARCHITECT.
6. AT ALL LOCATIONS WHERE CONCRETE PAVEMENT OR BITUMINOUS CONCRETE ROADWAY ABUT NEW CONSTRUCTION, THE EDGE OF THE EXISTING CURB OR PAVEMENT SHALL BE SAWCUT TO A CLEAN, SMOOTH EDGE.
7. THE CONTRACTOR SHALL BE RESPONSIBLE FOR THE PROTECTION OF ALL EXISTING TREES AND PLANTS DESIGNATED TO REMAIN FOR THE LENGTH OF THE CONSTRUCTION PERIOD. THE PLACEMENT OF PROTECTION DEVICES ADDITIONAL TO THOSE NOTED SHALL, HOWEVER, BE AT THE CONTRACTOR'S DISCRETION.
8. DAMAGE TO PLANTS TO REMAIN BY BURNING, BY PUMPING OF WATER, BY CUTTING OF LIVE ROOTS OR BRANCHES, OR BY ANY OTHER MEANS. NO PLANTS TO BE SAVED SHALL BE USED FOR CRANE STAYS, GUYS OR OTHER FASTENINGS. VEHICLES SHALL NOT BE PARKED WITHIN THE DRIP LINE OR WHERE DAMAGE MAY RESULT TO TREES TO BE SAVED. CONSTRUCTION MATERIALS SHALL NOT BE STORED BENEATH TREES TO BE SAVED.
9. THE GENERAL CONTRACTOR SHALL VERIFY ALL EXISTING CONDITIONS IN THE FIELD AND REPORT ANY DISCREPANCIES BETWEEN PLANS AND ACTUAL CONDITIONS TO THE LANDSCAPE ARCHITECT PRIOR TO STARTING WORK.
10. THE GENERAL CONTRACTOR IS RESPONSIBLE FOR ANY DAMAGE TO EXISTING CONDITIONS THAT ARE DUE TO CONTRACTOR OPERATIONS AND WHICH ARE OUTSIDE THE LIMIT OF WORK.
11. THE GENERAL CONTRACTOR SHALL MAINTAIN OR ADJUST TO NEW FINISH GRADE AS NECESSARY ALL UTILITY AND SITE STRUCTURES SUCH AS LIGHT POLES, SIGN POLES, MAN HOLES, CATCH BASINS, HAND HOLES, WATER AND GAS GATES, HYDRANTS, ETC., FROM MAINTAINED UTILITY AND SITE SYSTEMS UNLESS OTHERWISE NOTED ON THE UTILITY DRAWINGS OR AS DIRECTED BY THE LANDSCAPE ARCHITECT.
12. THE GENERAL CONTRACTOR SHALL COORDINATE ALL ADJUSTMENT OR ABANDONMENT OF UTILITIES WITH THE RESPECTIVE UTILITY COMPANY.
13. ALL POINTS OF CONSTRUCTION INGRESS AND EGRESS SHALL BE PROTECTED TO PREVENT TRACKING OF MUD ONTO PUBLIC WAYS. ANY MUD ON PUBLIC WAYS ORIGINATING FROM THE JOB SITE SHALL BE CLEANED BY THE CONTRACTOR.
14. CONTRACTOR SHALL SECURE ALL PERMITS THAT MAY BE REQUIRED FROM ALL JURISDICTION AFFECTED BY THIS WORK.
15. CONTRACTOR SHALL COORDINATE ALL PLACEMENT OF TREE PROTECTION TO BE APPROVED BEFORE DEMOLITION.

LEGEND

- L.O.W. LIMIT OF WORK LINE
- TREE PROTECTION FENCE
- TREE REMOVAL, TYP. ; TOTAL (79)
- R&D REMOVE AND DISPOSE
- R&S REMOVE AND STOCKPILE
- R&R REMOVE AND RESET



NO.	REVISION	DATE
3	REVISION #3	04.13.2023
2	REVISION #2	02.17.2023
1	REVISION #1	01.23.2023

kzla
Kylie Zick Landscape Architecture, Inc.
36 Bronnfield Street Suite 202
Boston, MA 02108
617 451-1018 Tel
www.kyiezick.com

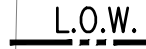









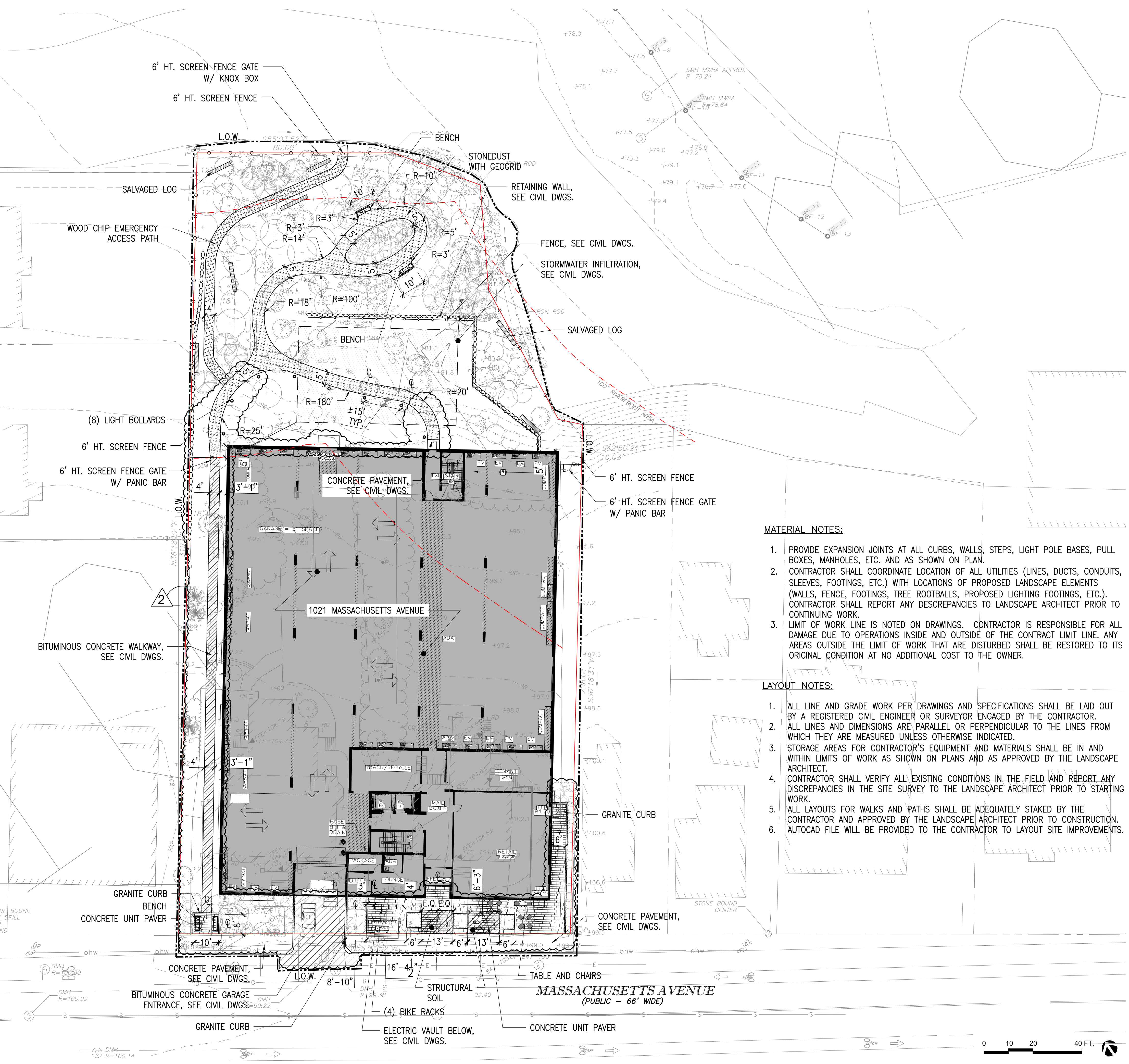
DRAFT CONSTRUCTION
DOCUMENT SET

Job Number:
Project: 1021-1025 MASSACHUSETTS AVENUE
Drawn By: YL Checked By: KZ
Date: SEPTEMBER 8, 2022
Scale: 1"=20'-0"
Drawing Title:

SITE PREPARATION PLAN

LEGEND

-  L.O.W. LIMIT OF WORK LINE
-  STONEDUST WITH GEOGRID
-  WOOD CHIP EMERGENCY ACCESS PATH
-  CONCRETE UNIT PAVER
-  BITUMINOUS CONCRETE WALKWAY, SEE CIVIL DWGS.
-  BITUMINOUS CONCRETE GARAGE ENTRANCE, SEE CIVIL DWGS.
-  CONCRETE PAVEMENT, SEE CIVIL DWGS.
-  SALVAGED LOG



MATERIAL NOTES:

1. PROVIDE EXPANSION JOINTS AT ALL CURBS, WALLS, STEPS, LIGHT POLE BASES, PULL BOXES, MANHOLES, ETC. AND AS SHOWN ON PLAN.
2. CONTRACTOR SHALL COORDINATE LOCATION OF ALL UTILITIES (LINES, DUCTS, CONDUITS, SLEEVES, FOOTINGS, ETC.) WITH LOCATIONS OF PROPOSED LANDSCAPE ELEMENTS (WALLS, FENCE, FOOTINGS, TREE ROOTBALLS, PROPOSED LIGHTING FOOTINGS, ETC.). CONTRACTOR SHALL REPORT ANY DISCREPANCIES TO LANDSCAPE ARCHITECT PRIOR TO CONTINUING WORK.
3. LIMIT OF WORK LINE IS NOTED ON DRAWINGS. CONTRACTOR IS RESPONSIBLE FOR ALL DAMAGE DUE TO OPERATIONS INSIDE AND OUTSIDE OF THE CONTRACT LIMIT LINE. ANY AREAS OUTSIDE THE LIMIT OF WORK THAT ARE DISTURBED SHALL BE RESTORED TO ITS ORIGINAL CONDITION AT NO ADDITIONAL COST TO THE OWNER.

LAYOUT NOTES:

1. ALL LINE AND GRADE WORK PER DRAWINGS AND SPECIFICATIONS SHALL BE LAID OUT BY A REGISTERED CIVIL ENGINEER OR SURVEYOR ENGAGED BY THE CONTRACTOR.
2. ALL LINES AND DIMENSIONS ARE PARALLEL OR PERPENDICULAR TO THE LINES FROM WHICH THEY ARE MEASURED UNLESS OTHERWISE INDICATED.
3. STORAGE AREAS FOR CONTRACTOR'S EQUIPMENT AND MATERIALS SHALL BE IN AND WITHIN LIMITS OF WORK AS SHOWN ON PLANS AND AS APPROVED BY THE LANDSCAPE ARCHITECT.
4. CONTRACTOR SHALL VERIFY ALL EXISTING CONDITIONS IN THE FIELD AND REPORT ANY DISCREPANCIES IN THE SITE SURVEY TO THE LANDSCAPE ARCHITECT PRIOR TO STARTING WORK.
5. ALL LAYOUTS FOR WALKS AND PATHS SHALL BE ADEQUATELY STAKED BY THE CONTRACTOR AND APPROVED BY THE LANDSCAPE ARCHITECT PRIOR TO CONSTRUCTION.
6. AUTOCAD FILE WILL BE PROVIDED TO THE CONTRACTOR TO LAYOUT SITE IMPROVEMENTS.

NO.	REVISION	DATE
3	REVISION #3	04.13.2023
2	REVISION #2	02.17.2023
1	REVISION #1	01.23.2023

kzla
Kylie Zick Landscape Architecture, Inc.
36 Bronnfield Street Suite 202 617 451-1018 Tel
Boston, MA 02108 www.kyiezick.com



DRAFT CONSTRUCTION DOCUMENT SET

Job Number:
Project: 1021-1025 MASSACHUSETTS AVENUE
Drawn By: YL Checked By: KZ
Date: SEPTEMBER 8, 2022
Scale: 1"=20'-0"
Drawing Title:

LAYOUT AND MATERIAL PLAN

LEGEND

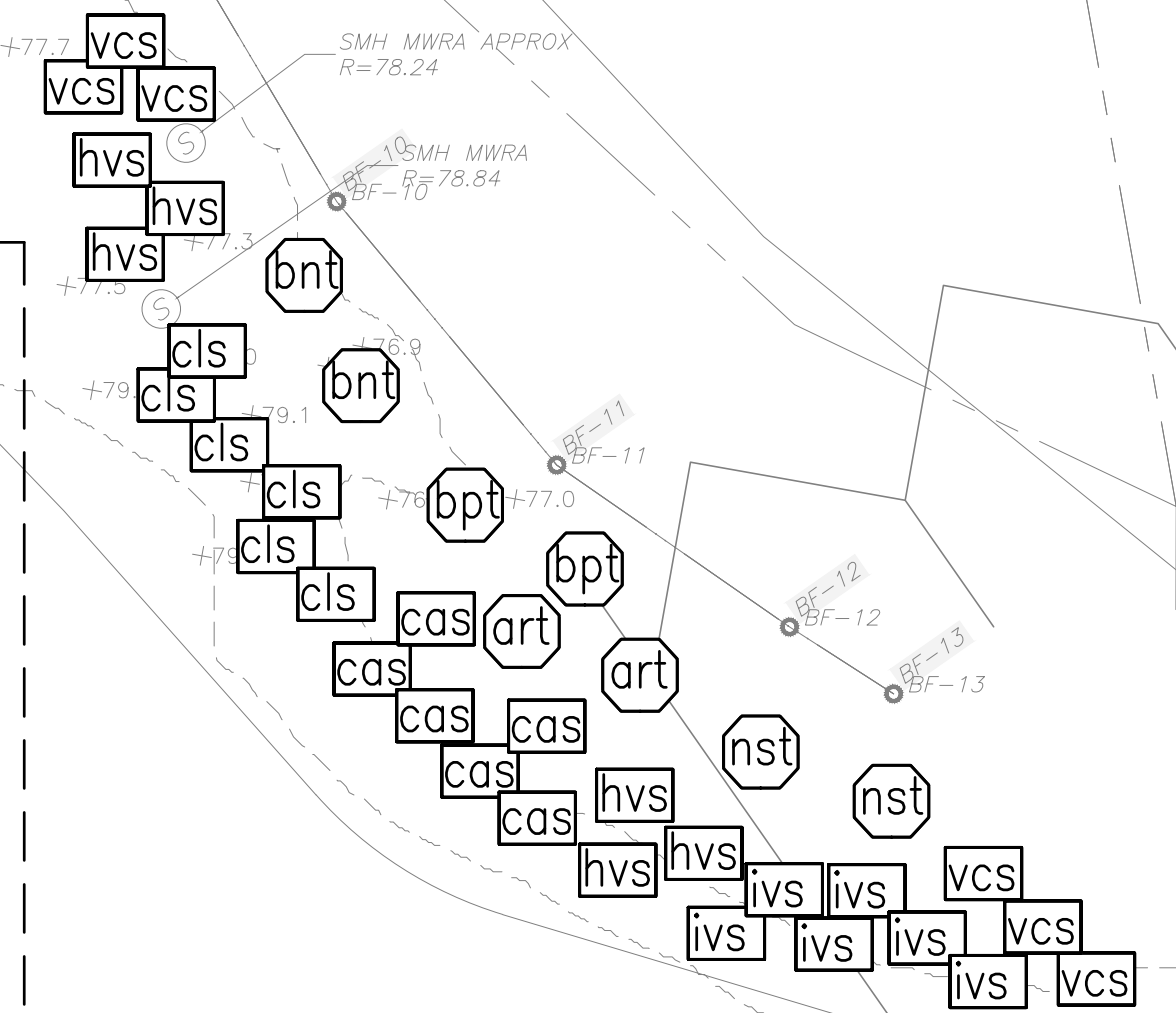
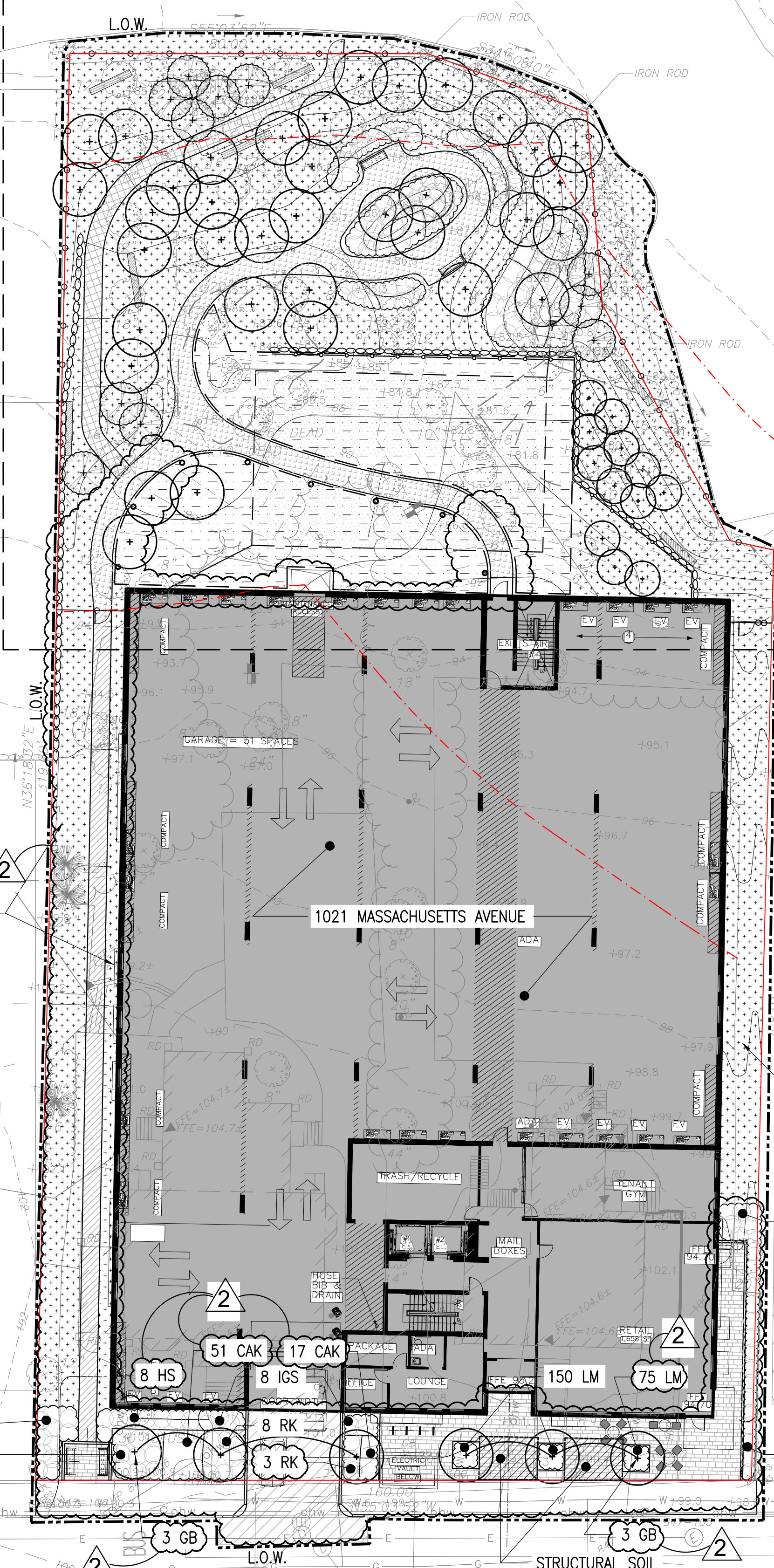
- L.O.W. LIMIT OF WORK LINE
- SHRUBS/PERENNIALS
- MEADOW SEED MIX
- NEW ENGLAND SHOWY WILDFLOWER MIX
- UNDERSTORY SEED MIX
- NEW ENGLAND ROADSIDE MATRIX UPLAND SEED MIX
- DECIDUOUS TREE, TYP.
- EVERGREEN SHRUBS
- EVERGREEN TREE, TYP.

NOTE: TOPSOIL FOR LANDSCAPE SHALL BE LOAMY SANDY WITH 5-8% ORGANIC CONTENT AND Ph 6.0-7.3

PLANTING NOTES:

1. IF DISCREPANCIES EXIST BETWEEN THE NUMBER OF PLANTS DRAWN ON THE PLANTING PLAN AND THE NUMBER OF PLANTS IN THE PLANT SCHEDULE, THE PLANTING PLAN SHALL GOVERN.
2. ALL NEW PLANT MATERIAL SHALL CONFORM TO THE MINIMUM GUIDELINES ESTABLISHED FOR NURSERY STOCK PUBLISHED BY THE AMERICAN ASSOCIATION OF NURSERYMEN, INC. IN ADDITION, ALL NEW PLANT MATERIAL FOR THE PROJECT SHALL BE OF SPECIMEN QUALITY.
3. ALL NEW PLANTS TO BE BALLED AND BURLAPPED OR CONTAINER-GROWN, UNLESS OTHERWISE NOTED ON THE PLANT SCHEDULE.
4. THE CONTRACTOR SHALL SUPPLY ALL NEW PLANT MATERIAL IN QUANTITIES SUFFICIENT TO COMPLETE THE PLANTING SHOWN ON THE DRAWINGS.
5. ANY PROPOSED SUBSTITUTIONS OF PLANT SPECIES SHALL BE MADE WITH PLANTS OF EQUIVALENT OVERALL FORM, HEIGHT, BRANCHING HABIT, FLOWER, LEAF, COLOR, FRUIT AND CULTURE, AND SHALL BE NATIVE PLANTS ON THE OLMSTED PLANTING LIST. ALL SUBSTITUTIONS SHALL REQUIRE WRITTEN APPROVAL OF THE LANDSCAPE ARCHITECT.
6. ALL NEW PLANTS SHALL BE TAGGED AND APPROVED BY THE LANDSCAPE ARCHITECT AT THE NURSERY PRIOR TO DIGGING OR DELIVERY TO THE SITE.
7. CONTRACTOR SHALL LOCATE AND VERIFY ALL EXISTING UTILITY LINES PRIOR TO PLANTING AND SHALL REPORT ANY CONFLICTS TO THE LANDSCAPE ARCHITECT.
8. STAKE LOCATION OF ALL PROPOSED PLANTING FOR APPROVAL BY LANDSCAPE ARCHITECT PRIOR TO THE COMMENCEMENT OF PLANTING.
9. TREES SHALL BE SET 3" HIGHER THAN PREVIOUS GRADE. NO TREES SHALL BE PLANTED BEFORE ACCEPTANCE OF ROUGH GRADING.
10. ALL EXISTING TREES TO REMAIN SHALL BE PROPERLY PROTECTED DURING CONSTRUCTION. PROTECTION TECHNIQUES SHALL BE REVIEWED AND APPROVED BY THE LANDSCAPE ARCHITECT. THE PLACEMENT OF PROTECTION DEVICES ADDITIONAL TO THOSE NOTED SHALL, HOWEVER, BE AT THE CONTRACTOR'S DISCRETION.
11. CONTRACTOR SHALL PROVIDE FULL DEPTHS OF LOAM AS NOTED ON DETAILS AND AS SPECIFIED, FOR ALL PLANTING.
12. CONTRACTOR SHALL COORDINATE LOCATION OF ALL UTILITIES (LINES, DUCTS, CONDUITS, SLEEVES, FOOTINGS, ETC.) WITH LOCATIONS OF PROPOSED LANDSCAPE ELEMENTS (WALLS, FENCES, FOOTINGS, TREE ROOTBALLS, PROPOSED LIGHTING FOOTINGS, ETC.). CONTRACTOR SHALL REPORT ANY DISCREPANCIES TO LANDSCAPE ARCHITECT PRIOR TO CONTINUING WORK.
13. IN AREAS WHERE EXISTING PAVEMENTS ARE REMOVED AND ARE PROPOSED AS TURF, THE CONTRACTOR SHALL REMOVE THE PAVEMENT AND BASE, PROVIDE FILL AND 6" TOPSOIL PRIOR TO SEEDING.

REFER TO SHEET L4 FOR ENLARGED PLANTING PLAN



- NATIVE SAPLING TREES**
- art ACER RUBRUM
 - bnt BETULA NIGRA
 - bpt BETULA POPULIFOLIA
 - nst NYSSA SYVATICA
- NATIVE SHRUBS**
- cls CLETHRA ALNIFOLIA
 - cas CORNUS AMOMUM
 - hvs HAMAMELIS VIRGINIANA
 - ivs ILEX VERTICILLATA
 - vcs VACCINIUM CORYMBOSUM

MILL BROOK ENHANCEMENT PLANT SCHEDULE

KEY	QTY.	BOTANICAL NAME	COMMON NAME	SIZE	SPACING	NOTES:
NATIVE SAPLING TREES						
art	2	ACER RUBRUM	RED MAPLE	6' HT.	-	-
bnt	2	BETULA NIGRA	RIVER BIRCH	6' HT.	-	-
bpt	2	BETULA POPULIFOLIA	GRAY BIRCH	6' HT.	-	-
nst	2	NYSSA SYVATICA	TUPELO	6' HT.	-	-
NATIVE SHRUBS						
cls	6	CLETHRA ALNIFOLIA	SWEET PEPPERBUSH	3' HT.	4'-0" O.C.	-
cas	6	CORNUS AMOMUM	SILKY DOGWOOD	3' HT.	4'-0" O.C.	-
hvs	6	HAMAMELIS VIRGINIANA	WITCHHAZEL	3' HT.	4'-0" O.C.	-
ivs	6	ILEX VERTICILLATA	WINTERBERRY HOLLY	3' HT.	4'-0" O.C.	-
vcs	6	VACCINIUM CORYMBOSUM	HIGHBUSH BLUEBERRY	3' HT.	4'-0" O.C.	-

UNDERSTORY SEED MIX
NEW ENGLAND ROADSIDE
MATRIX UPLAND SEED MIX

UNDERSTORY SEED MIX
NEW ENGLAND ROADSIDE
MATRIX UPLAND SEED MIX

3	REVISION #3	04.13.2023
2	REVISION #2	02.17.2023
1	REVISION #1	01.23.2023

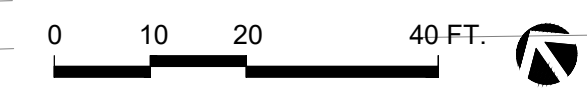
kzla
Kylie Zick Landscape Architecture, Inc.
36 Bromfield Street Suite 202 Boston, MA 02108 617 451-1018 Tel www.kyiezick.com



DRAFT CONSTRUCTION DOCUMENT SET

Job Number:
Project: 1021-1025 MASSACHUSETTS AVENUE
Drawn By: YL Checked By: KZ
Date: SEPTEMBER 8, 2022
Scale: 1"=20'-0"
Drawing Title:

PLANTING PLAN



1021-1025
MASSACHUSETTS
AVENUE

ARLINGTON, MASSACHUSETTS
MAJ INVESTMENT, LLC

LEGEND

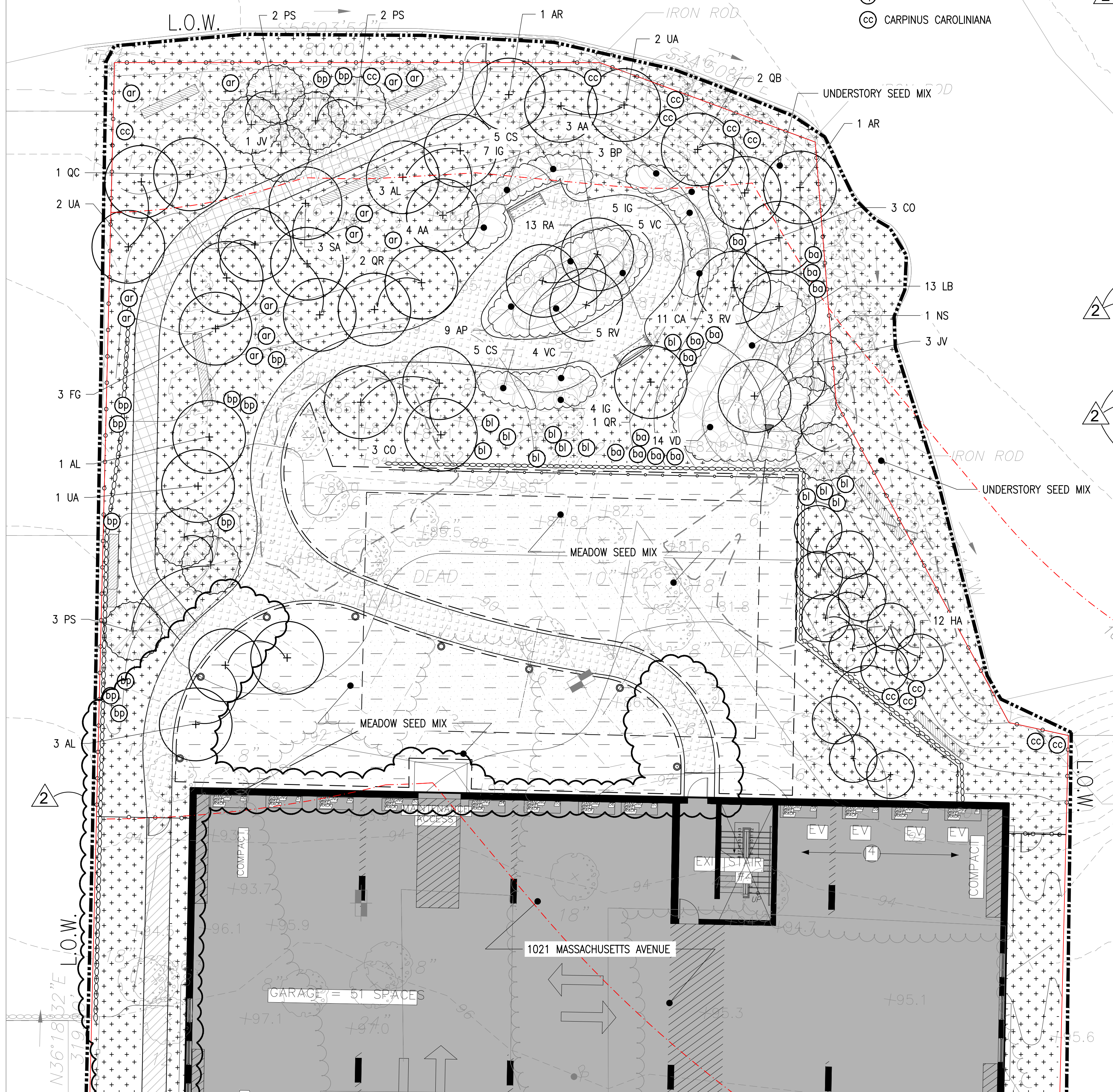
- L.O.W. LIMIT OF WORK LINE
- SHRUBS/PERENNIALS
- DECIDUOUS TREE, TYP.
- EVERGREEN TREE, TYP.
- MEADOW SEED MIX
- NEW ENGLAND SHOWY WILDFLOWER MIX
- UNDERSTORY SEED MIX
- NEW ENGLAND ROADSIDE MATRIX UPLAND SEED MIX

TREE SEEDLINGS

- AR ACER RUBRUM
- BA BETULA ALLEGANIENSIS
- BL BETULA LENTA
- BP BETULA POPULIFOLIA
- CC CARPINUS CAROLINIANA

PLANT SCHEDULE

KEY	QTY.	BOTANICAL NAME	COMMON NAME	SIZE	SPACING	NOTES:
DECIDUOUS TREES						
AR	2	ACER RUBRUM	RED MAPLE	2" CAL.	-	SPRING DIG ONLY
AL	7	AMELANCHIER CANADENSIS L. MEDIK.	SHADBLow SERVICEBERRY	12" HT.	-	MULTI-STEM
BP	3	BETULA PAPIRIFERA	PAPER BIRCH	12" HT.	-	MULTI-STEM
CO	6	CARYA OVATA	SHAGBARK HICKORY	1" CAL.	-	-
FG	3	FAGUS GRANDIFLORA	AMERICAN BEECH	1" CAL.	-	SPRING DIG ONLY
GB	6	GINKGO BILOBA 'PRINCETON SENTRY'	PRINCETON SENTRY GINKGO	3" CAL.	-	-
HA	12	HAMAMELIS X INTERMEDIA 'ARNOLD PROMISE'	WITCHHAZEL	8" B&B	-	CLUMP FORM
NS	1	NYSSA SYLVATICA	SOURGUM	2" CAL.	-	SPRING DIG ONLY
QB	2	QUERCUS BICOLOR	SWAMP WHITE OAK	2" CAL.	-	SPRING DIG ONLY
QC	1	QUERCUS COCCINEA	SCARLET OAK	2" CAL.	-	SPRING DIG ONLY
QR	3	QUERCUS RUBRA	RED OAK	2" CAL.	-	SPRING DIG ONLY
SA	3	SASSAFRAS ALBIDUM	SASSAFRAS	1" CAL.	-	-
UA	5	ULMUS AMERICANA 'PRINCETON'	PRINCETON AMERICAN ELM	2" CAL.	-	SPRING DIG ONLY
TREE SEEDLINGS						
ar	12	ACER RUBRUM	RED MAPLE	4" HT.	-	-
ba	12	BETULA ALLEGANIENSIS	YELLOW BIRCH	4" HT.	-	-
bl	12	BETULA LENTA	SWEET BIRCH	4" HT.	-	-
bp	12	BETULA POPULIFOLIA	GRAY BIRCH	4" HT.	-	-
cc	12	CARPINUS CAROLINIANA	AMERICAN HORNBEAM	4" HT.	-	-
EVERGREEN TREES						
JV	4	JUNIPERUS VIRGINIANA	EASTERN RED CEDAR	6" HT.	-	-
PS	7	PINUS STROBUS	EASTERN WHITE PINE	6" HT.	-	-
SHRUBS						
AA	7	ARONIA ARBUTIFOLIA	RED CHOKEBERRY	36" HT.	5'-0" O.C.	-
AP	9	AESCLULUS PARVIFLORA	BOTTLEBRUSH BUCKEYE	36" HT.	4'-0" O.C.	-
CA	11	CLETHRA ALNIFOLIA	SUMMERSWEET	24" HT.	3'-0" O.C.	-
CAK	68	CALAMAGROSTIS X ACUTIFLORA 'KAL FOERSTEER'	FEATHER REED GRASS	24" HT.	1'-6" O.C.	-
CS	10	CORNUS SERICEA	REDTWIG DOGWOOD	36" HT.	4'-0" O.C.	-
HS	8	HIBISCUS SYRIACUS	LIL' KIM ROSE OF SHARON	36" HT.	4'-0" O.C.	-
IG	16	ILEX GLABRA	INKBERRY	3 GAL.	4'-0" O.C.	-
IGS	8	ILEX GLABRA 'SHAMROCK'	SHAMROCK INKBERRY	3 GAL.	4'-0" O.C.	-
LB	13	LINDERA BENZOIN	SPICEBUSH	36" HT.	6'-0" O.C.	-
RA	13	RHUS AROMATICA 'GRO-LOW'	GRO-LOW FRAGRANT SUMAC	24" SPREAD	3'-0" O.C.	-
RK	11	ROSA 'KNOCK OUT'	WHITE KNOCK OUT ROSE	24" HT.	4'-0" O.C.	-
RV	8	ROSA VIRGINIANA	VIRGINIA ROSE	36" HT.	5'-0" O.C.	-
SM	13	SYRINGA MEYERI 'PALIBIN'	DWARF KOREAN LILAC	36" HT.	4'-0" O.C.	-
TM	30	TAXUS X MEDIA 'HICKSII'	HICKS YEW	36" HT.	4'-0" O.C.	-
VC	9	VACCINIUM CORYMBOSUM	HIGHBUSH BLUEBERRY	24" HT.	4'-0" O.C.	-
VD	14	VIBURNUM DENTATUM	ARROWWOOD	36" HT.	5'-0" O.C.	-
GRASS						
LM	225	LIRIOPE MUSCARI	BIG BLUE LILYTURF	PLUGS	8" O.C.	-



NO.	REVISION	DATE
3	REVISION #3	04.13.2023
2	REVISION #2	02.17.2023
1	REVISION #1	01.23.2023

kzla
Kylie Zick Landscape Architecture, Inc.
36 Bronnfield Street Suite 202
Boston, MA 02108
617 451-1018 Tel
www.kyiezick.com

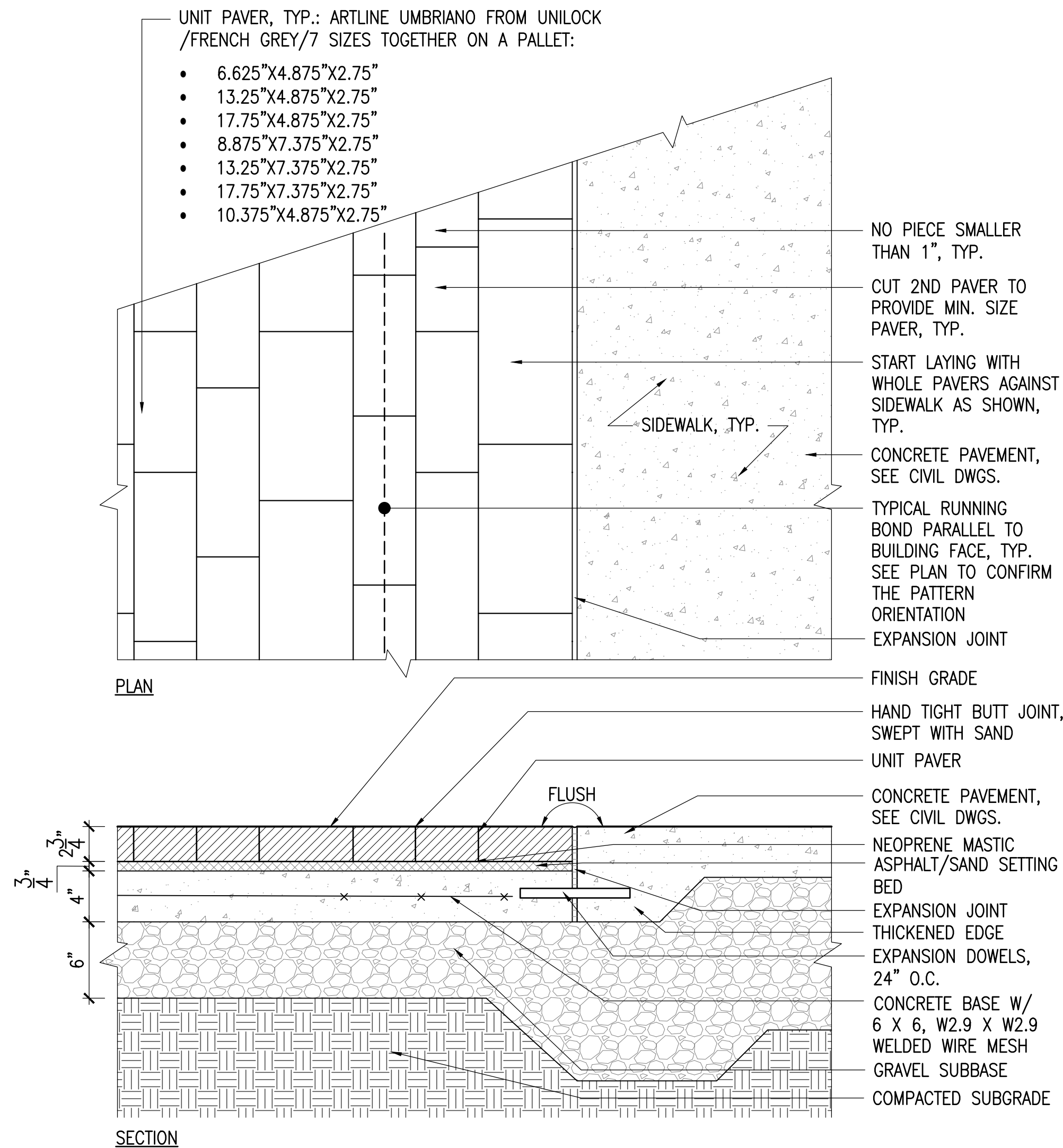


DRAFT CONSTRUCTION
DOCUMENT SET

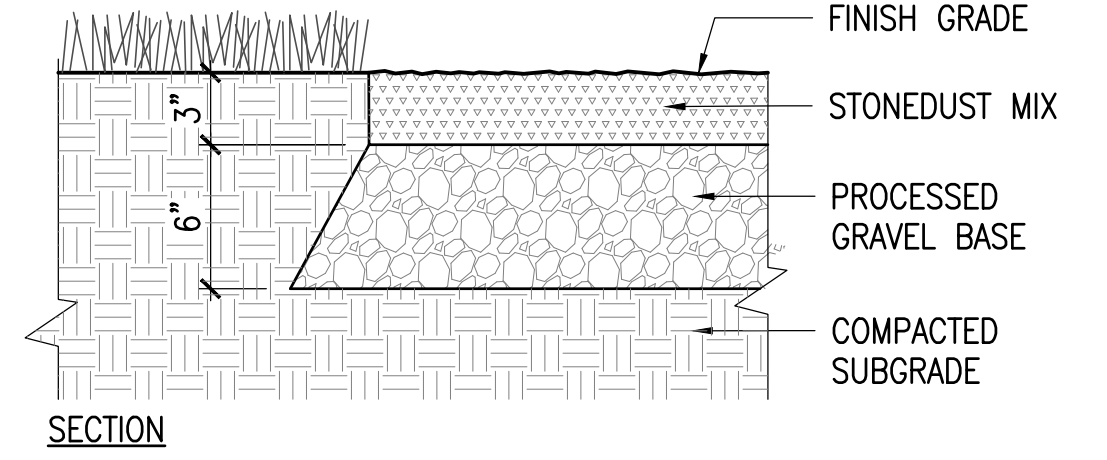
Job Number:
Project: 1021-1025 MASSACHUSETTS AVENUE
Drawn By: YL Checked By: KZ
Date: SEPTEMBER 8, 2022
Scale: 1"=10'-0"
Drawing Title:

ENLARGED PLANTING PLAN

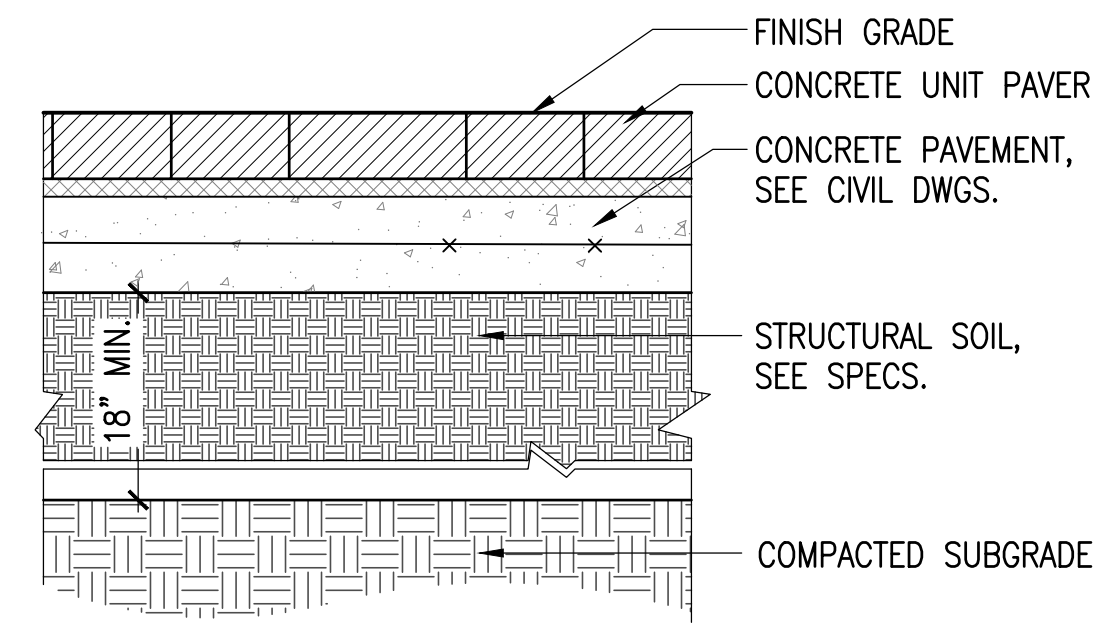




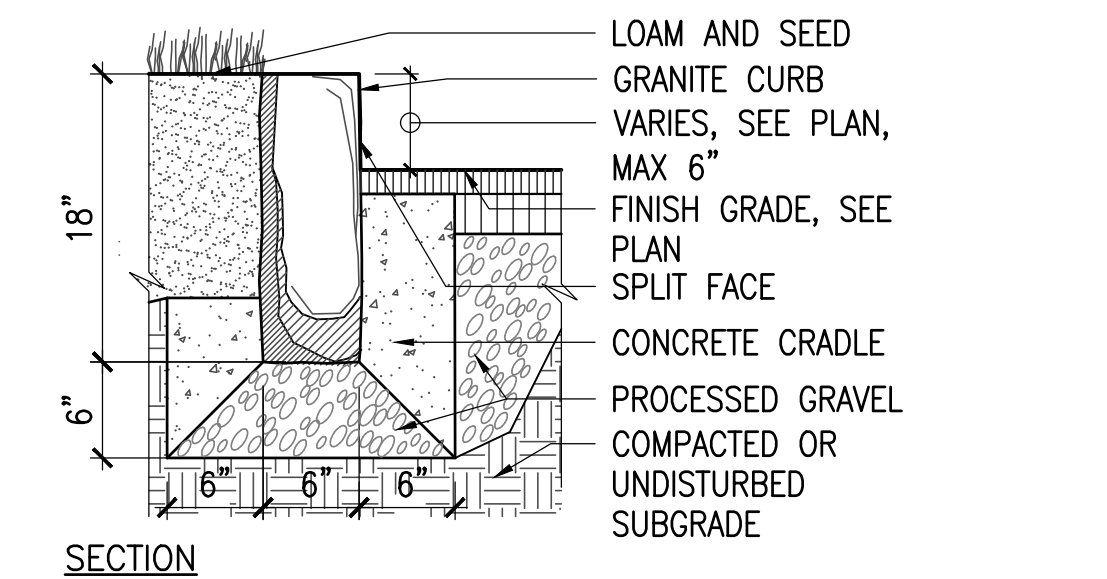
1 CONCRETE UNIT PAVER
SCALE: 1-1/2"=1'-0"



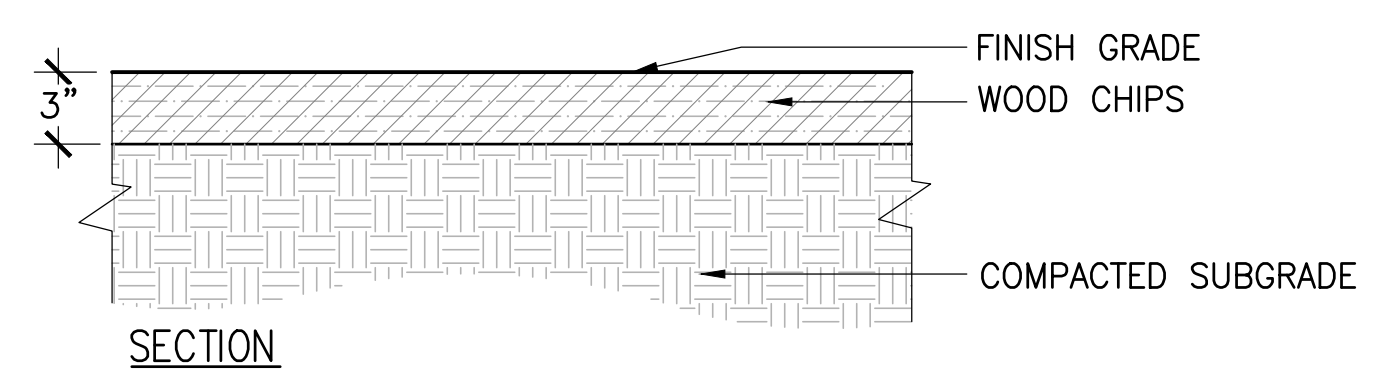
3 STONEDUST PAVEMENT
SCALE: 1-1/2"=1'-0"



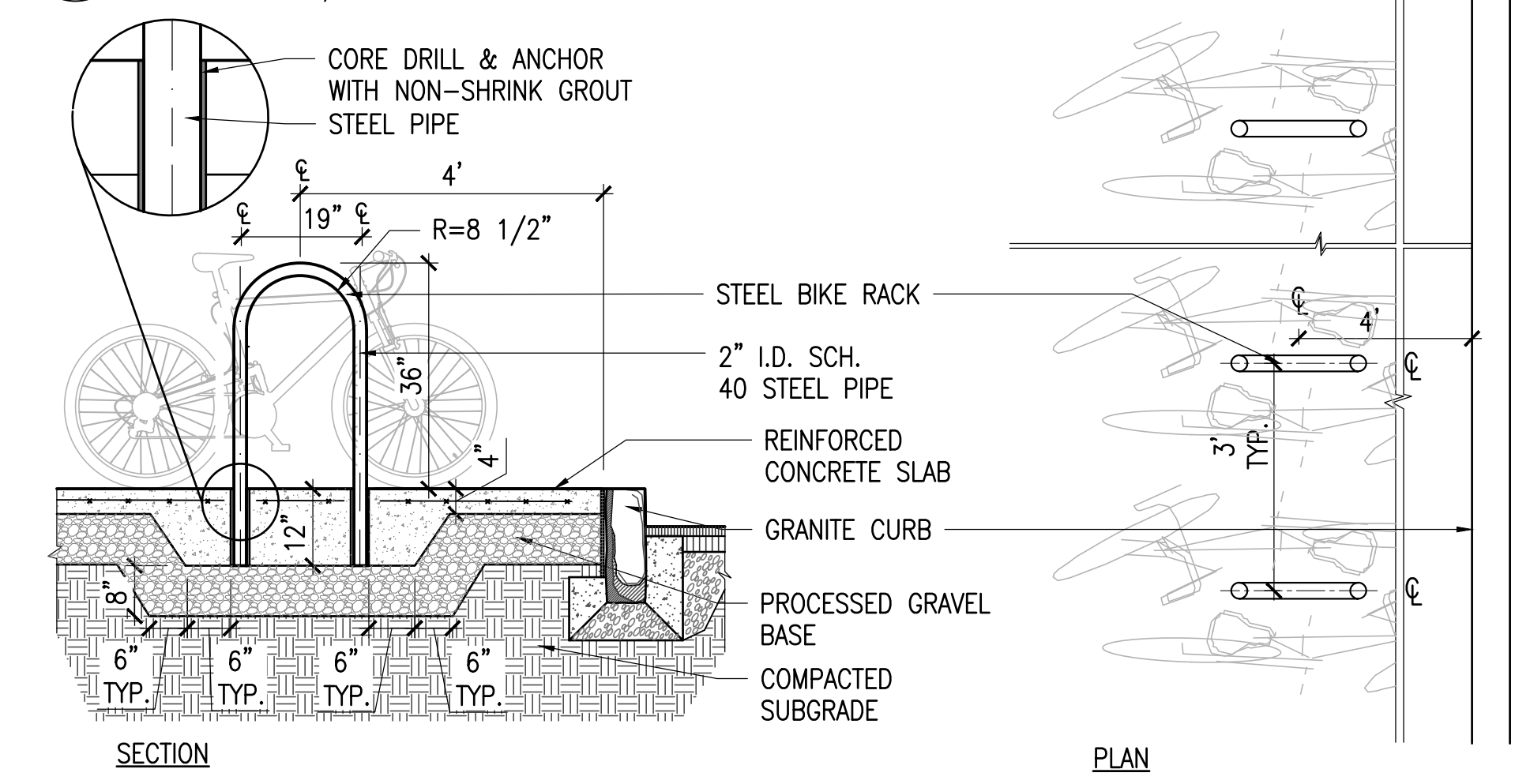
4 STRUCTURAL SOIL
SCALE: 1-1/2"=1'-0"



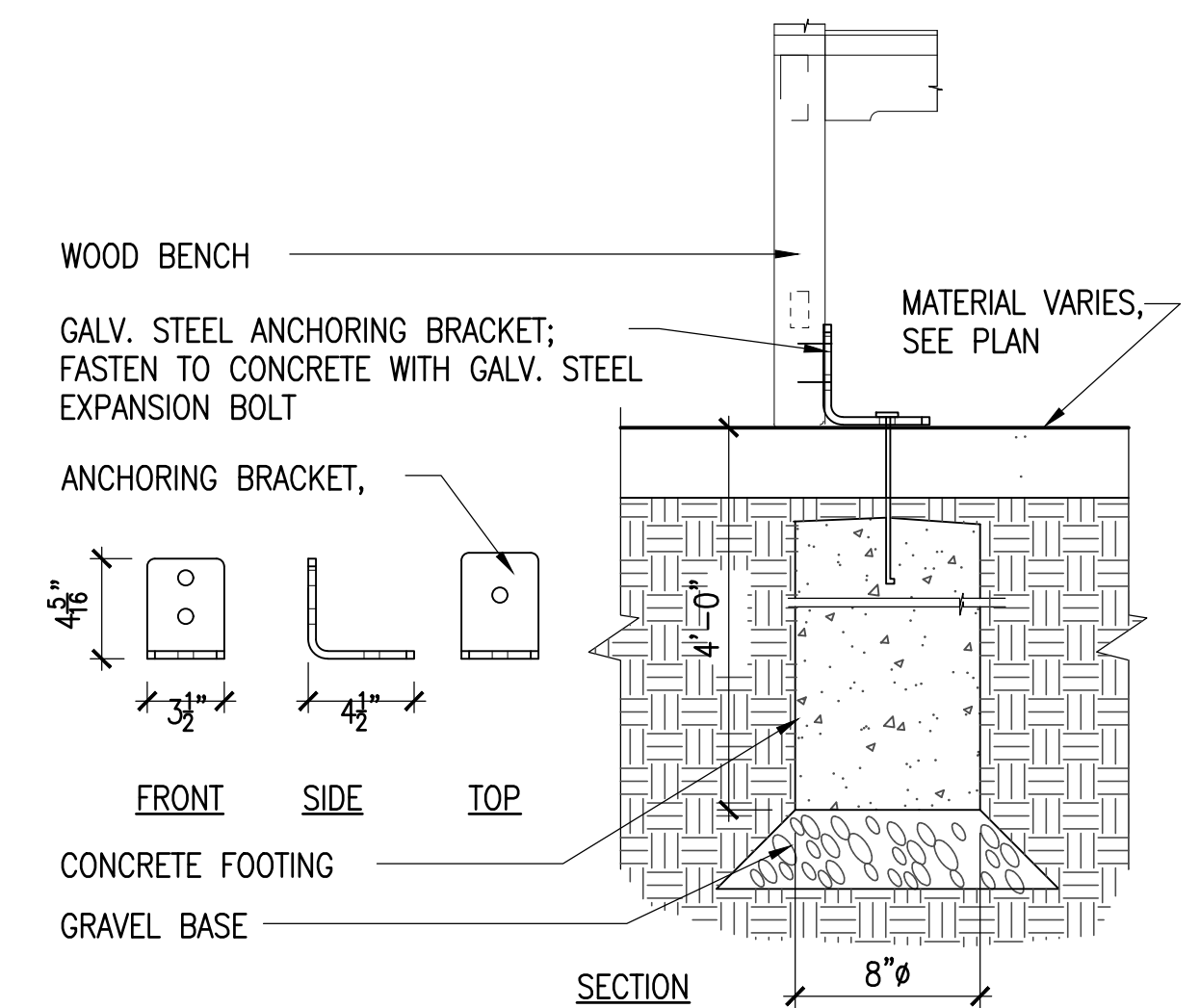
5 GRANITE CURB
SCALE: 1"=1'-0"



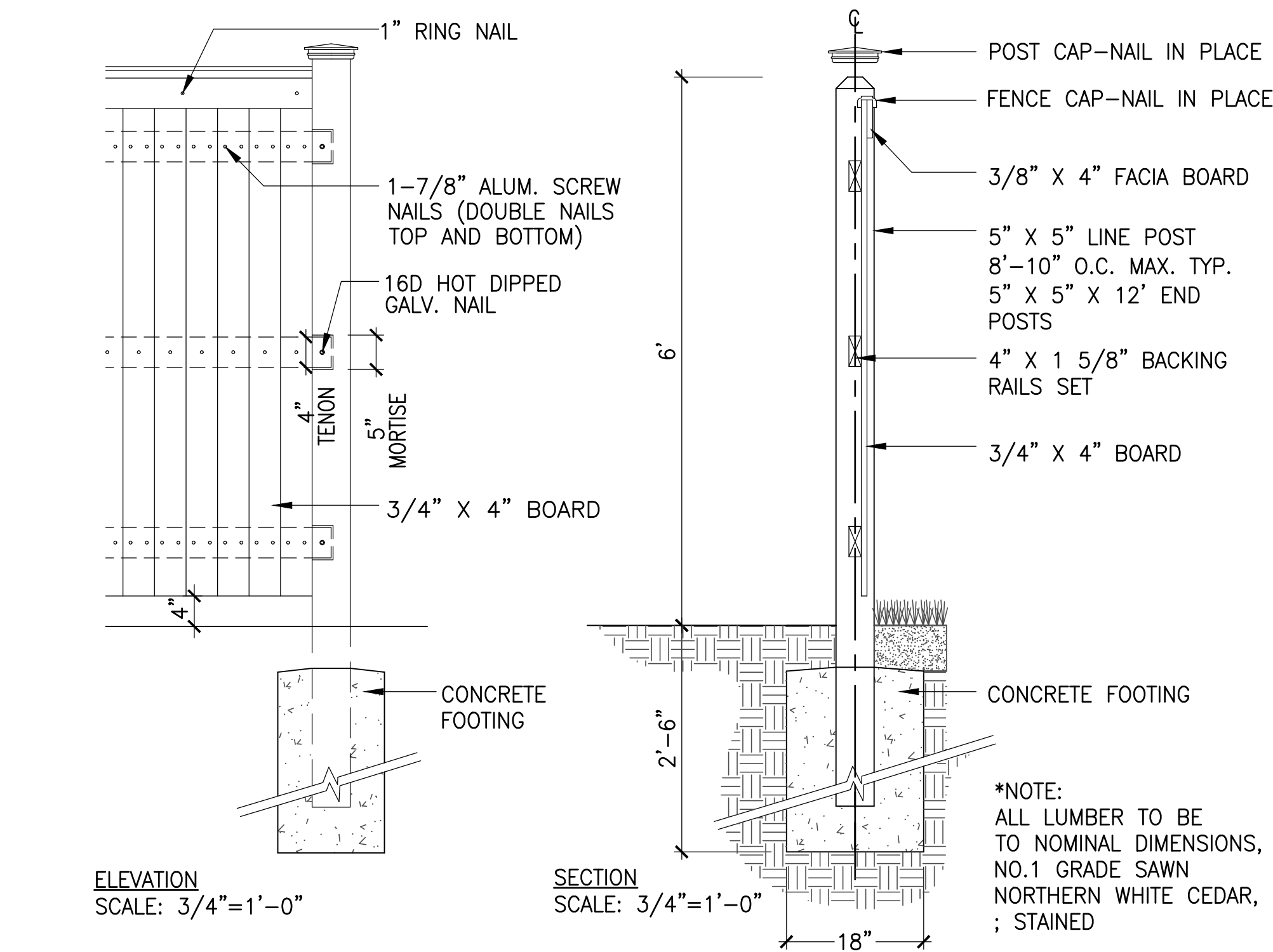
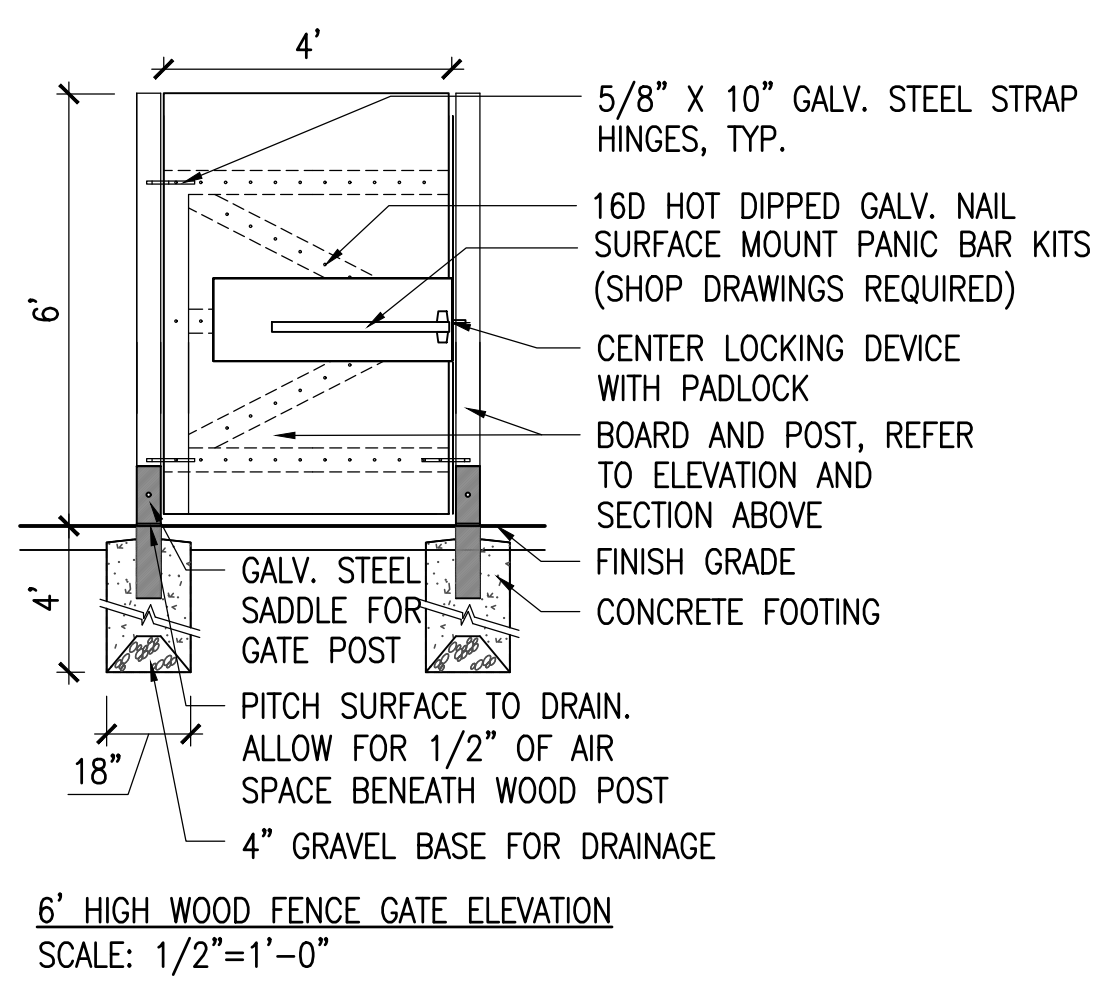
6 WOOD CHIP EMERGENCY ACCESS PATH
SCALE: 1-1/2"=1'-0"



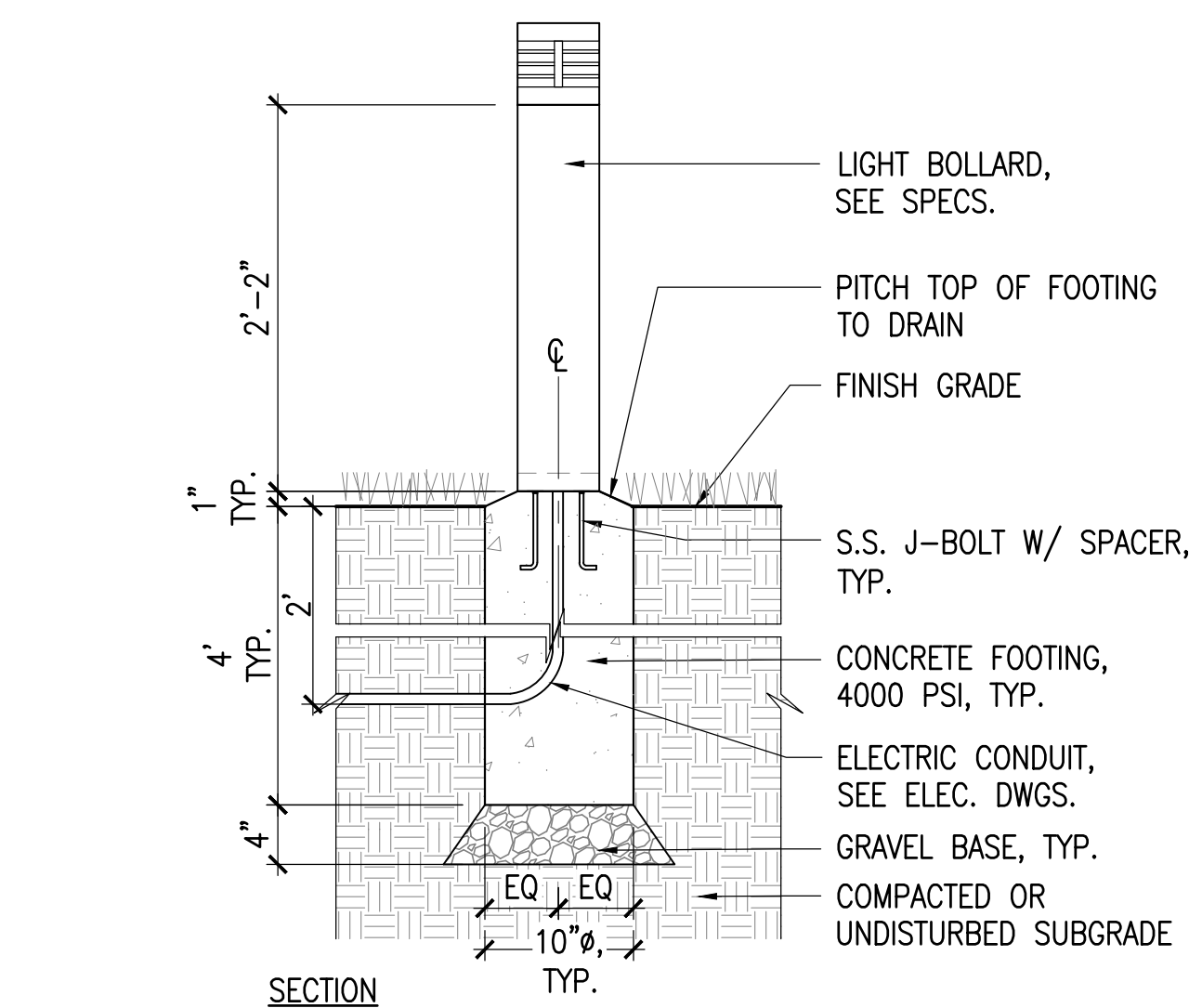
7 BIKE RACK
SCALE: 1/2"=1'-0"



8 WOOD BENCH ANCHORING
SCALE: 1-1/2"=1'-0"



2 6' HT. SCREEN FENCE / GATE - CEDAR
SCALE: AS SHOWN



9 BOLLARD LIGHT FOOTING
SCALE: 1"=1'-0"

NO.	REVISION	DATE
3	REVISION #3	04.13.2023
2	REVISION #2	02.17.2023
1	REVISION #1	01.23.2023

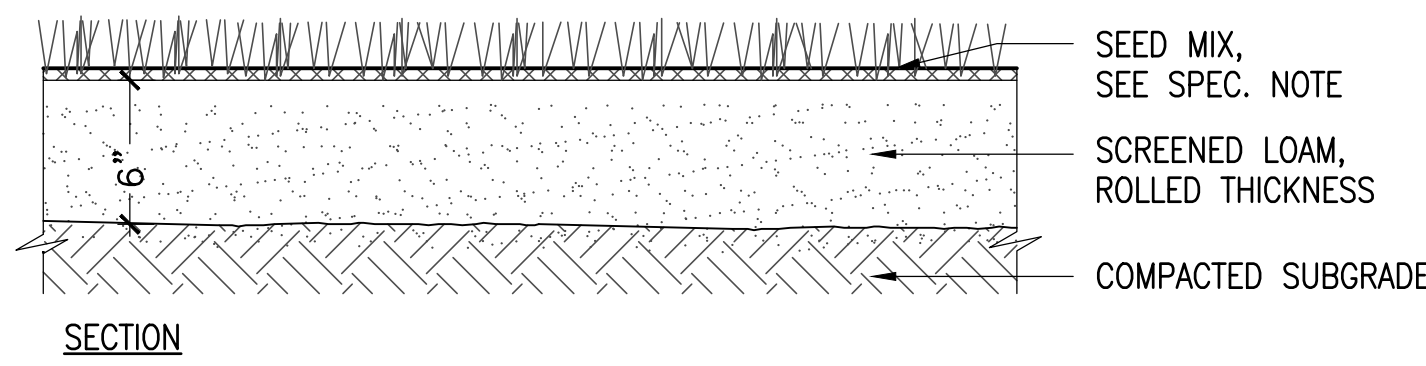
kzla
Kylie Zick Landscape Architecture, Inc.
36 Bronnfield Street Suite 202
Boston, MA 02108
617 451-1018 Tel
www.kyiezick.com



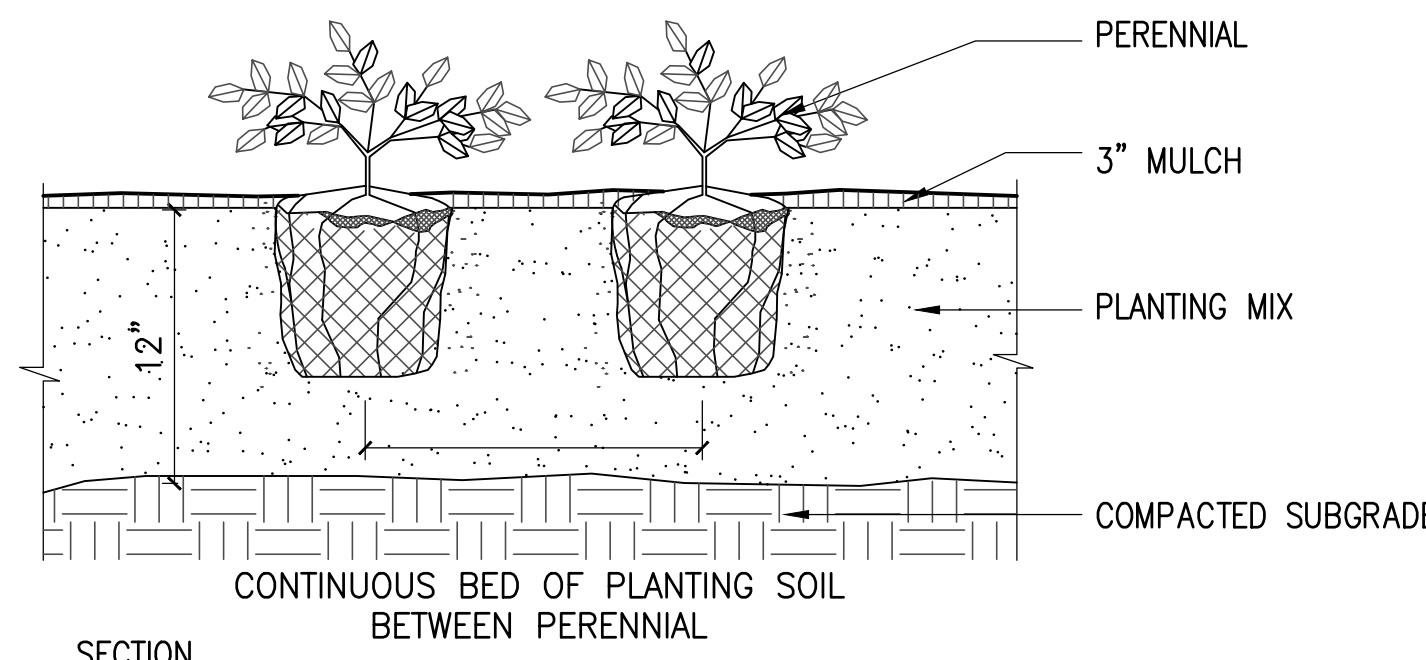
DRAFT CONSTRUCTION DOCUMENT SET

Job Number:
Project: 1021-1025 MASSACHUSETTS AVENUE
Drawn By: YL Checked By: KZ
Date: SEPTEMBER 8, 2022
Scale: 1"=20'-0"
Drawing Title:

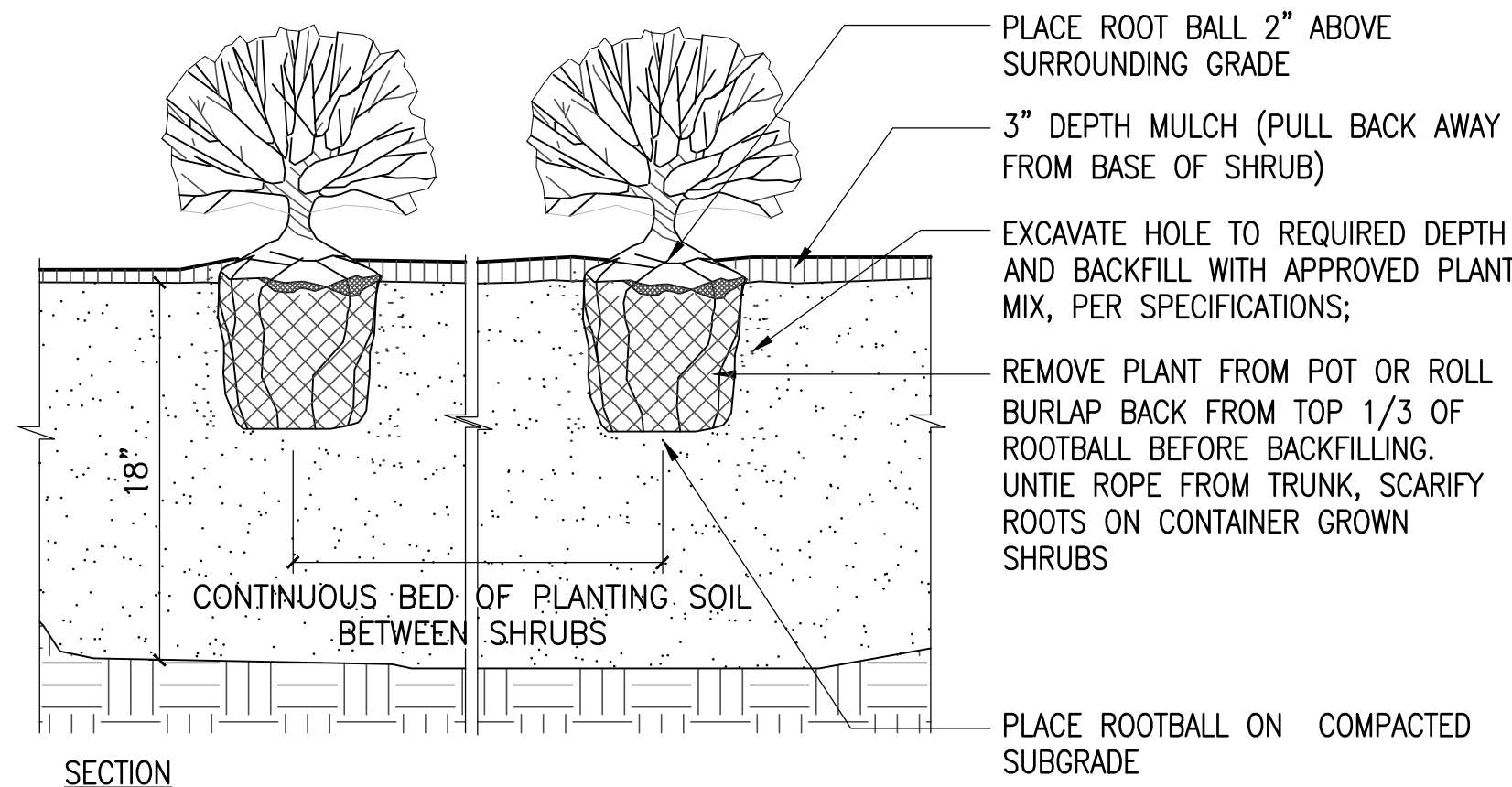
DETAILS



1 LAWN
SCALE: 1'-1/2"=1'-0"



2 PERENNIAL PLANTING
SCALE: 1 1/2"=1'-0"



3 SHRUB PLANTING
SCALE: 1 1/2"=1'-0"

NOTES

1. IF CONTAINER GROWN, SCARIFY SOIL AND ROOTS TO REMOVE CIRCLING ROOTS.

(2) 8' LONG, 3" Ø FIR STAKES; SET STAKES OUTSIDE OF ROOTBALL, LEVEL AND WITH 5'-6" VISIBLE ABOVE GROUND

(2) PIECES OF "ARBOR TIES" SHALL BE LOOPED AROUND TREE TRUNK THROUGH ONE ANOTHER, TWISTED AND SECURED TO STAKE

INSTALL TREE PLUMB

TOP OF ROOTBALL SHALL BEAR SAME RELATIONSHIP TO FINISHED GRADE AS TO PREVIOUS EXISTING GRADE

ROOT FLARE SHALL BE EXPOSED; MULCH SHOULD NOT TOUCH TREE TRUNK

PLACE BALL ON SUBSOIL. REMOVE AND DISCARD BURLAP EXCEPT UNDER BALL. REMOVE AND DISCARD ALL SYNTHETIC SOIL WRAPPING MATERIALS (TREATED BURLAP, NYLON TWINE, WIRE BASKETS, ETC.)

(2) WATERING BAGS AT STAKES
3" BARK MULCH

DECOMPACTED SUBGRADE

EXCAVATE HOLE TO DIAMETER 3X WIDER THAN ROOTBALL. BACKFILL HOLE WITH PLANTING SOIL MIX

SLOW RELEASE FERTILIZER

EXCAVATE SUBSOIL AS REQUIRED TO PLACE ROOTBALL TO PROPER ELEVATION. PLACE ROOTBALL DIRECTLY ON COMPACTED OR UNDISTURBED SUBSOIL.

SECTION ELEVATION

4 DECIDUOUS TREE PLANTING
SCALE: N.T.S.

(3) 2"x3"x4' FIR POST; ATTACH GALVANIZED MALLEABLE STEEL CABLE TO POST AND SECURE BY TWISTING TAUTLY; SET ANGLE OF POST & GUY TO ENTER GROUND AT THE LIMIT OF THE SPREAD OF THE BOTTOM BRANCHES; STAKES SHALL BE OUTSIDE OF TREE PIT.

INSTALL 3 GUYS PER TREE EQUALLY SPACED AROUND ROOTBALL. ATTACH 13 GAUGE GALV. MALLEABLE STEEL GUY WIRE 2/3 HEIGHT OF TREE IN REINFORCED RUBBER HOSE; WITH CABLE CLAMPS. SECURE BY TWISTING TAUTLY.

TREE SHALL BE PLANTED WITH TOP OF ROOTBALL BEARING THE SAME RELATIONSHIP TO FINISHED GRADE AS TO PREVIOUS EXISTING GRADE. TREE SHALL BE PLUMB AFTER SETTLEMENT.

3" BARK MULCH (HOLD MULCH OFF ROOT FLARE)

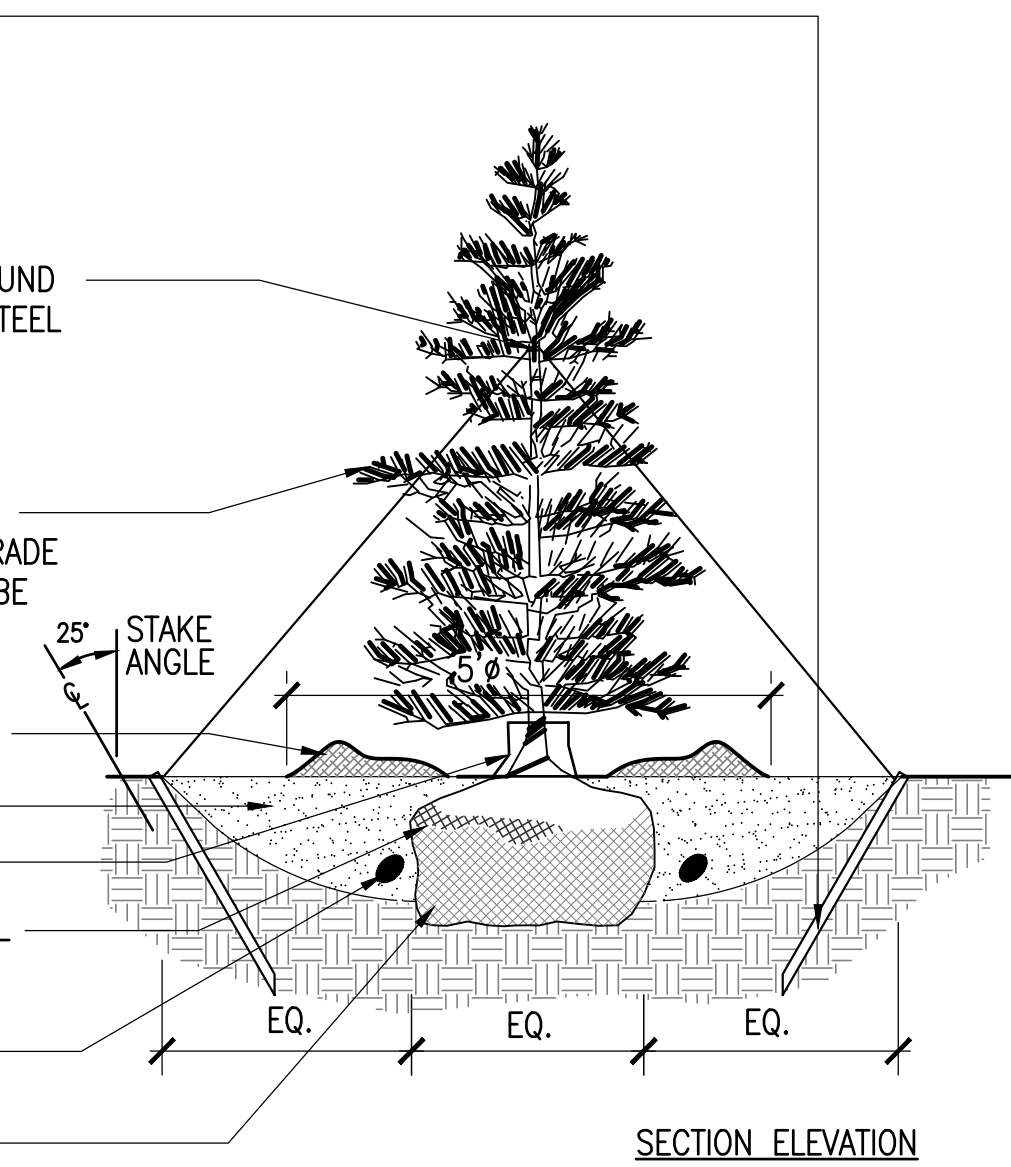
PLANTING SOIL MIX

WATER BAG

ROLL BURLAP BACK FROM TOP 1/3 OF ROOTBALL BEFORE BACKFILLING. UNTIE ROPE FROM TRUNK.

SLOW RELEASE FERTILIZER

FREE DRAINING, UNDISTURBED OR COMPACTED SUBGRADE



5 EVERGREEN TREE PLANTING
SCALE: N.T.S.

NOTES

1. ADD HIGH VISIBILITY FLAGGING TO EACH GUY WIRE FOR PUBLIC SAFETY.

INSTALL 3 GUYS PER TREE EQUALLY SPACED AROUND ROOTBALL. ATTACH 13 GAUGE GALV. MALLEABLE STEEL GUY WIRE 2/3 HEIGHT OF TREE IN REINFORCED RUBBER HOSE; WITH CABLE CLAMPS. SECURE BY TWISTING TAUTLY.

(3) 2"x3"x4' FIR POST; ATTACH GALVANIZED MALLEABLE STEEL CABLE TO POST AND SECURE BY TWISTING TAUTLY; SET ANGLE OF POST & GUY TO ENTER GROUND AT THE LIMIT OF THE SPREAD OF THE BOTTOM BRANCHES; STAKES SHALL BE OUTSIDE OF TREE PIT.

DECIDUOUS TREE W/ (2) STAKES (4/17)

EROSION MATTING AS SPECIFIED

WATERING BAG

TREE SHALL BE PLANTED 3" ABOVE SURROUNDING GRADE. TREE SHALL BE PLUMB AFTER SETTLEMENT.

3" MULCH; PULL MULCH AWAY FROM TREE TRUNK

3" HIGH EARTH SAUCER AROUND TREE PIT

PLANTING LOAM AS SPECIFIED

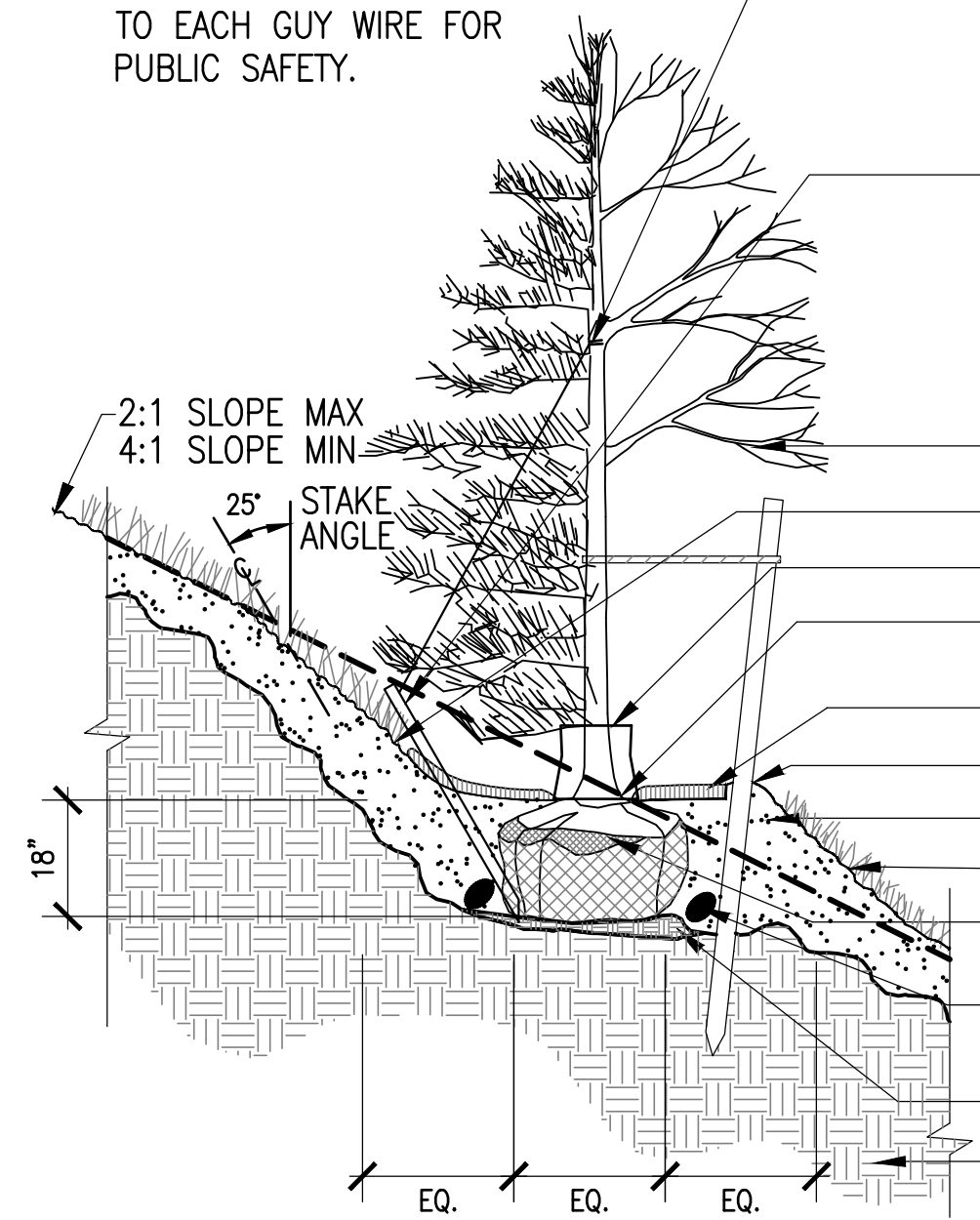
EROSION CONTROL MATTING AS SPECIFIED

ROLL BURLAP BACK FROM TOP 1/3 OF ROOTBALL BEFORE BACKFILLING. REMOVE ROPE FROM TRUNK.

SLOW RELEASE FERTILIZER

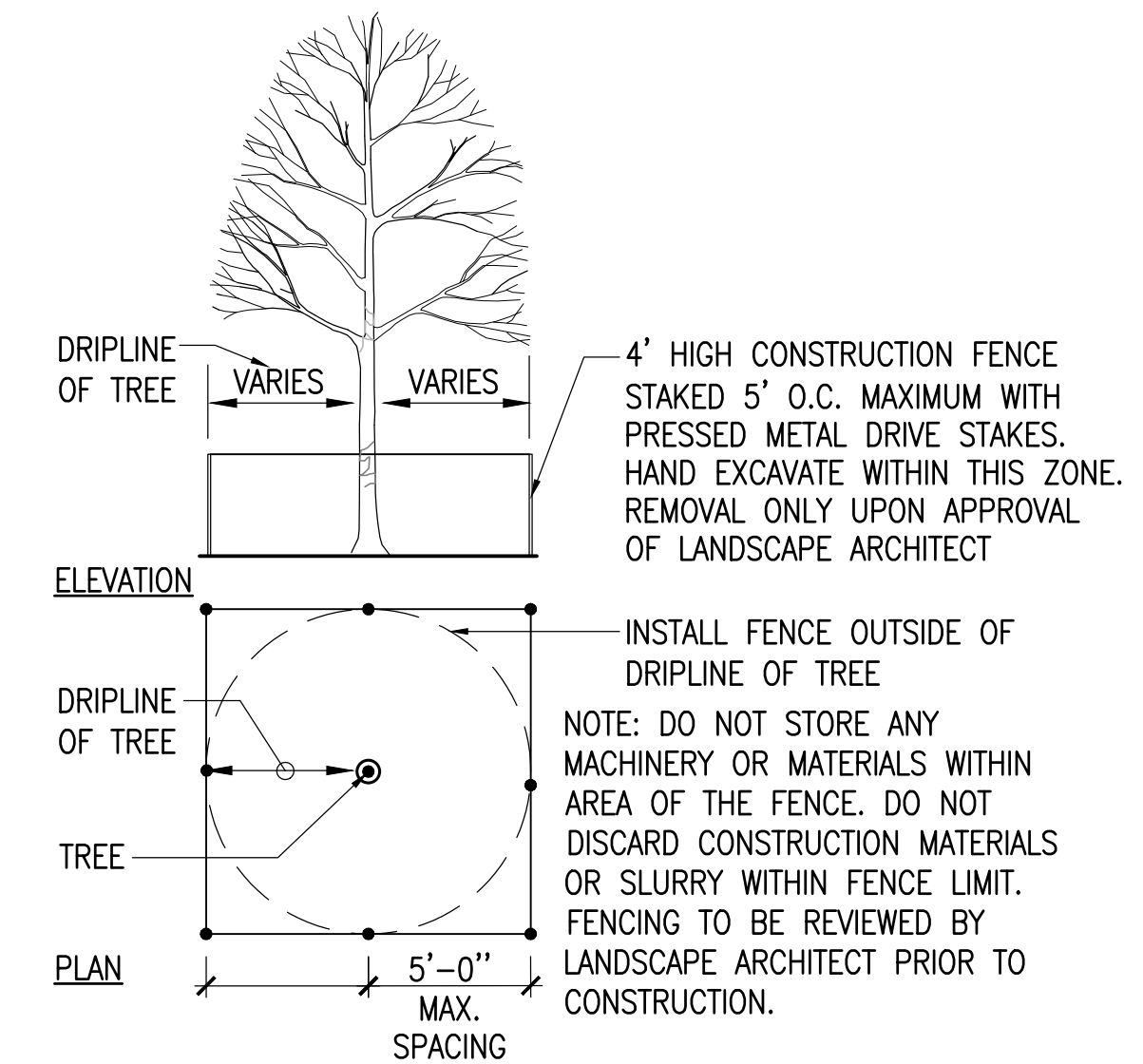
COMPACTED SUBGRADE BENCH UNDER TREE

UNDISTURBED SUBGRADE OR COMPACTED BACKFILL. ROUGH GRADE TO REMAIN ON SLOPE.



SECTION ELEVATION

6 TREE PLANTING ON SLOPE
SCALE: N.T.S.



7 TREE PROTECTION - FENCE
SCALE: N.T.S.

3	REVISION #3	04.13.2023
2	REVISION #2	02.17.2023
1	REVISION #1	01.23.2023

NO.	REVISION	DATE
-----	----------	------

kzla
Kylie Zick Landscape Architecture, Inc.
36 Bronnfield Street Suite 202 Boston, MA 02108 617 451-1018 Tel www.kyiezick.com



DRAFT CONSTRUCTION DOCUMENT SET

Job Number:
Project: 1021-1025 MASSACHUSETTS AVENUE

Drawn By: YL Checked By: KZ

Date: SEPTEMBER 8, 2022

Scale: 1"=20'-0"

Drawing Title:

DETAILS