



# Arlington High School Building Project

AHS Construction Update – July 13, 2023

## Arlington HS Construction Schedule: April 2020 – September 2025

### Construction Details

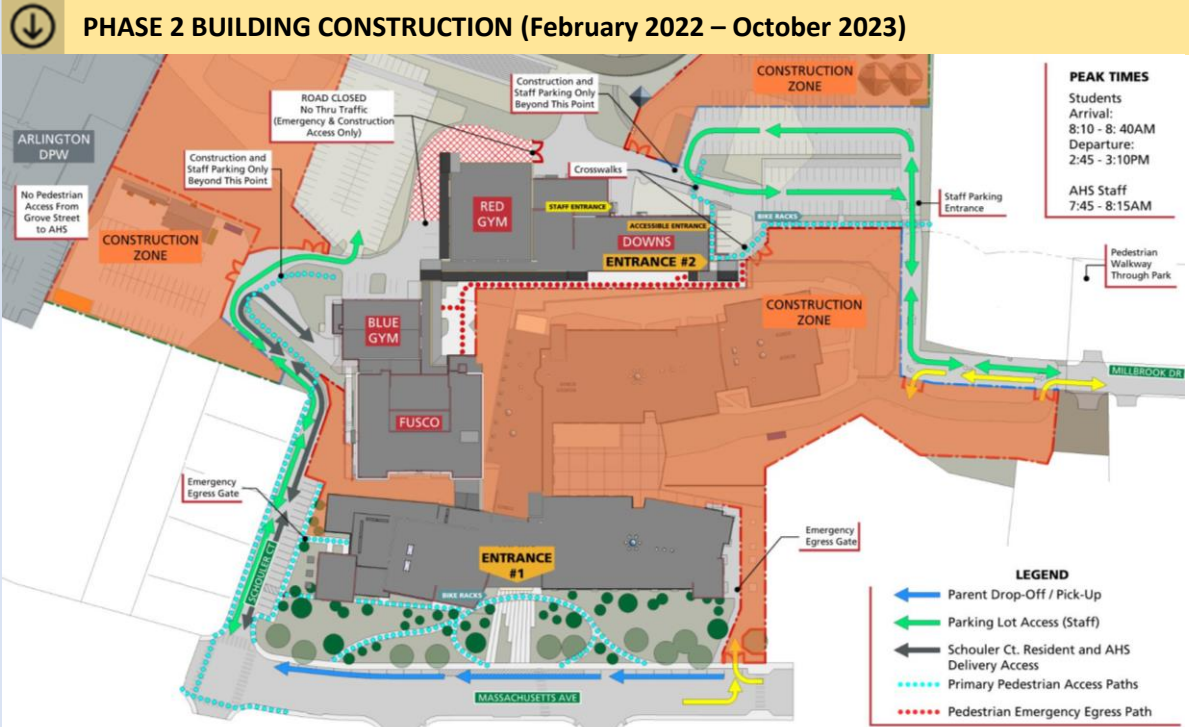
Phase 1 construction is complete and the new Performing Arts and Science, Technology, Engineering, Arts & Mathematics wings are open. Phase 2 began immediately after the Phase 1 building turnover. Part of the old school has been demolished and that area is closed off from the existing school during the next phase of construction.

### COVID-19 Update

The health and safety of the community and workers on-site are of the highest priority and were taken into consideration in all project-related decisions. The Town of Arlington continues to monitor all state and federal guidelines regarding best practices during this unusual time and will modify recommendations as necessary to maintain safety and health for our community and construction workers.

Sign up for Weekly Construction Updates  
<https://ahsbuilding.org/news/construction-updates/>  
For more information, visit:  
[www.ahsbuilding.org](http://www.ahsbuilding.org)  
Email questions or concerns to:  
[ahsbuilding@arlington.k12.ma.us](mailto:ahsbuilding@arlington.k12.ma.us)

For immediate, on-site assistance contact Hal Raymond, Skanska Site Representative, (617) 352-8593



### Construction Look Ahead – Week of July 17<sup>th</sup>, 2023

The above diagram covers all work to be performed during the current phase. Specific work to be performed this week includes:

#### Public Way Impacts:

- Deliveries ongoing
- From 6/24/23 through 8/25/23 access to school parking and fields via Mill Brook Dr. will be closed. The only access to Peirce Field and school parking will be from Schouler Ct. (via Mass Ave.) See Photo 1 for details.

#### General Site Activities:

- Phase 2:
  - Installation of windows, curtain walls, and masonry
  - Installation of drywall, ceramic tiles, ceiling grids, and flooring
  - Installation of door frames, interior windows, and casework
  - Install mechanical, electrical, plumbing, and fire sprinklers
  - Painting
  - Grading and paving of Mill Brook Drive
  - Dust mitigation ongoing
- Material Stockpile/Temp Construction Lot for contractor storage and parking
- Schouler Court:
  - Construction vehicles entering and exiting project site

#### Weekend Work/Holiday Work/Night Work:

- Saturday work is required for the foreseeable future

# ARLINGTON HIGH SCHOOL

## WEEKLY UPDATE – WEEK OF JULY 17<sup>TH</sup>, 2023

### Photo 1:

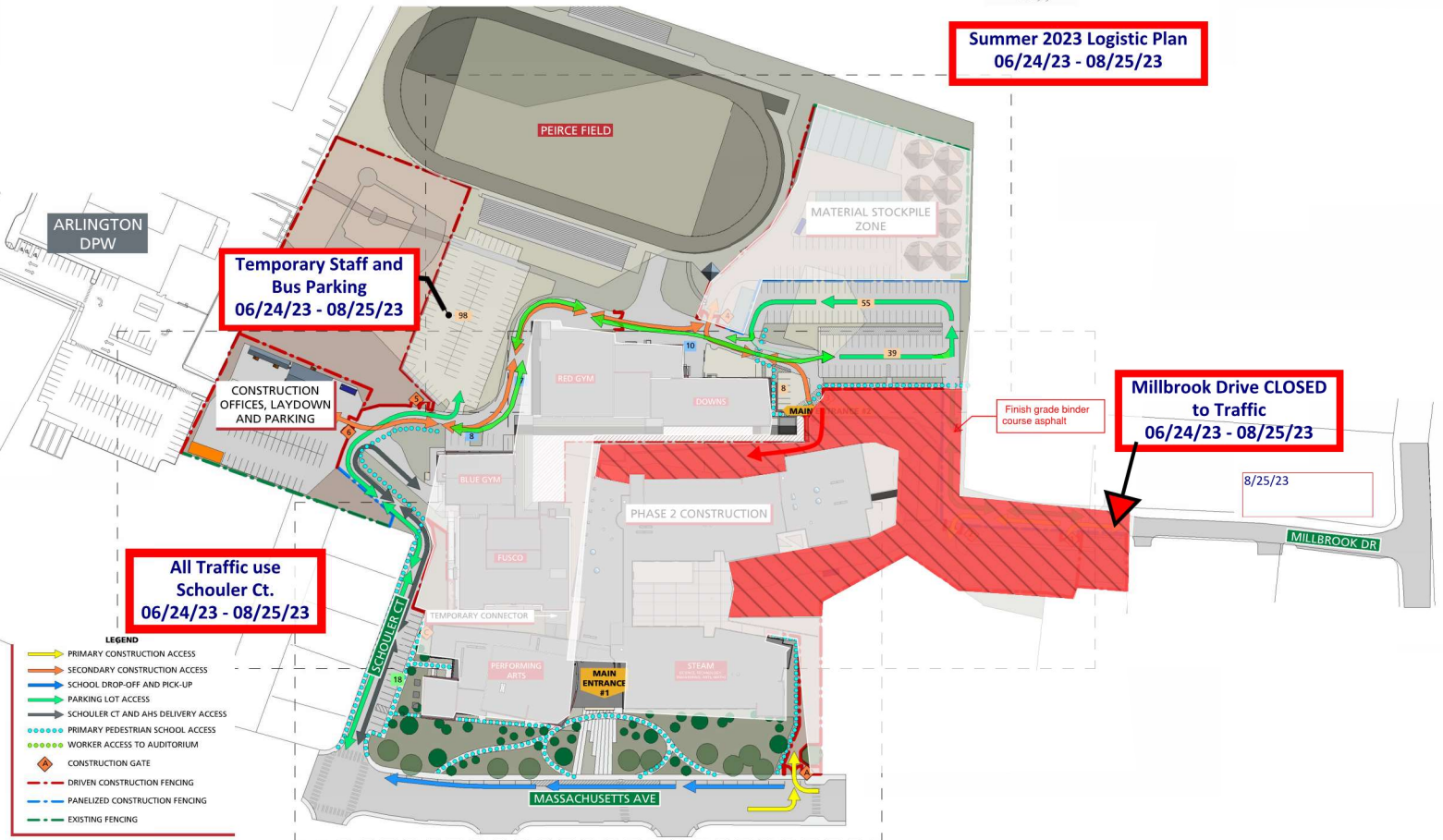
### Site Logistic Plan for 6/24/23 – 8/25/23.

All vehicle access to Peirce Field and school parking will be from Schouler Ct. (via Mass Ave.)

### Arlington High School



**Summer 2023 Logistic Plan**  
06/24/23 - 08/25/23



# ARLINGTON HIGH SCHOOL

## WEEKLY UPDATE – WEEK OF JULY 17<sup>TH</sup>, 2023



*Photograph 2: Phase 2 Southeast Elevation*



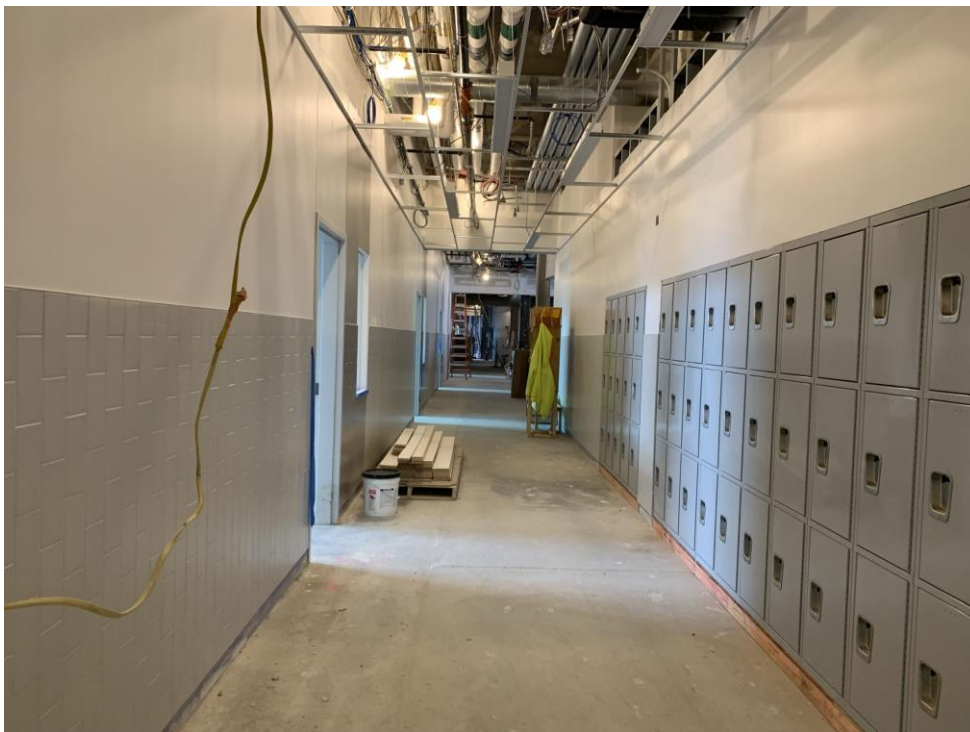
*Photograph 3: Looking South onto plaza from 4<sup>th</sup> Floor connecting corridor*

# ARLINGTON HIGH SCHOOL

## WEEKLY UPDATE – WEEK OF JULY 17<sup>TH</sup>, 2023



***Photograph 4: Progress of lightwell***



***Photograph 5: Wall ceramic tiles and lockers completed in corridor***