

Recreation Department
Joseph Connelly, Director of Recreation

TOWN OF ARLINGTON



Recreation Department

PARK COMMISSIONERS

Shirley Canniff
Leslie Mayer
Jen Rothenberg
Phil Lasker
Scott Walker
Josh Fenollosa - Associate
Sarah Carrier- Associate

MEETING NOTICE

The Park and Recreation Commission
Tuesday, September 26, 2023
7:00 PM – Arlington Community Center (2nd Floor)

AGENDA

- 1) McClennan Skate Park – Lindsay Skay Whitacre
- 2) FY 2025 CPA Requests – Menotomy Play/Picnic Area and Athletic Court Selection
 - a) Athletic Court Needs Assessment Review
- 3) Capital Project Review
 - a) Robbins Farm Park Construction
 - b) Hills Hill MTB
 - c) Menotomy Design
 - d) Parallel Design
- 4) Comments and Items for Future Meetings:
 - a) Permitting events in public spaces with alcohol
- 5) Correspondence Received: Spy Pond Path Suggestion (M. Guyton)
- 6) Minute Approval – 8/29/2023, 9/12/2023
- 7) New Business
- 8) Public Comment

McClennan Skatepark updates?

Lindsay Skay Whitacre <lmskay@gmail.com>

Wed 9/13/2023 2:30 PM

To: Joe Connelly <jconnelly@town.arlington.ma.us>

CAUTION: This email originated from outside your organization. Exercise caution when opening attachments or clicking links, especially from unknown senders.

Hi Joseph,

My name is Lindsay Whitacre and I am an Arlington resident and parent of a young skateboarder. I know that the parks are being updated slowly, including McClennen skatepark which, as you know, is warped, dangerous, and therefore unusable.

I looked over the plans highlighted in the feasibility capital projects study and while they look promising, I am wondering what the timeline is and how much of the plan is a wishlist vs what the town can afford. I am happy to volunteer my time and help, and I have a list of parents who are also interested.

Thank you.

Best,

Lindsay Whitacre

137 Mt Vernon St, Arlington, MA 02476

--

Lindsay Skay Whitacre

E: lmskay@gmail.com

<http://www.linkedin.com/in/lindsaywhitacre>

1

7



TOWN OF ARLINGTON

ATHLETIC COURT NEEDS ASSESSMENT

PUBLIC FORUM #2

SEPTEMBER 20, 2023 | 6 PM

COURT STUDY RESULTS AND RECOMMENDED IMPROVEMENTS

ACTIVITAS

landscape architecture | civil engineering

3

TOWN OF ARLINGTON ATHLETIC COURT NEEDS ASSESSMENT

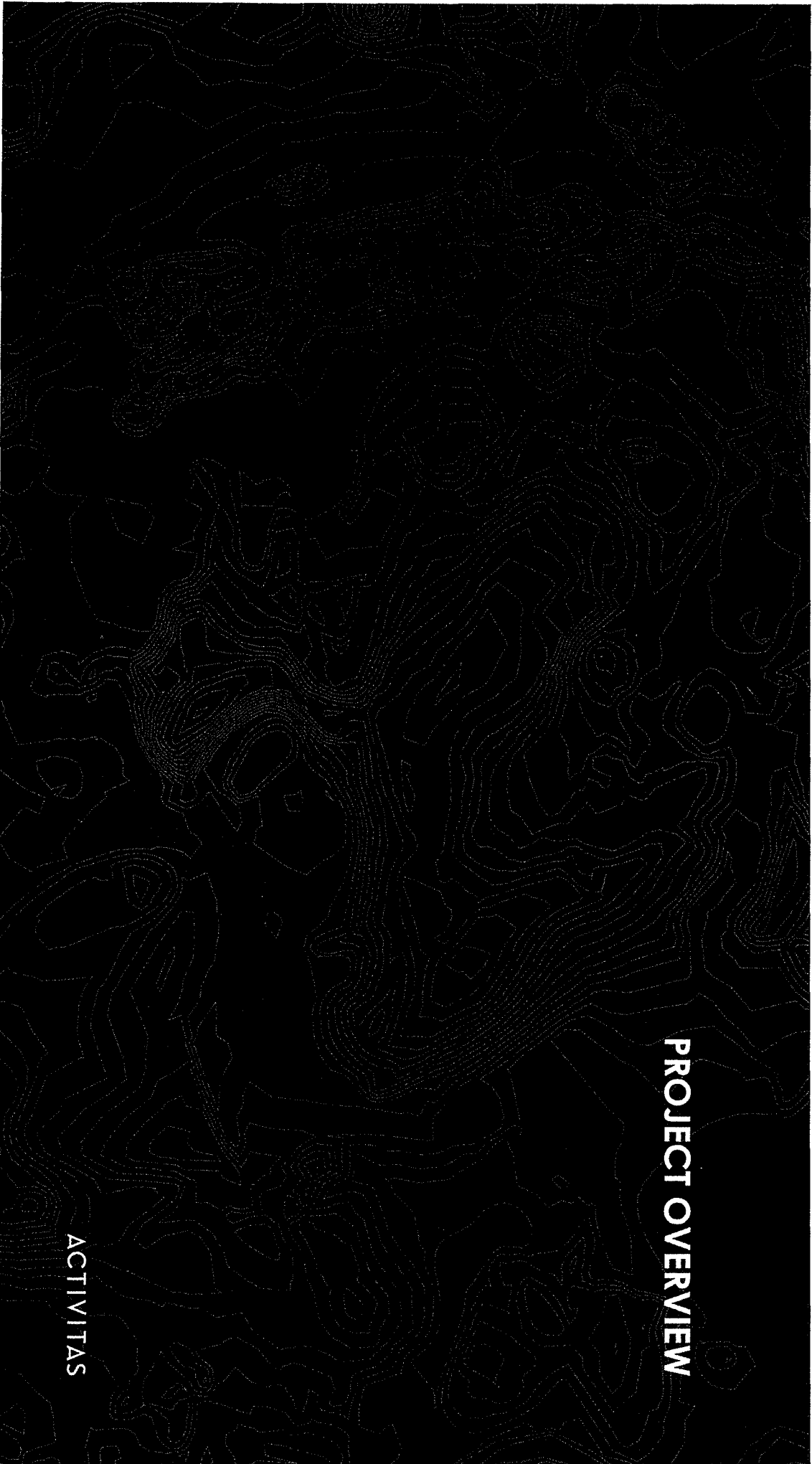
PUBLIC FORUM #2



AGENDA:

- 1 | Project Overview
- 2 | Survey Results
- 3 | Court Inventory & Analysis
- 4 | Recommended Improvements
- 5 | Discussion





PROJECT OVERVIEW

ACTIVITAS

5

TOWN OF ARLINGTON ATHLETIC COURT NEEDS ASSESSMENT

PUBLIC FORUM #2



LIST OF STUDY SITES

- | | |
|------------------------|-------------------------------|
| 1 Buzzell Field Park | 13 Bishop Elementary School |
| 2 Crosby Park | 14 Bracket Elementary School |
| 3 Florence Field Park | 15 Gibbs School |
| 4 Grove Street Park | 16 Hardy Elementary School |
| 5 Magnolia Park | 17 Parmenter School |
| 6 North Union Park | 18 Peirce Elementary School |
| 7 Parallel Park | 19 Stratton Elementary School |
| 8 Reservoir Beach Park | |
| 9 Robbins Farm Park | |
| 10 Spy Pond Park | |
| 11 Summer Street Park | |
| 12 Waldo Park | |



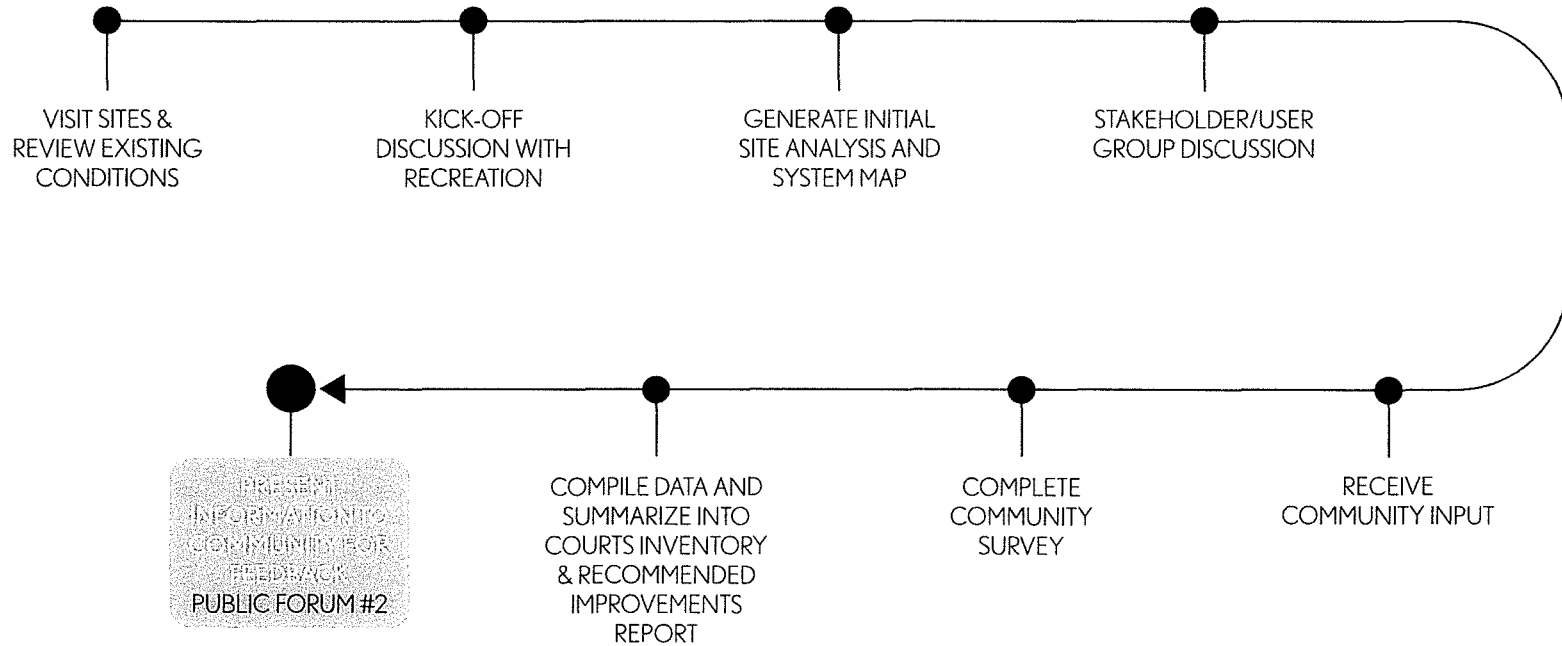
2

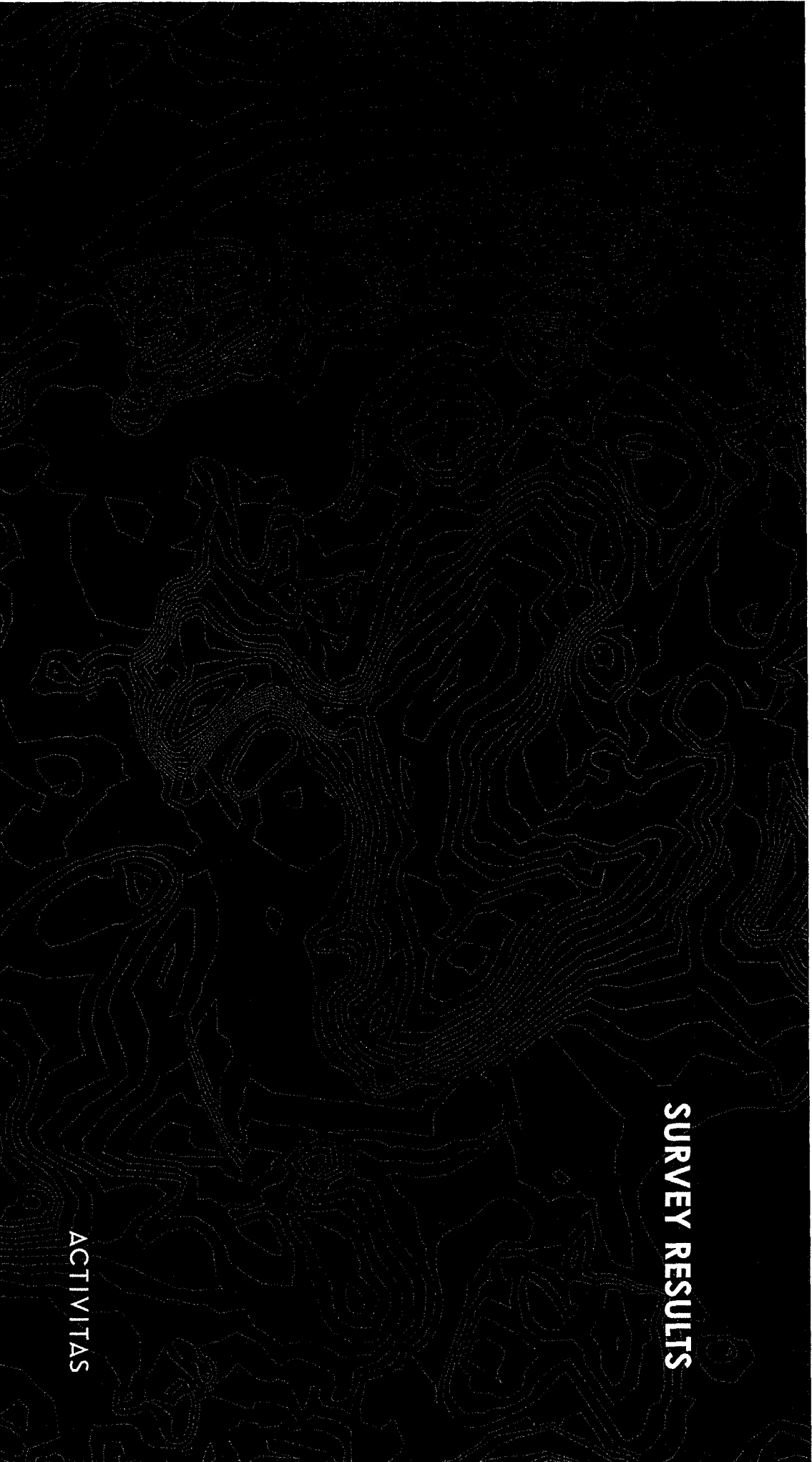
TOWN OF ARLINGTON ATHLETIC COURT NEEDS ASSESSMENT

PUBLIC FORUM #2



PROJECT TIMELINE





SURVEY RESULTS

ACTIVITAS

7

00



SURVEY RESULTS

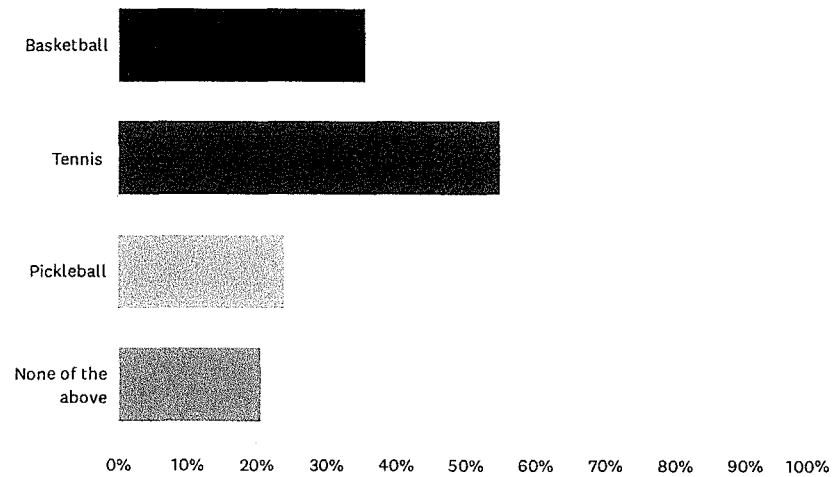
Three week survey period, 552 responses received

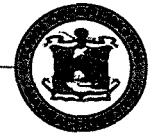
Information collected:

- Sports played
- Specific courts used
- Typical hours and duration of use
- Favorite & least favorite court (per sport played)
- Reasons for favorite/least favorite court selection
- Desired attributes and amenities for future park development
- Other potential new court sports to explore in Arlington

Q1 What types of court facilities do you use in Arlington? (Select all that apply)

Answered: 552 Skipped: 0





KEY INSIGHTS: POPULARITY

BASKETBALL

Most Users/Favorite: **Robbins Farm Park**

Fewest Users: Parmenter School

Users' Least Favorite: Summer Street Park

TENNIS

Most Users/Favorite: Grove Street Park

Fewest Users: **Crosby Park**

Users' Least Favorite: **Crosby Park**

PICKLEBALL

Most Users/Favorite: **Crosby Park**

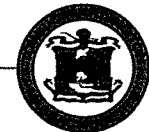
Fewest Users: **Robbins Farm Park**

Users' Least Favorite: **Robbins Farm Park**

INSIGHTS

CONFLICTING USES
 Favorite Pickleball court = least favorite Tennis court
 Favorite Basketball court = least favorite Pickleball court
 Favorite Tennis court = second least favorite Pickleball court
 "Court is too crowded" was the most common reason to dislike a court

PROXIMITY IS KEY
 "Proximity to Home, School or Work" was the top reason for favoring every court in the study



KEY INSIGHTS: PATTERNS OF USE

BASKETBALL

Typical Play Hours:

17% Before 3PM

83% After 3PM

Typical Play Duration:

73% Under 1 Hour

27% Over 1 Hour

TENNIS

Typical Play Hours:

38% Before 3PM

62% After 3PM

Typical Play Duration:

36% Under 1 Hour

64% Over 1 Hour

PICKLEBALL

Typical Play Hours:

58% Before 3PM

42% After 3PM

Typical Play Duration:

31% Under 1 Hour

69% Over 1 Hour

INSIGHTS

REDUCING COMPETITION

Tennis and Pickleball users are competing for courts at the same hours
Play can last a long time for both sports
Conflicting use between Tennis and Pickleball was a common reason to dislike a court
Shared use between Basketball and Pickleball may create less conflict

COURTS INVENTORY & ANALYSIS

ACTIVITAS



EXISTING COURTS ANALYSIS

Three metrics used to determine renovation potential

POPULARITY

Survey usage data measured against the median number of responses for each sport type at each court

CONDITION

Existing physical conditions analyzed onsite by Activitas

UTILITY

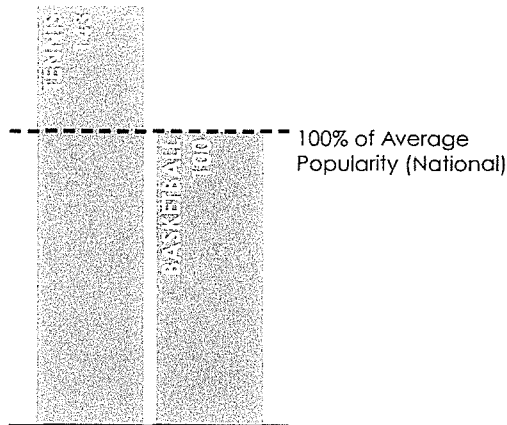
Playability and accessibility of the court, based on the size of the court, number of courts, availability of amenities such as lighting, location, and availability of parking and transportation

COURT	SPORT	POPULARITY	CONDITION	UTILITY
BISHOP	Basketball	Average	*	*
BRACKET	Basketball	Average	Poor	Moderate
BUZZELL	Basketball	Average	Fair/Good	High
CROSBY	Basketball	Low	Poor/Fair	Low
CROSBY	Tennis (4)/Pickleball	Average	Fair	High
FLORENCE	Basketball	High	Poor/Fair	Low
GIBBS	Basketball Half-Court	Low	Good	Low
GROVE STREET	Tennis (5)/Pickleball	High	Good	High
HARDY	Basketball	Average	Good	Low
MAGNOLIA	Basketball Half-Court	Low	Good	Low
NORTH UNION	Basketball	Average	Fair	High
PARALLEL	Basketball	Low	Poor	Moderate
PARMENTER	Basketball	Low	Poor	Low
PEIRCE	Basketball	High	*	*
RESERVOIR	Multi-Sport	Low	Fair/Good	Low
ROBBINS	Basketball/Pickleball	High	Good	Moderate
SPY POND	Tennis (5)/Pickleball	High	Good	High
SPY POND	Youth Tennis	Low	Good	Low
STRATTON	Basketball	Average	Poor/Fair	Low
STRATTON	Basketball Half-Court	Average	Poor/Fair	Low
SUMMER STREET	Basketball	Low	Poor	High
SUMMER STREET	Bocce (2)	Low	Poor	Low
WALDO	Basketball	Average	Poor/Fair	Moderate



MPI & LEVEL OF SERVICE

MARKET POTENTIAL INDEX

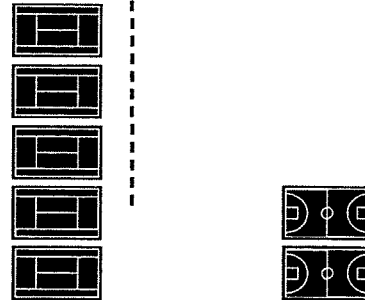


MPI indicates how much more or less popular a particular activity or commodity is expected to be in a community relative to the national average.

LEVEL OF SERVICE RECOMMENDATIONS

TENNIS
1 per 2,000

BASKETBALL
1 per 5,000



The NRPA level-of-service ratio represents the minimum number of courts that can support a community's population (based on the national average popularity of the sport).

RECOMMENDATIONS FOR ARLINGTON

TENNIS	PICKLEBALL	BASKETBALL
MPI: 143 (143%)	MPI: UNKNOWN	MPI: 100 (100%)
AVERAGE LOS: 1 : 2,000	AVERAGE LOS: UNKNOWN	AVERAGE LOS: 1 : 5,000
RECOMMENDED LOS: 143% of 1 : 2,000 = 1.43 : 2,000 = 1 : 1,400	RECOMMENDED LOS: 100% of 1 : 2,000* = 1 : 2,000 *assumes similar LOS to tennis	RECOMMENDED LOS: 100% of 1 : 5,000 = 1 : 5,000
RECOMMENDED 32 COURTS	RECOMMENDED 23 COURTS	RECOMMENDED 9 COURTS
EXISTING 14 COURTS	EXISTING 8 COURTS	EXISTING 4 COURTS

3 | COURTS INVENTORY & ANALYSIS



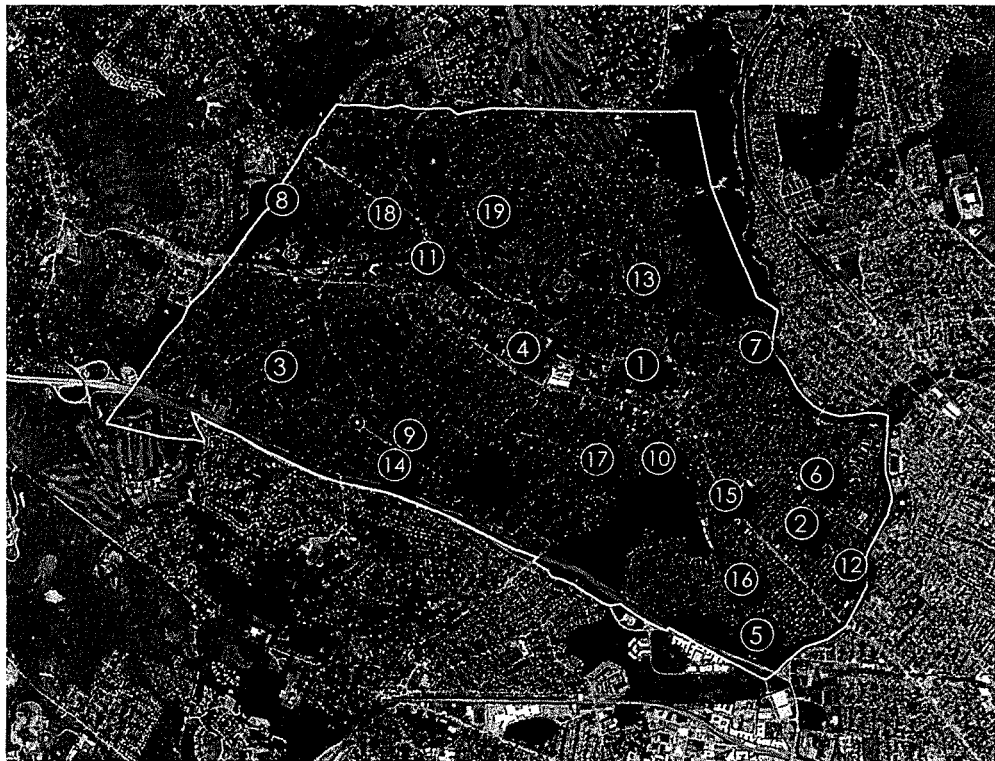
RECOMMENDED IMPROVEMENTS

ACTIVITAS

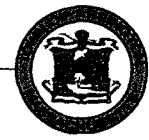


RECOMMENDED RENOVATION SITES

- 1 Buzzell Field Park
- 2 Crosby Park
- 3
- 4
- 5
- 6 North Union Park
- 7
- 8
- 9
- 10 Spy Pond Park
- 11 Summer Street Park
- 12
- 13
- 14
- 15
- 16
- 17
- 18
- 19



16



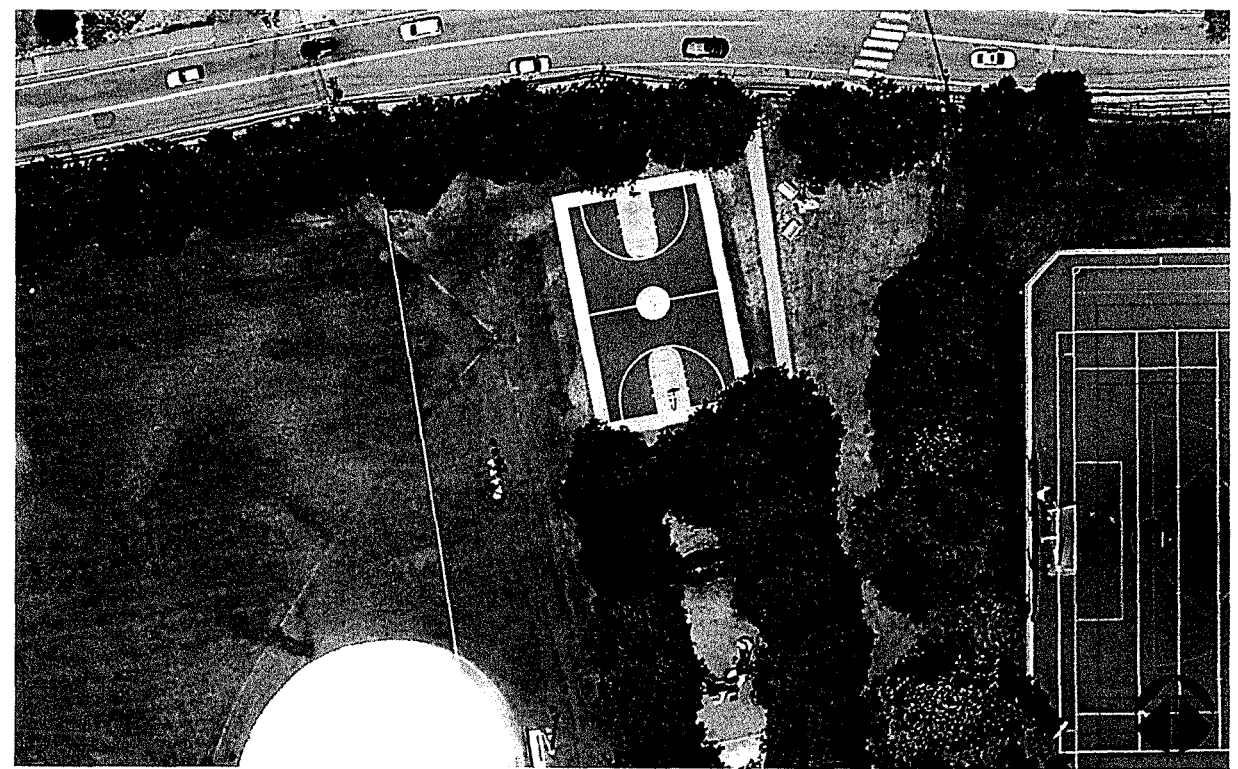
BUZZELL FIELD PARK

RECOMMENDED IMPROVEMENTS

- 1 New Full-Sized Basketball Courts (2)
- 2 Athletic Lighting
- 3 Shade Structure
- 4 Gathering Areas
- 5 Athletic Ball Netting

IMPACTS ON PROGRAMMING

- +1 Basketball Court
- Reduced conflict and increased safety between court and softball field
- Increased utility for basketball with new lighting system
- Opportunity for tournament play on two courts



7

TOWN OF ARLINGTON ATHLETIC COURT NEEDS ASSESSMENT

PUBLIC FORUM #2



BUZZELL FIELD PARK

RECOMMENDED IMPROVEMENTS

- 1 New Full-Sized Basketball Courts (2)
- 2 Athletic Lighting
- 3 Shade Structure
- 4 Gathering Areas
- 5 Athletic Ball Netting

IMPACTS ON PROGRAMMING

- +1 Basketball Court
- Reduced conflict and increased safety between court and softball field
- Increased utility for basketball with new lighting system
- Opportunity for tournament play on two courts



TOWN OF ARLINGTON ATHLETIC COURT NEEDS ASSESSMENT

PUBLIC FORUM #2



CROSBY PARK

RECOMMENDED IMPROVEMENTS

- 1 New Tennis Courts (5)
- 2 New Pickleball Courts (4)
- 3 Renovated Soccer Field
- 4 Existing Playground

IMPACTS ON PROGRAMMING

- +1 Tennis Court
- 1 Basketball Court (undersized)
- Reduced conflict on shared tennis/pickleball courts
- Increased utility for tennis/pickleball
- Reduced pickleball noise next to homes



4 | RECOMMENDED IMPROVEMENTS

TOWN OF ARLINGTON ATHLETIC COURT NEEDS ASSESSMENT

PUBLIC FORUM #2



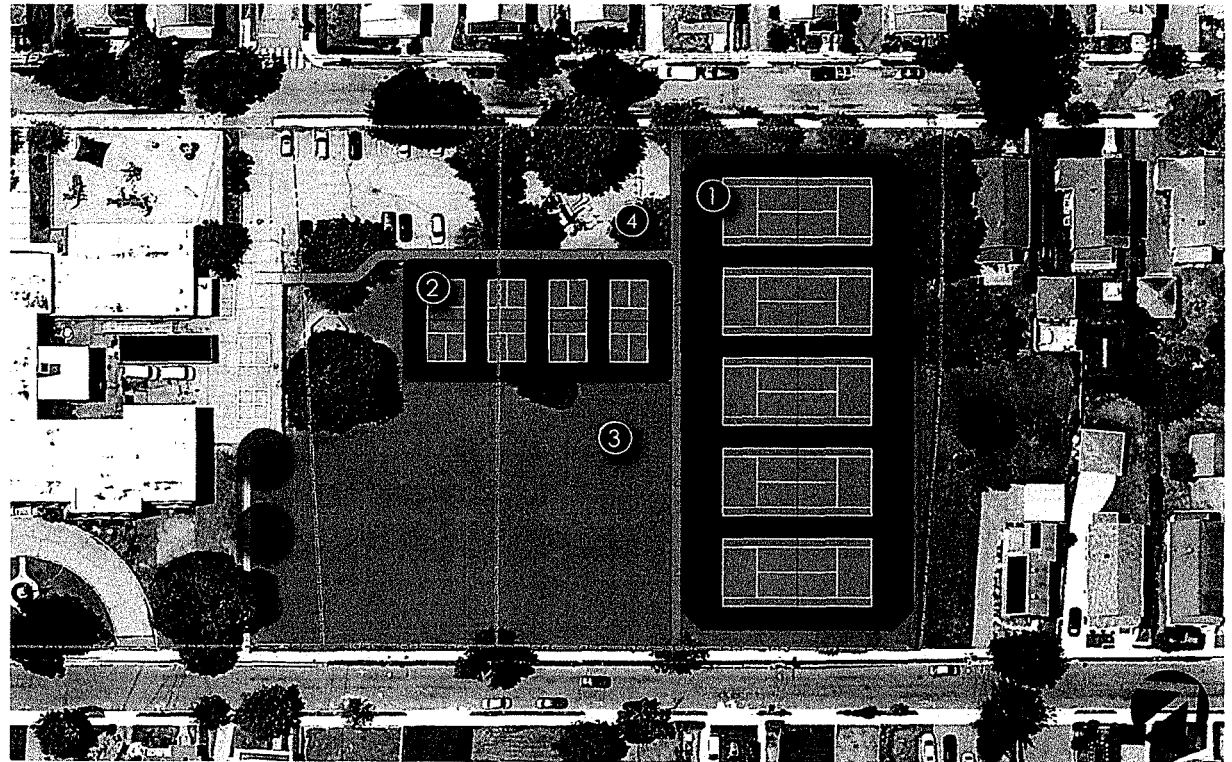
CROSBY PARK

RECOMMENDED IMPROVEMENTS

- ① New Tennis Courts (5)
- ② New Pickleball Courts (4)
- ③ Renovated Soccer Field
- ④ Existing Playground

IMPACTS ON PROGRAMMING

- +1 Tennis Court
- 1 Basketball Court (undersized)
- Reduced conflict on shared tennis/pickleball courts
- Increased utility for tennis/pickleball
- Reduced pickleball noise next to homes



4 | RECOMMENDED IMPROVEMENTS

20

TOWN OF ARLINGTON ATHLETIC COURT NEEDS ASSESSMENT

PUBLIC FORUM #2



NORTH UNION PARK

RECOMMENDED IMPROVEMENTS

- 1 New Full-Sized Basketball Courts (2)
- 2 Athletic Lighting
- 3 Shade Structure
- 4 Gathering Area Adjacent to Spray Pad

IMPACTS ON PROGRAMMING

+1 Basketball Court
Increased utility for basketball with new lighting system
Opportunity for tournament play on two courts



TOWN OF ARLINGTON ATHLETIC COURT NEEDS ASSESSMENT

PUBLIC FORUM #2



NORTH UNION PARK

RECOMMENDED IMPROVEMENTS

- 1 New Full-Sized Basketball Courts (2)
- 2 Athletic Lighting
- 3 Shade Structure
- 4 Gathering Area Adjacent to Spray Pad

IMPACTS ON PROGRAMMING

+1 Basketball Court
 Increased utility for basketball with new lighting system
 Opportunity for tournament play on two courts



28



SPY POND PARK

RECOMMENDED IMPROVEMENTS

- ① New Pickleball Courts (4)
- ② Existing Tennis Courts
- ③ Shade Structure/Gathering Area
- ④ Parking Area (36 Spaces)

IMPACTS ON PROGRAMMING

- 1 Practice Tennis Court
- Reduced conflict on shared tennis/
pickleball courts
- Increased utility for tennis/pickleball



23



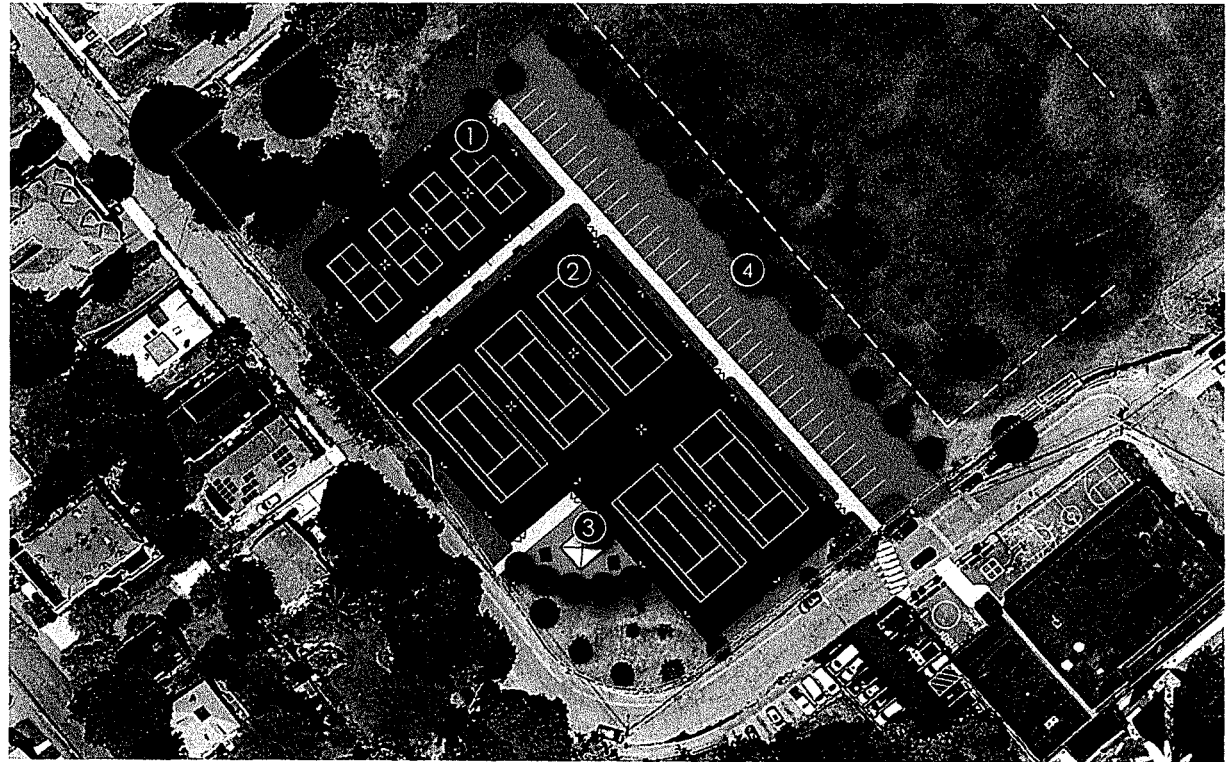
SPY POND PARK

RECOMMENDED IMPROVEMENTS

- ① New Pickleball Courts (4)
- ② Existing Tennis Courts
- ③ Shade Structure/Gathering Area
- ④ Parking Area (36 Spaces)

IMPACTS ON PROGRAMMING

- 1 Practice Tennis Court
- Reduced conflict on shared tennis/
pickleball courts
- Increased utility for tennis/pickleball



24



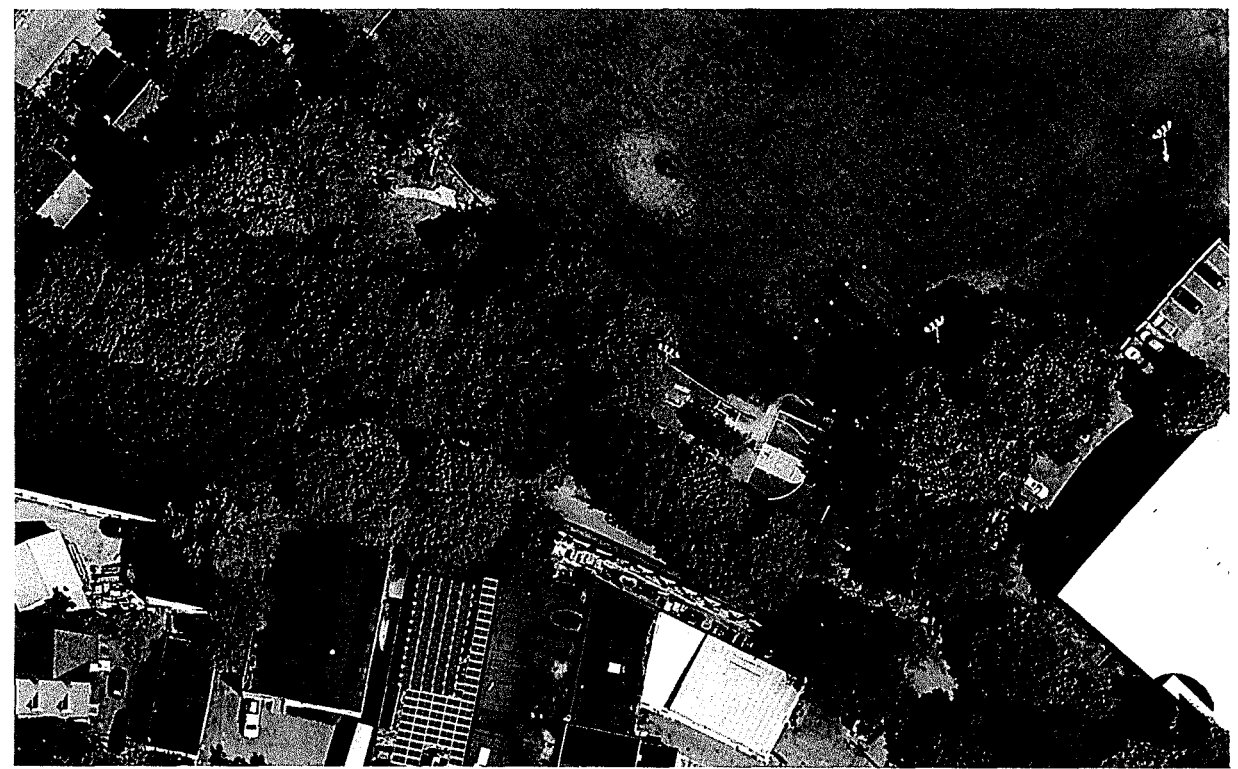
SUMMER STREET PARK

RECOMMENDED IMPROVEMENTS

- 1 New Pickleball Courts (3)
- 2 Athletic Lighting
- 3 Gathering Area with Picnic & Game Tables

IMPACTS ON PROGRAMMING

- +3 Pickleball Courts
- 1 Basketball Court
- 2 Bocce Courts
- Increased utility for pickleball with upgraded lighting system
- Increased opportunities for passive recreation & tai chi



25



SUMMER STREET PARK

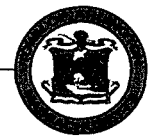
RECOMMENDED IMPROVEMENTS

- ① New Pickleball Courts (3)
- ② Athletic Lighting
- ③ Gathering Area with Picnic & Game Tables

IMPACTS ON PROGRAMMING

- +3 Pickleball Courts
- 1 Basketball Court
- 2 Bocce Courts
- Increased utility for pickleball with upgraded lighting system
- Increased opportunities for passive recreation & tai chi





IMPACTS ON PROGRAMMING

TENNIS

RECOMMENDED	EXISTING	PROPOSED
32 COURTS	14 COURTS	15 COURTS

NET GAIN
+1 COURTS

ADDITIONAL IMPACTS

Removes pickleball conflicts from tennis courts, returning at least 4 courts to tennis use

Potential to move an institutional tennis program to Crosby Park, freeing up time at other courts

Expands utility with new parking at Spy Pond

PICKLEBALL

RECOMMENDED	EXISTING	PROPOSED
23 COURTS	8 COURTS	15 COURTS

NET GAIN
+7 COURTS

ADDITIONAL IMPACTS

Creates 11 dedicated courts for pickleball use only

Allows pickleball nets to be permanent

Could expand pickleball at other courts (basketball courts, parking areas) with line painting

*Proposed inventory: 4 painted on tennis courts (Robbins Farm, Grove Street); 11 dedicated courts (Crosby Park, Spy Pond Park, Summer Street)

BASKETBALL

RECOMMENDED	EXISTING	PROPOSED
9 COURTS	4 COURTS*	5 COURTS

NET GAIN
+1 COURTS

ADDITIONAL IMPACTS

Expands utility for tournament play with side-by-side courts at 2 parks

Expands hours of availability with lights

*full-sized courts for high school/adult play
*potential new painted courts at Pierce/Bishop Schools not studied

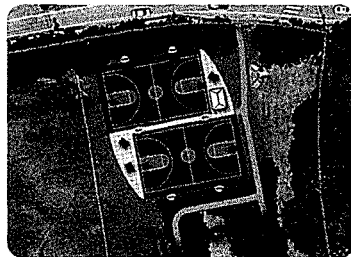
28

TOWN OF ARLINGTON ATHLETIC COURT NEEDS ASSESSMENT

PUBLIC FORUM #2



OPINION OF COSTS



BUZZELL FIELD PARK

- 2 Basketball Courts
- Ball Netting
- Shade Structure

\$629,000



CROSBY PARK

- 5 Tennis Courts
- 4 Pickleball Courts
- New Fencing
- Lawn Improvements

\$1,425,000



NORTH UNION PARK

- 2 Basketball Courts
- Shade Structure
- Landscaping

\$515,000



SPY POND PARK

- 4 Pickleball Courts
- Parking Area
- Shade Structure
- Landscaping

\$943,000



SUMMER STREET PARK

- 3 Pickleball Courts
- Gathering Space
- Landscaping

\$485,000

*cost opinions do not include lighting

4 | RECOMMENDED IMPROVEMENTS



Questions | Discussion | Next Steps

ACTIVITAS

ADDITIONAL QUESTIONS/COMMENTS?

Mark Novak, (781) 355-7043, mjn@activitas.com

Meg Buczynski, (781) 355-7040, megb@activitas.com

Olivia Messenger, (781) 355-7044, olivia@activitas.com

ARLINGTON PARK & RECREATION COMMISSION MEETING MINTUES

August 29, 2023

The Town of Arlington Park and Recreation Commission came to order for its online virtual meeting via Zoom on Tuesday August 29, 2023 at 6:00pm.

Commission Members: Phil Lasker, Shirley Canniff, Leslie Mayer, Jen Rothenberg, Scott Walker and Sarah Carrier. Josh Fenollosa was not in attendance. Recreation Director Joe Connelly was also present.

Anticipated Speakers: Josh Atkinson, Ngan Han, Adam Fearing, Bob Corning, Katalin Glasscock-Szabo from Stantec. Danielle Desilets, Kyle Zick and Rob Barella from KZLA. Ian Ramey, Emily Hunt and Andrew Arbaugh from Copley Wolff.

Preliminary Matter: Scott Walker, Park & Recreation Commission Chair, took formal attendance via a roll call and read a statement pertaining to Governor Baker’s Public Meeting Law change due to COVID-19 regarding virtual meetings. Meeting business ground rules and procedures were also covered by Mr. Walker.

Landscape Architect Interviews

The Park Commission interviewed the firms of Copley Wolff, Stantec, and Kyle Zick Associates. The format for the interviews was 20 minute presentation and 10 minutes question and answer.

Capital Plan Review

Mr. Connelly presented the Capital Plan for FY 25, 26 and 27.

- a. FY25 – Crosby Courts (CPA), Parallel (Capital), Field Master Plan (CPA and Capital)
- b. FY26 – Playground Master Plan (Capital and CPA), Florence Field (CPA), Thorndike Dog Park (Capital)
- c. FY27 – Buzzell Playground (CPA – pending playground study FY26)

Funding for Menotomy and Parallel is for design only. Build money has not been secured.

Capital –

- a. FY25 - \$720K
- b. FY26 - \$510K
- c. FY27 - \$135K

ARPA – N/A

CPA –

- a. FY25 – \$1M
- b. FY26 - \$750K
- c. FY27 - \$500K

Poet’s Corner Discussion – The Commission discussed the need to establish a concept for the town’s land and to have concepts ready to work with the new buyer of the Archdiocese parcel. The Commission further discussed how to incorporate Poet’s into the Capital request. The Commission discussed the following possibilities:

- a. FY25 – Poet’s design instead of Field Master Plan
- b. FY26 – Field Master Plan instead of Florence
- c. FY27 – Playground Master Plan
- d. Poet’s Corner – Constructing a dog park? How to maximize field space? Install a playground? What are the needs of the new owners and what can be negotiated?

New Business

Mr. Lasker – Weston and Sampson’s revised proposals for Hills’ Hill have been presented. Suggested doing the full design and phase construction as needed.

Public Comment – N/A

Ms. Canniff motioned to adjourn at 9:14pm, seconded by Ms. Rothenberg and approved 5-0.

The Arlington Park & Recreation Commission Meeting Minutes were respectfully submitted by Deanna Stacchi.

ARLINGTON PARK & RECREATION COMMISSION MEETING MINTUES

Draft

September 12, 2023

The Town of Arlington Park and Recreation Commission came to order in the Board of Health meeting room at the Community Center on Tuesday September 12, 2023 at 7:00pm.

Commission Members: Phil Lasker, Scott Walker, Shirley Canniff, Jen Rothenberg, Lesley Mayer, Josh Fenollosa and Sarah Carrier. Recreation Director Joseph Connelly was also present. Also in attendance was Conservation Commission liaison Nathaniel Stevens.

Speaking Members of the Public: See attached sign in sheet

Anticipated Speakers: Laura Kiesel, Karen Grossman, Jennifer Susse

Preliminary Matter: Scott Walker, Park & Recreation Commission chair, took formal attendance and welcomed members of the public to the Recreation Commission meeting.

Menotomy Bench Gift – Vincent Tempelman

Mr. Connelly reviewed the request for a honoree bench at Menotomy Rocks Park. The Commission reviewed the three recommended options and draft plaque language. The Commission was concerned with the accessibility of options 1 and 2. Ms. Mayer pointed out that there is a 5% requirement for accessible benches in the park and when you factored in all of the benches in the park that requirement would not be met. Ms. Mayer also stated that the Commission's goal was for best practice when it comes to accessibility not ADA minimums.

The Commission agreed and reviewed the plaque language. Ms. Lasker motioned to approve, seconded by Ms. Canniff and approved 5-0. Ms. Carrier asked if the Historical Commission was consulted and the FOMRP notified. Mr. Connelly stated that the FOMRP were informed but since nothing was being removed from the park he did not notify the Historical Commission. The Commission asked Mr. Connelly to notify Ms. Robinson of the Commission's approved vote.

Friends of Spy Pond Signage for Revegetation Area Request

Ms. Grossman reviewed the request for placing signage in the newly maintained and vegetated plant beds at Spy Pond Park. Ms. Grossman reviewed the sign size, language, material, and recommended locations. Ms. Mayer and the Commission discussed the difference between permanent signage and temporary signage. Mr. Connelly recommended a temporary signage plan to be reviewed in the spring of 2024.

Ms. Rothenberg motioned to approve two temporary signs at the proposed locations and for a review to occur during the spring of 2024. This motion was seconded by Ms. Mayer and approved, 5-0.

MBTA Communities Presentation –Jennifer Susse

Ms. Susse reviewed her presentation with the Commission regarding the MBTA Communities Act. The presentation included: the other communities involved and reasons for the efforts including equitable sustainability, educational inequities and health care disparities, racial justice and income inequality. Ms. Susse reviewed the history of housing in Arlington and the new MBTA Communities requirements. The Commission and Ms. Susse discussed the capacity number and the current proposal. Ms. Caniff asked if there were any

underground parking restrictions and Ms. Mayer asked if these recommended areas had any impact on open space zoned districts. Ms. Susse responded that there were no parking restrictions and it did not impact any open space land.

The Commission thanked Ms. Susse for her dedication to this effort and sharing the information with the Commission.

Signage for MK the Eagle Memorial and Rodenticide Use

Ms. Kiesel participated via zoom and begin her presentation to memorialize MK the eagle who passed away from poisoning. Ms. Kiesel stated that her goal was not only to honor MK but also educate the public on the dangers of rodenticides. Ms. Kiesel stated her reasoning for choosing Spy Pond is that it was where MK would hunt and it was a public space where the message could be widely seen.

Ms. Mayer stated that some of this educational information would not only benefit the Spy Pond area but all of the parks and could be appropriately be placed on the park bulletin boards.

The Commission discussed the temporary verse permanent nature of signage. Ms. Mayer and Ms. Rothenberg stated that the message and memorial could be separated and may be a nice community public art project.

Ms. Lasker stated that we don't allow memorializing humans in our parks and wanted consistency but agreed with the educational component. Ms. Canniff stated that the overall issue of the town's rat problems needed to be addressed by the town and that message should also be included in the educational component.

Mr. Connelly commented that any messaging should come from the appropriate department, in this case being the Board of Health. Mr. Connelly further stated Recreation could help facilitate the message but did not set public health policy.

Mr. Connelly will work with Ms. Kiesel on developing both an educational message that could be displayed on our bulletin boards and also set up a plan for a potential public art component similar to the "Penney the Swan" sculpture.

Spy Pond Portable Restroom Placement

This discussion was tabled.

Kelly Foundation and Recreation Cosponsorship Event

Mr. Connelly reviewed the details of the 10/29 event with the Commission.

Comments and Items for Future Meeting

Permitting events with alcohol on property under jurisdiction of the Park Commission.

Correspondence Received

Mr. Connelly stated that there was no correspondence and the correspondence on the agenda was an error.

Approval of Minutes:

The Commission tabled their 8/29 minutes. Ms. Rothenberg motioned to approve the minutes as amended, seconded by Ms. Mayer, and approved 4-0-1 with Ms. Canniff abstaining.

New Business:

Mr. Connelly informed the Commission that the special application for CPA funding for the Menotomy Playground was not successful as the cut off for a warrant article submission was missed. The Commission discussed the impacts this may have on FY25 requests.

Public Comment:

Laura Notman – Discussed the importance of the education of the dangers of rodenticides
Liz Reisberg –Commented on the work by Elaine Crowder in educating the community
Elaine Crowder – Discussed an upcoming forum on this issue and appropriate education

Ms. Rothenberg motioned to adjourn at 8:50pm, seconded by Ms. Canniff. Approved 5-0.

The Arlington Park & Recreation Commission Meeting Minutes were respectfully submitted by Joseph Connelly.

jogging path around Spy Pond

Matthew C. Guyton <mcguyton@mit.edu>

Tue 9/19/2023 12:17 AM

To: Jen Rothenberg <jrothenberg@town.arlington.ma.us>; Shirley Canniff
<scanniff@town.arlington.ma.us>; Leslie Mayer <lmayer@town.arlington.ma.us>

Cc: Joe Connelly <jconnelly@town.arlington.ma.us>

CAUTION: This email originated from outside your organization. Exercise caution when opening attachments or clicking links, especially from unknown senders.

Dear Parks & Recreation Commission,

What would it take to build a recreational path completely around Spy Pond? There is already a path on the Rt 2 side and through Spy Pond Park. The rest of the path around Spy Pond could be completed, perhaps by purchasing walkway easements through private properties via eminent domain, or by building a boardwalk along the shore. Has this idea been considered in Arlington?

When I lived in Cambridge years ago, I regularly jogged a circle around the Charles River on a path that was very heavily used. Seeing other people jogging and having a safe scenic route to do so was a great motivation to jog myself. Could we recreate something like that in Arlington?

-Matt Guyton
22 Irving St

35