

Hill's Hill

Kings Ct

King St

2A

Washington St

Cardia St

Workbar Arlington

Mirak Hyundai
Hyundai dealer

Hill's Hill, Arlington, MA

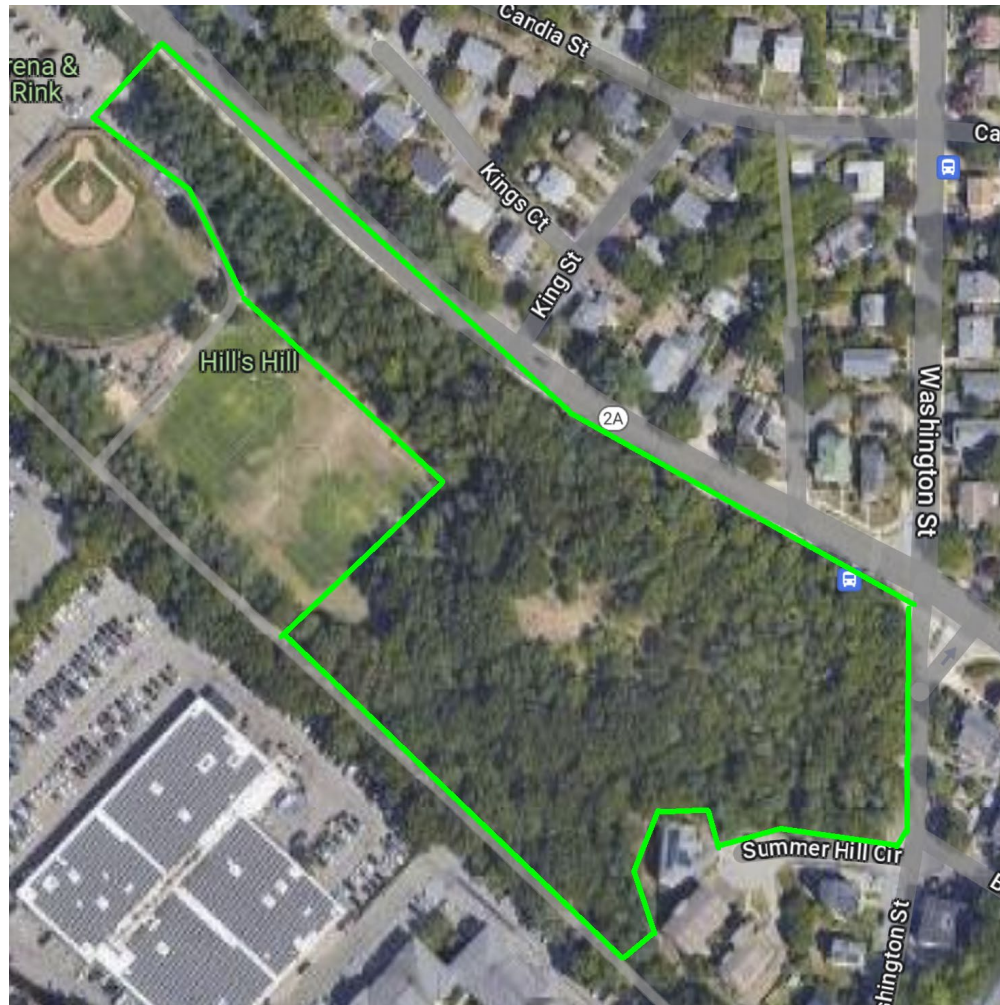
Summ...

Purpose

Our goal was to inventory the urban woodlot trees of Hill's Hill ahead of the construction of the mountain biking trail planned for the area.

Survey Area

Size: ~4 Acres
DBH: 3+ Inches
1,834 Trees
Two Surveyors
Approx. 3 Days



Methodology

Data Collected

- GPS Coordinates
- DBH
- Multi-stem
- Species
- Recommended Maintenance
- Prohibited Species

Prohibited Species

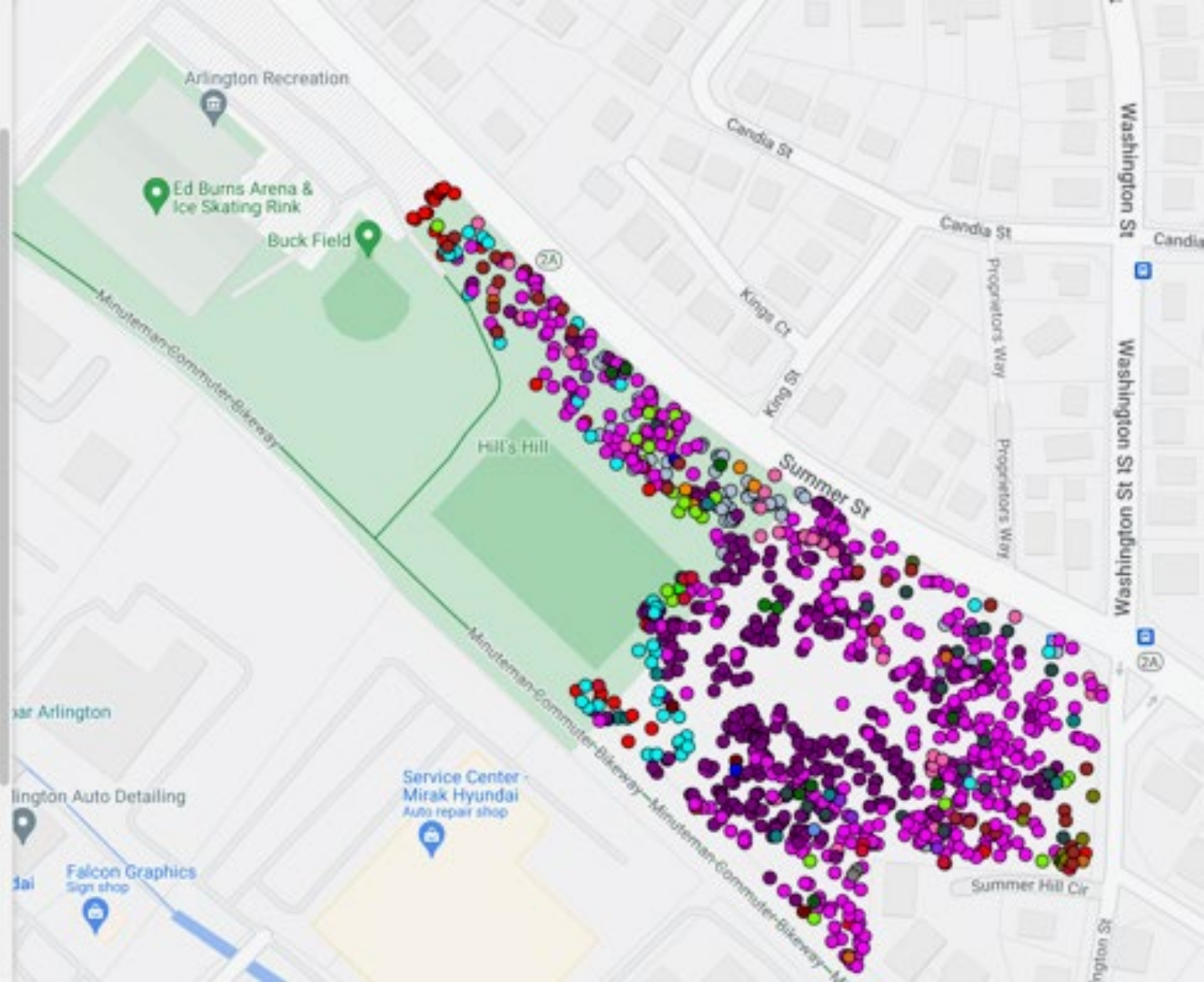
“The Massachusetts Prohibited Plant List prohibits the importation, sale, and trade of plants determined to be invasive in Massachusetts. This ban also covers the purchase and distribution of these plants and related activities, and includes all cultivars, varieties and hybrids of the species listed.”

–mass.gov/massachusetts-prohibited-plant-list

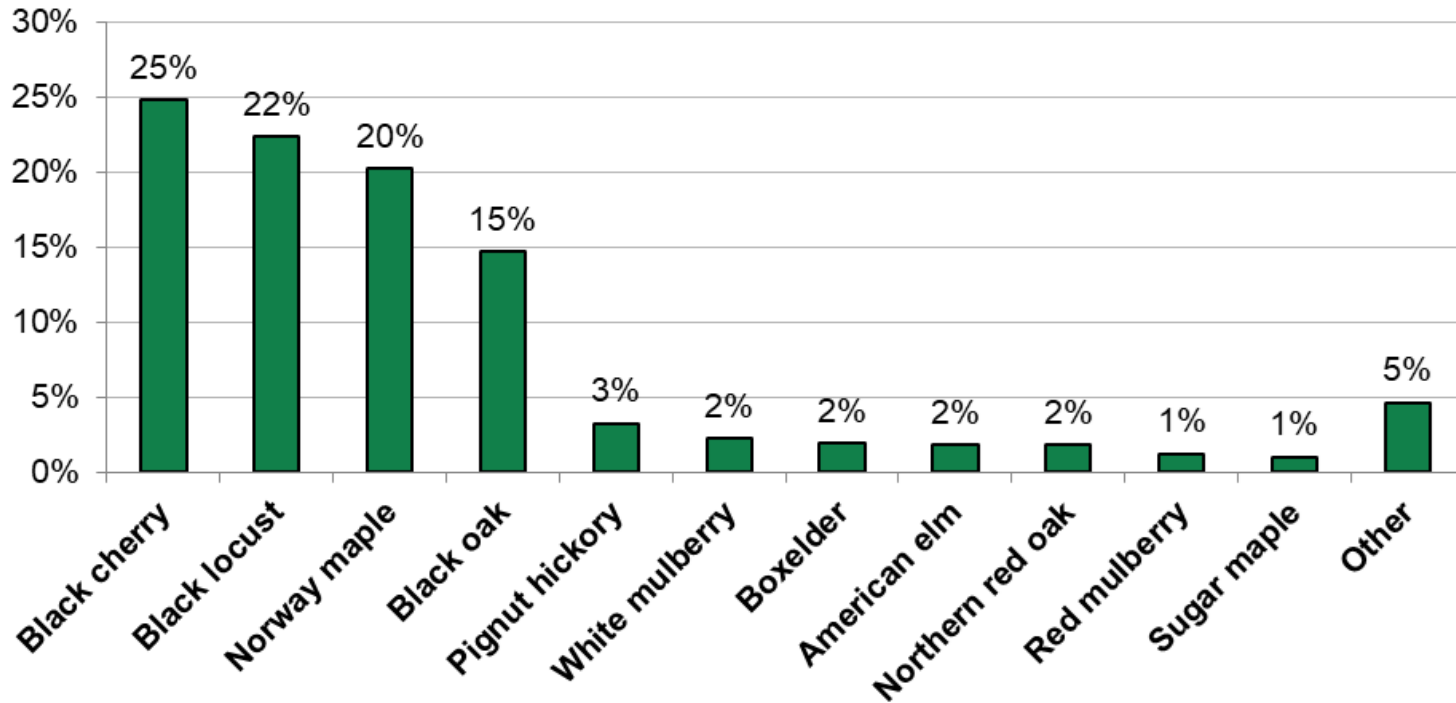
Prohibited Tree Species

- Amur Corktree
- Black Locust
- Common Buckthorn
- Glossy Buckthorn
- Autumn Olive
- Gray Willow
- Japanese Black Pine
- Norway Maple
- Sycamore Maple
- Tree-of-heaven

- American elm (33) ●
- Amur corktree (1) ●
- Bigtooth aspen (2) ●
- Black cherry (454) ●
- Black locust (410) ●
- Black oak (269) ●
- Boxelder (36) ●
- Common buckthorn (8) ●
- Common chokecherry (4) ●
- Green ash (2) ●
- Honeylocust (1) ●
- Horse chestnut (8) ●
- Northern hackberry (4) ●
- Northern red oak (33) ●
- Norway maple (371) ●
- Pignut hickory (60) ●
- Pin oak (3) ●
- Red mulberry (23) ●
- Scarlet oak (4) ●
- Shagbark hickory (1) ●
- Staghorn sumac (9) ●
- Sugar maple (19) ●
- Tree of heaven (11) ●
- White ash (4) ●
- White mulberry (41) ●
- White oak (6) ●
- apple spp (9) ●
- maple spp (1) ●
- oak spp (4) ●



Species Breakdown



Native & Unusual Species



Native & Unusual Species

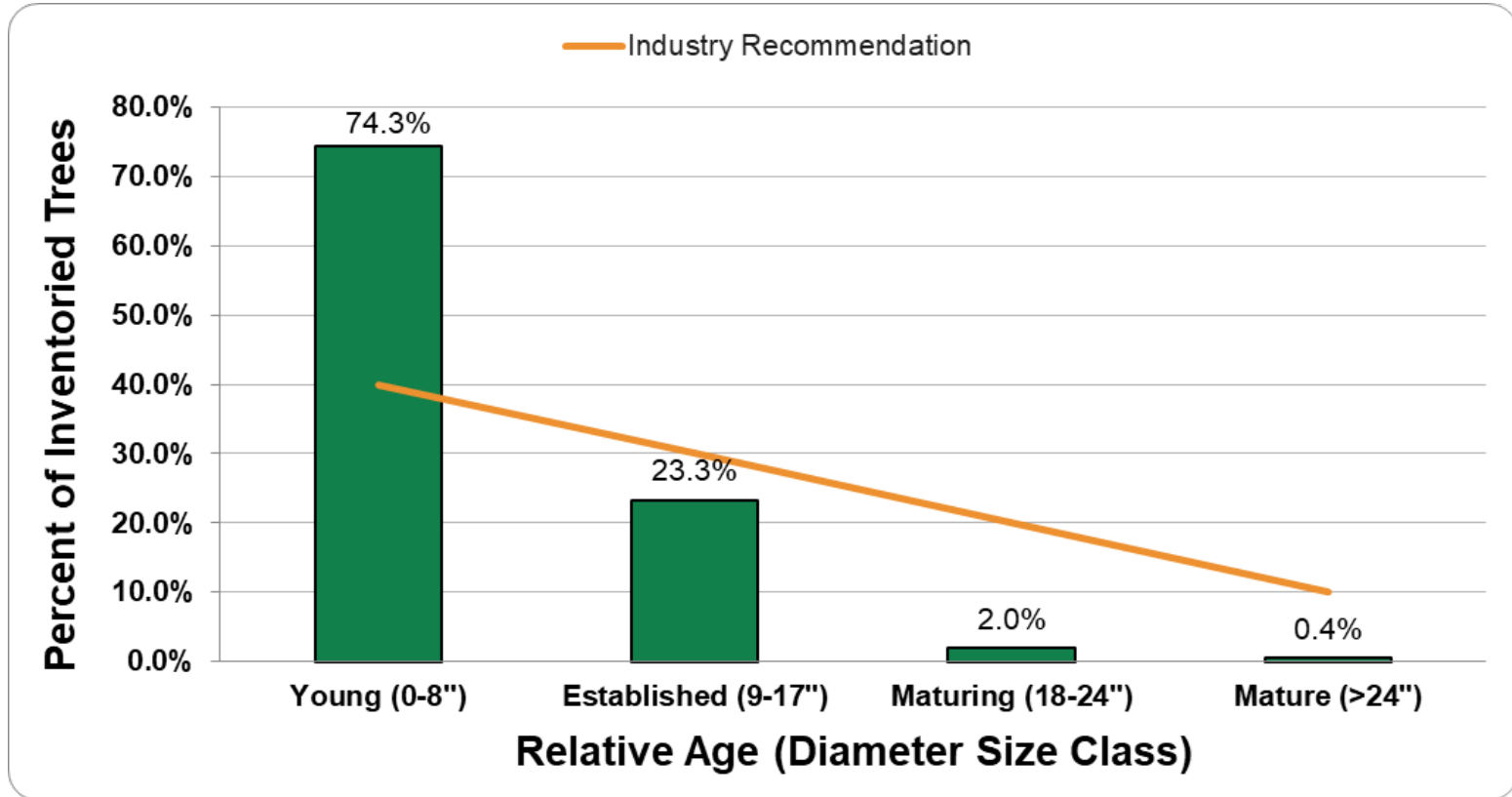
- Black oak
- Red oak
- White oak
- Scarlet oak
- Pin oak
- Hackberry
- Black cherry
- Sugar maple
- Pignut hickory
- Shagbark hickory
- Bitternut hickory
- Red mulberry
- Horsechestnut (n)

Red Mulberry

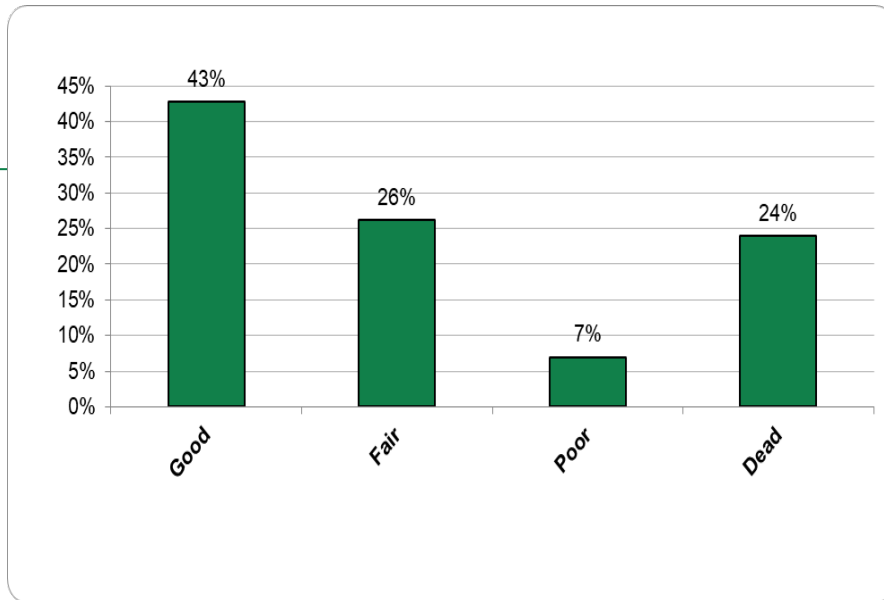
- Strong possibility that red mulberry is present
- Endangered species in MA



Tree Size



Condition Rating

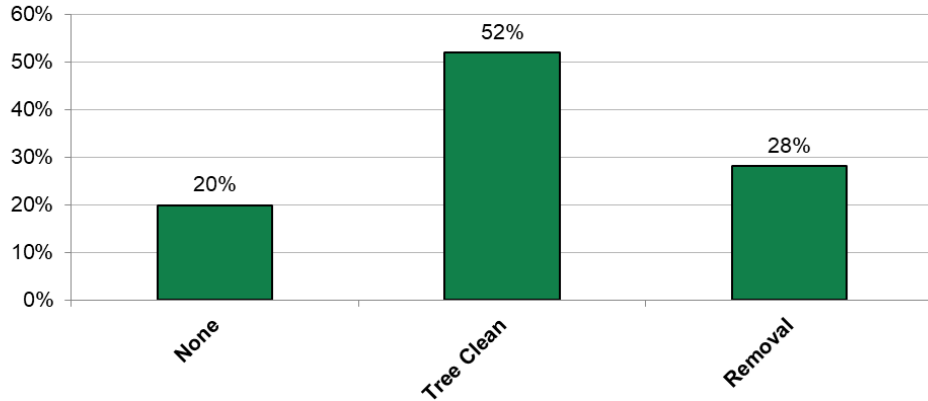


Condition Categories

- Good - Tree is healthy and has few if any issues requiring attention
- Fair - Tree possesses some issues with could be corrected over time and/or through maintenance
- Poor - Tree possesses irreconcilable issues, some of which may elevate its risk
- Dead - Tree exhibits no signs of life and likely does not provide environmental benefits to the urban canopy.

Recommended Maintenance

Maintenance Categories



- None - No maintenance recommended
- Tree Clean - Pruning of one or multiple stems/branches recommended
- Removal - Tree is either dead, or its risks may outweigh its benefits

Note: These recommendations are based on the assumption that new public areas will be built around them and may not be necessary otherwise

Questions?



Greg Baldwin, - Mass. Certified Arborist, ISA certified arborist, Site Manager – Davey Resource Group, Inc.

Website: <https://www.davey.com/environmental-consulting-services/local-offices/new-england-area/>

Email:
greg.baldwin@davey.com



About Davey Resource Group, Inc.



Recognized industry leader in providing professional urban forestry services to communities across the United States

400+

Community Urban Forest Plans Developed

1 Million+

Trees Inventoried each year

History

Part of the Davey Tree Expert Company. Expertise and knowledge rooted in a tree care company **founded over 140 years ago.**

100+

Urban Tree Canopy Assessments

TreeKeeper Canopy

DRG's Tree Canopy Prioritization Software

TreeKeeper

DRG's Inventory Management Software

235+ Current TreeKeeper Clients