

149 PLEASANT STREET ARLINGTON MA,
PRODUCTS & MATERIALS

WINDOW NOTES:

1. ALL WINDOWS TO BE WOOD EXTERIOR.
2. DOUBLE HUNG AND AWNING WINDOWS ARE SPECIFIED AS THE MARVIN WOOD ULTIMATE LINE. OR EQUAL MAY BE SUBSTITUTED BUT MUST HAVE SAME SIZES AND SPECIFICATIONS.
3. 7/8" SIMULATED DIVIDED LIGHT WITH ALUMINUM SPACER BAR
4. HISTORIC SILL
5. EXTERIOR WINDOW TRIM TO BE WOOD 1X5 WITH BACKBAND

DOOR NOTES:

1. 36" W X 84" H
2. 6803 WITH DENTIL SHELF BY SIMPSON DOOR, OR EQUAL
3. TRIM TO BE WOOD 1X5 WITH BACKBAND

ROOFING

1. ROOFING MATERIAL TO BE ARCHITECTURAL STYLE COMPOSITE ASPHALT SHINGLE.
2. GUTTERS TO BE FIBERGLASS IN SHAPE OF WOOD GUTTER BY THE FIBERGLASS GUTTER COMPANY, PEMBROKE, MA OR EQUAL

FOUNDATION NOTES:

1. FOUNDATION WALLS ARE POURED IN PLACE CONCRETE WITH BRICK VENEER

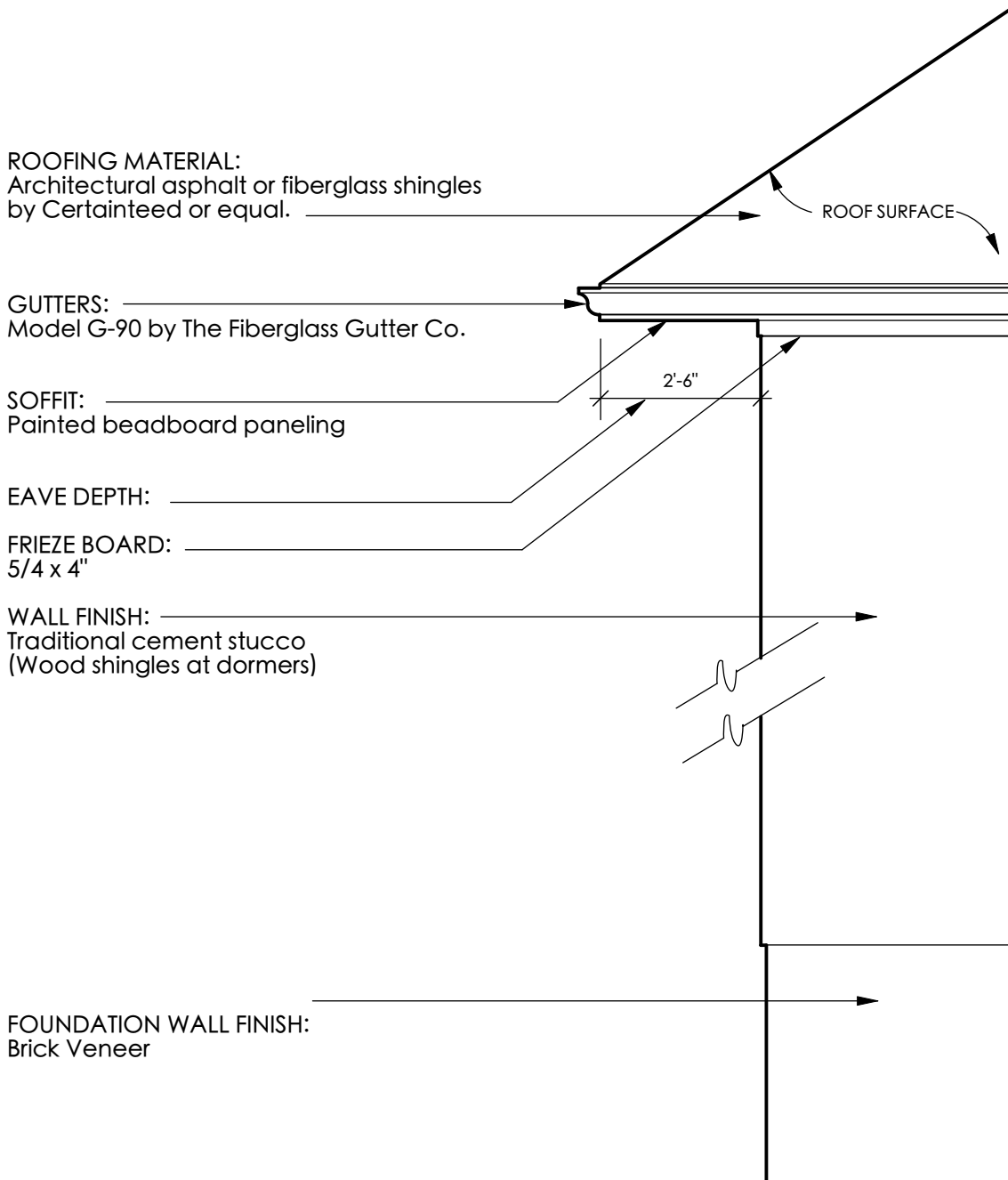
PORCHES AND STAIRS:

1. ALL PORCH AND STAIR ELEMENTS INCLUDING DECKING, EXCLUDING COLUMNS AND RAILINGS, TO BE WOOD ONLY.
2. COLUMNS TO BE TURNCRAFT OR EQUAL:
12" DURAGLASS TUSCAN NON-TAPERED SHAFT WITH TUSCAN BASE AND CAP.
3. 1/2" WROUGHT IRON BALUSTERS.
4. 1" x 1" WROUGHT IRON POSTS
5. 2" WROUGHT IRON TOP AND BOTTOM RAILS

EXTERIOR WALL FINISH:

1. 7" TO WEATHER WOOD SHINGLES W/ WOVEN CORNERS ON ALL DORMER FRONT AND SIDES
2. TRADITIONAL CEMENT STUCCO ON ALL HOUSE FACADES.
3. ALL DECK AND PORCH MATERIALS TO BE WOOD.

149 PLEASANT STREET ARLINGTON MA
PRODUCTS & MATERIALS



WINDOWS 1



Products Solutions Inspira



Products Solutions Inspira



INTERIOR EXTERIOR

Ultimate Wood Double-hung w/ 7/8" s.d.l. & alum. spacer bar; historic sill; clear insulated glass; half fiberglass screen; by Marvin.

Simulated Divided Lite with Spacer Bar (SDLS)



Paired with SDL bars on the exterior of the glass, a spacer bar is installed between the glass, creating an even closer match to the Authentic Divided Lite look.



Shown clad but available in wood

INTERIOR EXTERIOR

Ultimate Wood Awning w/ 7/8" s.d.l. & alum. spacer bar; fiberglass screen; historic sill

Ultimate Wood Double Hung

The all-wood Marvin Signature® Ultimate Wood Double Hung window is a classic style ideal for historic projects where a wood exterior is needed to match original architectural details. Flexible design options like wood species and stains coupled with single hung or stationary sash configurations assist with historical accuracy, while wash mode makes cleaning easy.

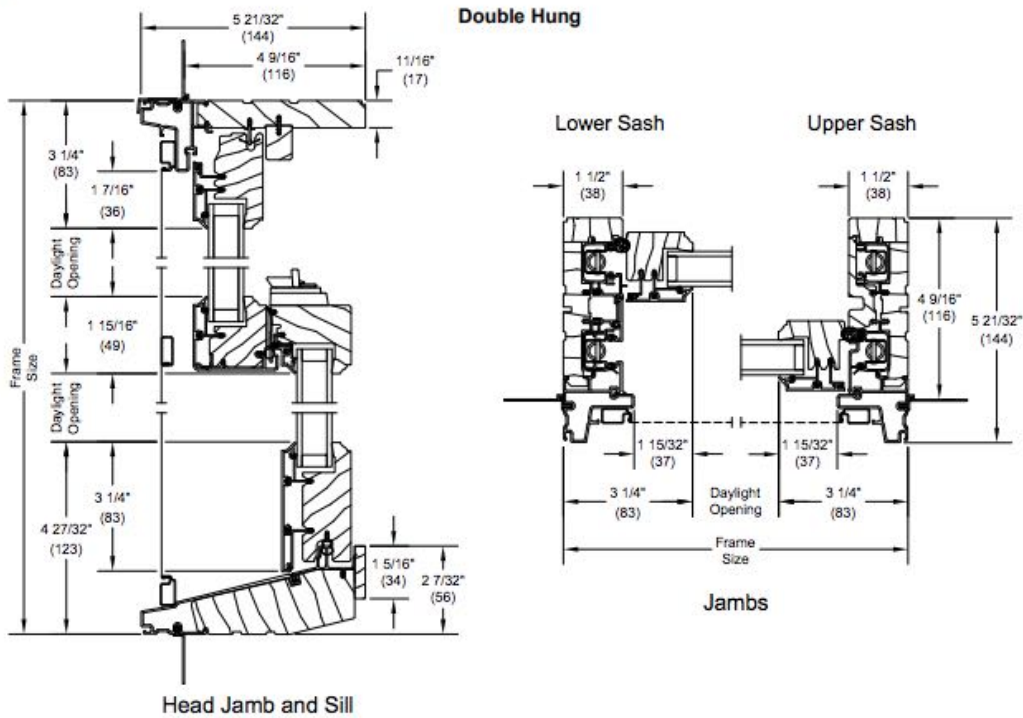
MARVIN WOOD DOUBLE HUNG WINDOW DETAILS



Ultimate Double Hung G2

Section Details: Operating

Scale: 3" = 1' 0"

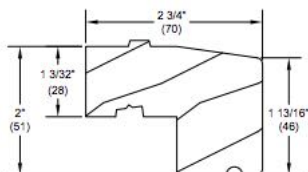


Essential Glider

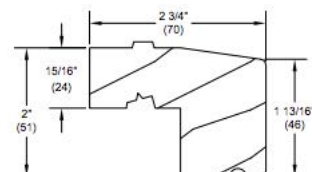
Section Details: Operator

Scale: 3" = 1' 0"

HISTORIC SILLS



W2165 - 2" Thick Subsill (UWDH)



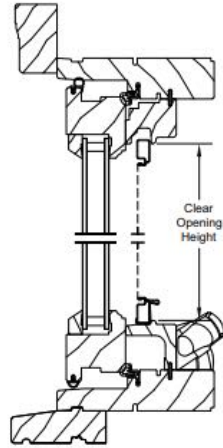
W10340 - 2" Simulated Thick Subsill (UWCA)

MARVIN WOOD AWNING WINDOW DETAILS

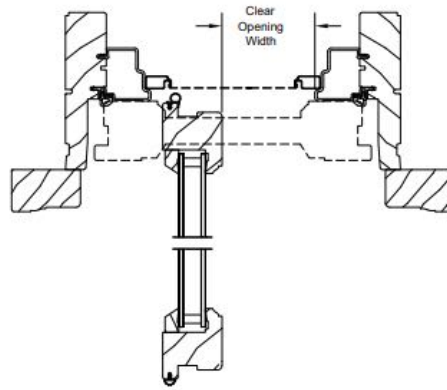


Ultimate Wood Casement, Awning and Picture

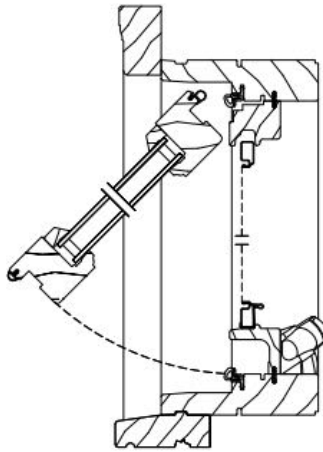
Egress and Vent Opening Measurement for Full Frame Casement and Awning



Head Jamb and Sill



Jambs



Head Jamb and Sill

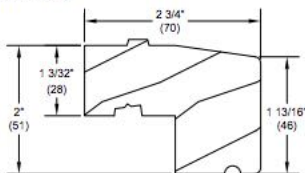


Accessories

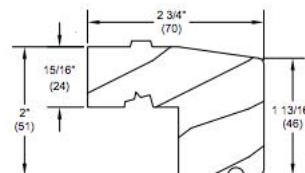
Wood Subsills

Not to Scale

HISTORIC SILLS

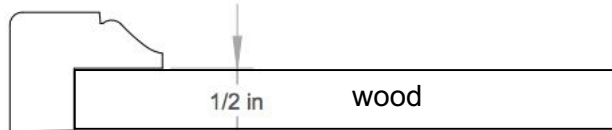


W2165 - 2" Thick Subsill (UWDH)



W10340 - 2" Simulated Thick Subsill (UWCA)

DOORS



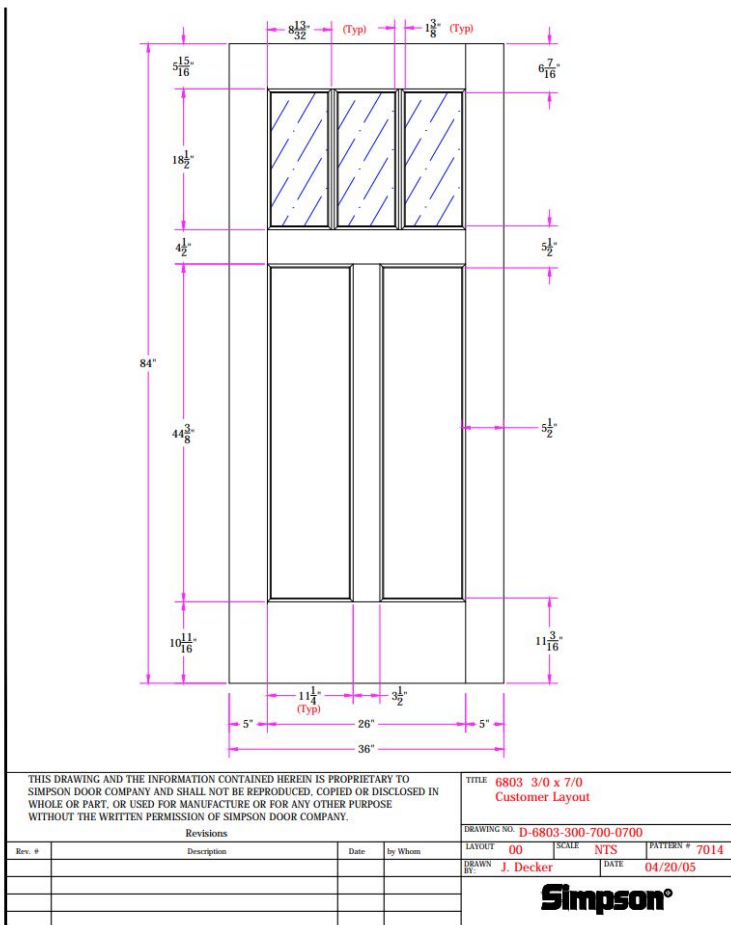
A&M # 60124
 7/8" X 1-3/16"

Window and door trim



36"X80" fir exterior door
 model# 6803 with small
 dentil shelf #9540 by
 Simpson Doors

NO SCREEN DOOR



GUTTER AND DOWNSPOUT



THE FIBERGLASS GUTTER COMPANY
HANDMADE IN THE USA

- Home
- About Us
- Fiberglass Gutter Advantage >
- Fiberglass Gutter Profiles**
- Fiberglass Gutter Info >
- Fiberglass Gutter Pictures
- This Old House
- News & Events
- Request A Free Estimate
- Careers

Our Standard Fiberglass Gutter Profiles

Our standard fiberglass wood replacement gutter profiles are hand laid and come with genuine woodgrain texture and have a protective gelcoat shell. Our standard profiles are available in vintage white and in [custom colors](#).



G-90

Galvanized Steel Round Corrugated Downspouts

Item # GARCD3XG26X | 3 Rnd. Corrugated Downspout | Galvanized 26 GA



DOWNSPOUTS TERMINATE INTO PVC PIPE EXTENSIONS LEADING TO DRY WELLS. See Drawings

COLUMN
Poly-Classic® *FRP Columns*
Tapered Round Shaft Specifications

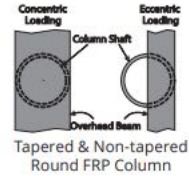


FRP Tuscan Tapered
Round Smooth

10" FRP Tuscan Tapered
Round Smooth Column by
Turncraft

Available fluted and unfluted in a wide range of sizes. Flutes in most 8", 10", and 12" diameter tapered shafts are molded right into the shaft, providing consistent Ionic fluting. All sizes can also be custom-fluted for specific opening heights, and adjusted for the cap and base chosen. When shafts are custom fluted, typically the flutes end 1" from the top of the base.

| Tapered Round FRP Shafts Available Heights and Load Capacities | | | | | | | | | | | | | | Concentric Load * | Eccentric Load * |
|--|----|----|----|----|-----|-----|-----|-----|-----|-----|-----|-----|--|-------------------|------------------|
| Column Bottom Diameter ‡ | 5' | 6' | 8' | 9' | 10' | 12' | 14' | 16' | 18' | 20' | 22' | 24' | | | |
| 6" | ✓ | ✓ | ✓ | | | | | | | | | | | 6,000 lb. | 6,000 lb. |
| 8" | ✓ | ✓ | ✓ | ✓ | ✓ | | | | | | | | | 10,000 lb. | 6,600 lb. |
| 10" | ✓ | ✓ | ✓ | ✓ | ✓ | ✓ | | | | | | | | 14,000 lb. | 10,720 lb. |
| 12" | ✓ | ✓ | ✓ | ✓ | ✓ | ✓ | ✓ | ✓ | | | | | | 18,000 lb. | 13,200 lb. |
| 14" | | | ✓ | ✓ | ✓ | ✓ | ✓ | ✓ | ✓ | ✓ | | | | 20,000 lb. | 11,520 lb. |
| 16" | ✓ | ✓ | ✓ | ✓ | ✓ | ✓ | ✓ | ✓ | ✓ | ✓ | | | | 20,000 lb. | 13,200 lb. |
| 18" | | | ✓ | ✓ | ✓ | ✓ | ✓ | ✓ | ✓ | ✓ | ✓ | ✓ | | 20,000 lb. | 9,040 lb. |
| 20" | | | ✓ | ✓ | ✓ | ✓ | ✓ | ✓ | ✓ | ✓ | ✓ | ✓ | | 20,000 lb. | 18,960 lb. |
| 24" | | | ✓ | ✓ | ✓ | ✓ | ✓ | ✓ | ✓ | ✓ | ✓ | ✓ | | 20,000 lb. | 13,200 lb. |



‡ Actual shaft width may be smaller than nominal size shown.
* Load capacities are reduced when loads are not centered. Full documentation regarding eccentric load capacities can be found online at Turncraft.com/pdf/EccentricLoad.pdf and Turncraft.com/pdf/LoadAddendum.pdf. Please refer to the online documentation regarding maximum eccentricity (beam offset from center) and other specifications.

All Poly-Classic® FRP Columns are available with custom fluting.
✓ Available unfluted.
• Available with standard flutes.

PLAN TYPES

Poly-Classic® FRP Columns are available in the plan types below. Please specify when you order. (Fractional components shown are typical. Customer may specify actual returns, wall thicknesses, etc.)

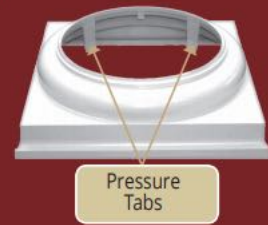


TIMESAVER CAP AND BASE

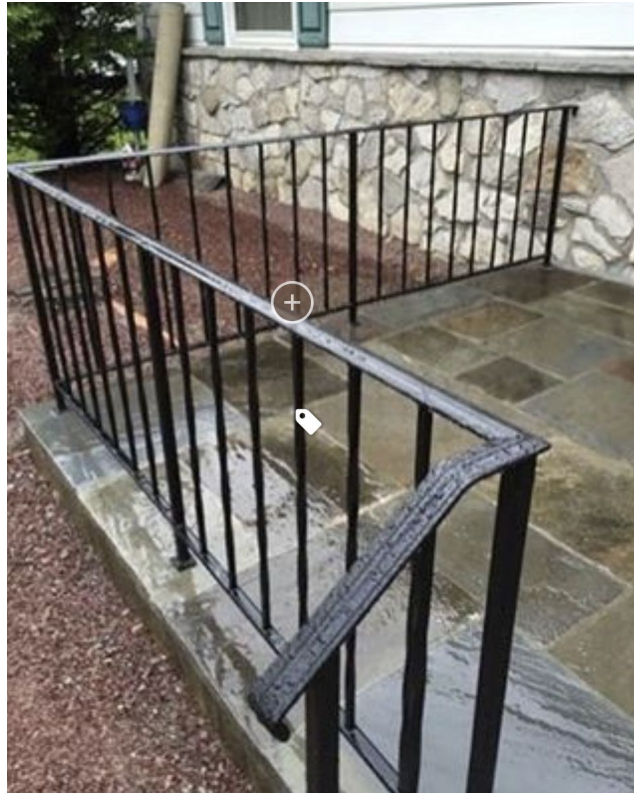
New to the Turncraft product line, our 8" Square TimeSaver Cap and Base employs the same Quick-Fit installation pressure tabs as our round 8", 10", and 12" TimeSaver products. Our TimeSaver cap and base offers the easiest and quickest installation in the industry.



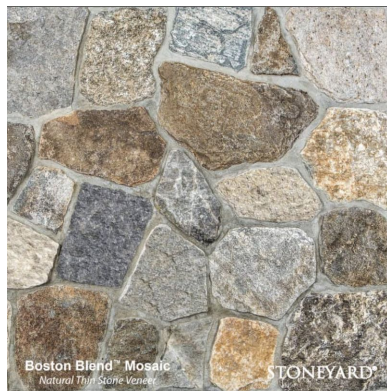
- Made out of fiber-reinforced recycled ABS (acrylonitrile butadiene styrene)
- Designed for use on round FRP columns in 8", 10", and 12" sizes
- Made with 95% recycled material
- Extremely strong and durable
- Self aligning with no fasteners
- Excellent paint adhesion
- Fast installation



149 PLEASANT STREET ARLINGTON MA
PRODUCTS & MATERIALS



WROUGHT IRON RAILINGS WITH 1/2" SQUARE BALUSTERS, 1" POSTS AND 2" HANDRAIL



BOSTON BLEND MOSAIC

Boston Blend® Mosaic, a natural stone product that can elevate the look of any space with its elegance and charm. The unique texture and color variation of this mosaic create depth and character in your design. With a wide range of colors including brown, gray, white, and beige, you have plenty of options to choose from.

[View Details](#)

[Request a Quote](#)

RETAINING WALL STONE VENEER