



Arlington High School Building Project

AHS Construction Update – September 26th, 2024

Arlington HS Construction Schedule: April 2020 – September 2025

Construction Details

Phase 1 and 2 construction is complete and all parts of the new school are finished except for the athletics wing. The new Menotomy Preschool and new district offices are also complete. Phase 3 has begun where part of the old school will be demolished. Those areas are closed off from the existing school during the next phase of construction.

COVID-19 Update

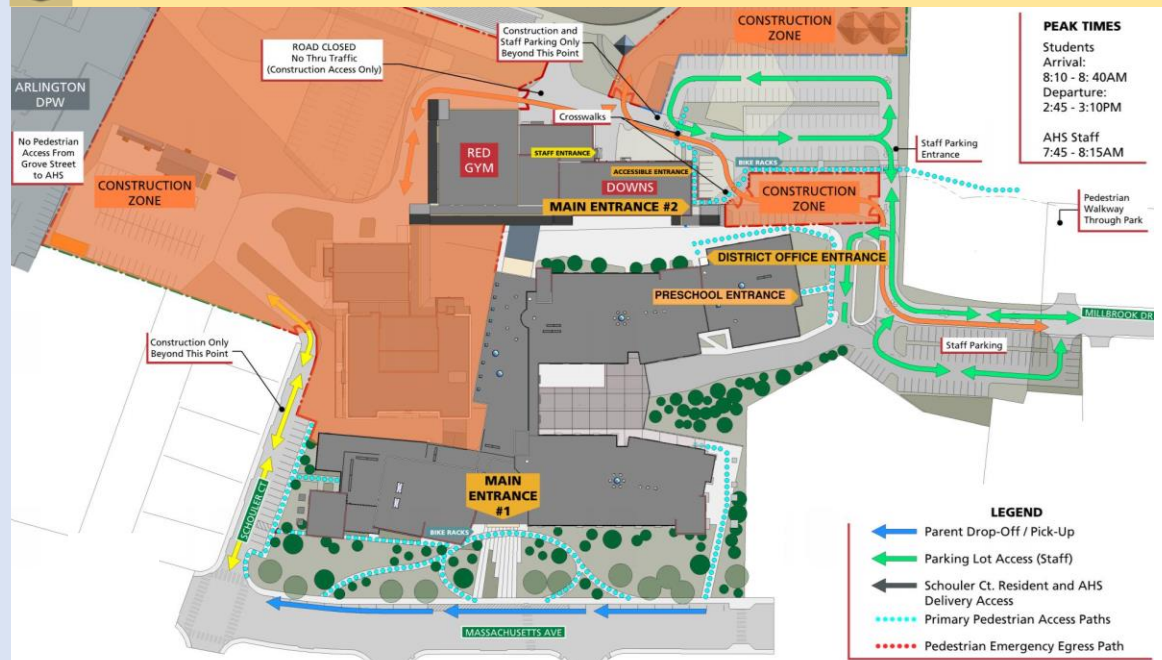
The health and safety of the community and workers on-site are of the highest priority and were taken into consideration in all project-related decisions. The Town of Arlington continues to monitor all state and federal guidelines regarding best practices during this unusual time and will modify recommendations as necessary to maintain safety and health for our community and construction workers.

Sign up for Weekly Construction Updates
<https://ahsbuilding.org/news/construction-updates/>
For more information, visit:
www.ahsbuilding.org
Email questions or concerns to:
ahsbuilding@arlington.k12.ma.us

For immediate, on-site assistance contact Hal Raymond, Skanska Site Representative, (617) 352-8593



PHASE 3 BUILDING CONSTRUCTION (November 2023 – February 2025)



Construction Look Ahead – Week of September 30th, 2024

The above diagram covers all work to be performed during the current phase. Specific work to be performed this week includes:

Public Way Impacts:

- Deliveries ongoing
- Traffic light on Mill Street and Millbrook Drive is activated and in flashing mode. A date in the near future for it to be in full operation will be determine and coordinated with the Department of Public Works.

General Site Activities:

- Continue with exterior brick and finish curtainwall installation
- Continue interior framing and drywall. Start interior painting.
- Installation of mechanical, plumbing, and electrical systems
- Start exterior framing of Blackbox Theater
- Place concrete sidewalk from plaza to Mass Ave.
- Install rebar and place concrete on the Minuteman Bike Path and ramp.
- Installation of electrical in the Toilet Facility Building
- Material Stockpile/Temp Construction Lot for contractor storage and parking
- Schouler Court:
 - Closed to public Access, except abutters as of 11/8/23. Construction vehicles entering and exiting project site.

Weekend Work/Holiday Work/Night Work:

- Saturday work is required for the foreseeable future.



Skanska USA Inc.
Owner's Project Manager



Consigli Construction Co., Inc.
Construction Manager at Risk



HMFH Architects, Inc
Architect

ARLINGTON HIGH SCHOOL

WEEKLY UPDATE – WEEK OF SEPTEMBER 30TH, 2024



Photograph 1: Planters and benches installed at plaza.



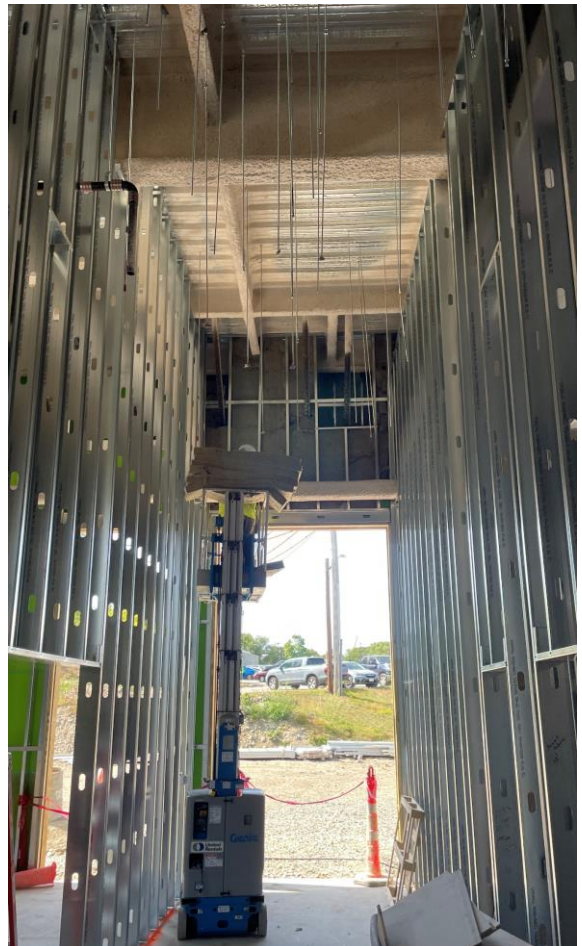
Photograph 2: West Elevation (Schouler Ct).

ARLINGTON HIGH SCHOOL

WEEKLY UPDATE – WEEK OF SEPTEMBER 30TH, 2024



Photograph 3: Rebar of radius at Minuteman Bike Path Ramp.



Photograph 4: Interior framing of corridor of LABBB