



**Project # 24-45
HILLS' HILL MOUNTAIN BIKE FACILITY
ARLINGTON, MA**

ADDENDUM NO. 3

October 18, 2024

Notice to Bidders

The attention of all bidders submitting proposals for "Hill's Hill Mountain Bike Facility" is called to the following Addenda to the specifications and plans. The items set forth herein, whether of omission, addition or substitution are to be included in, and form part of the specifications and plans of the above-named project for bids to be received as advertised.

**PLEASE BE SURE TO ACKNOWLEDGE RECEIPT
OF THIS ADDENDUM ON THE BID FORM**

The following clarifications, modifications, deletions, and additions are hereby incorporated into and become part of the Contract Documents. Contractors shall acknowledge receipt of this addendum with their bid submission.

GENERAL CLARIFICATIONS

NONE

WRITTEN CHANGES AND/OR CLARIFICATIONS TO SPECIFICATIONS

NONE

QUESTIONS AND CLARIFICATIONS

1. *Clarify that you don't need pricing for 1a, 1b, 2a, 3a.*

W&S Response: For clarification, the Contractor shall DELETE Items 1a, 1b, 2a, and 3a accordingly. The contractor shall own in their bid the price for these items.

2. *Is 1b is this live tree only*

W&S Response: For clarification, Item 1b shall include a total of 150 total of both live and dead trees collectively.

3. Clarify quantities for 1c, 1d, 1e

W&S Responses: For clarification, Items 1c, 1d, and 1e are supplemental unit prices for the engineer's estimated quantities to be owned by the contractor for tree work required beyond the 150 total trees included in their base bid price.

1c: For clarification, the Contractor shall provide a unit price, per tree, for falling a tree greater than 4" DBH up to 50 total trees beyond the total of the 150 trees owned in the base contract bid per Item 1b as clarified above.

1d: For clarification, the Contractor shall provide a unit price, per tree stump greater than 4" DBH, grinding a stump 12" below finished grade, complete. For bidding purposes, the Contractor shall assume up to 30 total stumps may need to be ground 12" below grade.

1e: For clarification, the Contractor shall provide a unit price, per tree stump greater than 4" DBH, removal and disposal, complete. For bidding purposes, the Contractor shall assume up to 20 total tree stump removals complete.

4. 4a should say furnish and install fill material

W&S Response: For clarification, Item 4a shall include furnishing and installing additional common borrow fill material up to 200 CY beyond the required imported common fill material owned in the base bid contract price, complete.

5. Clarify subbase material for trails and features. Detail shows dense grade, notes say common fill. Based on comments it sounds like dense grade is not recommended

W&S Response: Common Borrow Fill may be used as a base material to achieve the general shape of the features, pending it is able to achieve the specified compaction percentage per specifications and hold the approved shape of the various features throughout the project area. The trail surfacing and feature cap material is as noted in the specifications and on drawing AS-01.

6. Confirm ledge/rock will not be removed.

W&S Response: Correct, there is no anticipated ledge or rock removal within the project area.

7. Add note to remove existing jumps and restore section of trail where they exist

W&S Response: Contractor shall own the complete removal and restoration of existing mountain bike trail features at locations indicated on Drawing L200 – SITE PREPARATION AND DEMOLITION PLAN, per attachment.

8. Does the assistance of the Town Arborist satisfy the conditions of the contract, or does the contractor need to have a certified Arborist on staff as the language specifies.

W&S Response: Yes, the Contractor may use the Town Tree Warden to satisfy the requirements of the contract. Please note, the Contractor may not hold up work based on the Tree Wardens availability. Should the Tree Warden not be available to assist, the Contractor must provide a certified Arborist at their own cost.

9. What is the anticipated payment schedule, and what milestones need to be reached to invoice for progress payments during the course of the project.

W&S Response: The contractor shall refer to “Town of Arlington Standard Contract General Conditions, Article 5-Compensation” for payment schedules and invoicing.

10. Section 1b of the Supplemental Pricing Schedule indicates a number (200) of items but specifies that the item is owned in base bid. Is this truly a base bid item or is it unit price.

W&S Response: For clarification, Item 1b refers to the total number of trees greater than 4” DBH to be owned by the Contractor in the base bid contract price. Item 1b may be DELETED per response 1 above as the quantity is owned in the base bid contract and not to be used as a supplemental unit price.

ATTACHMENTS:

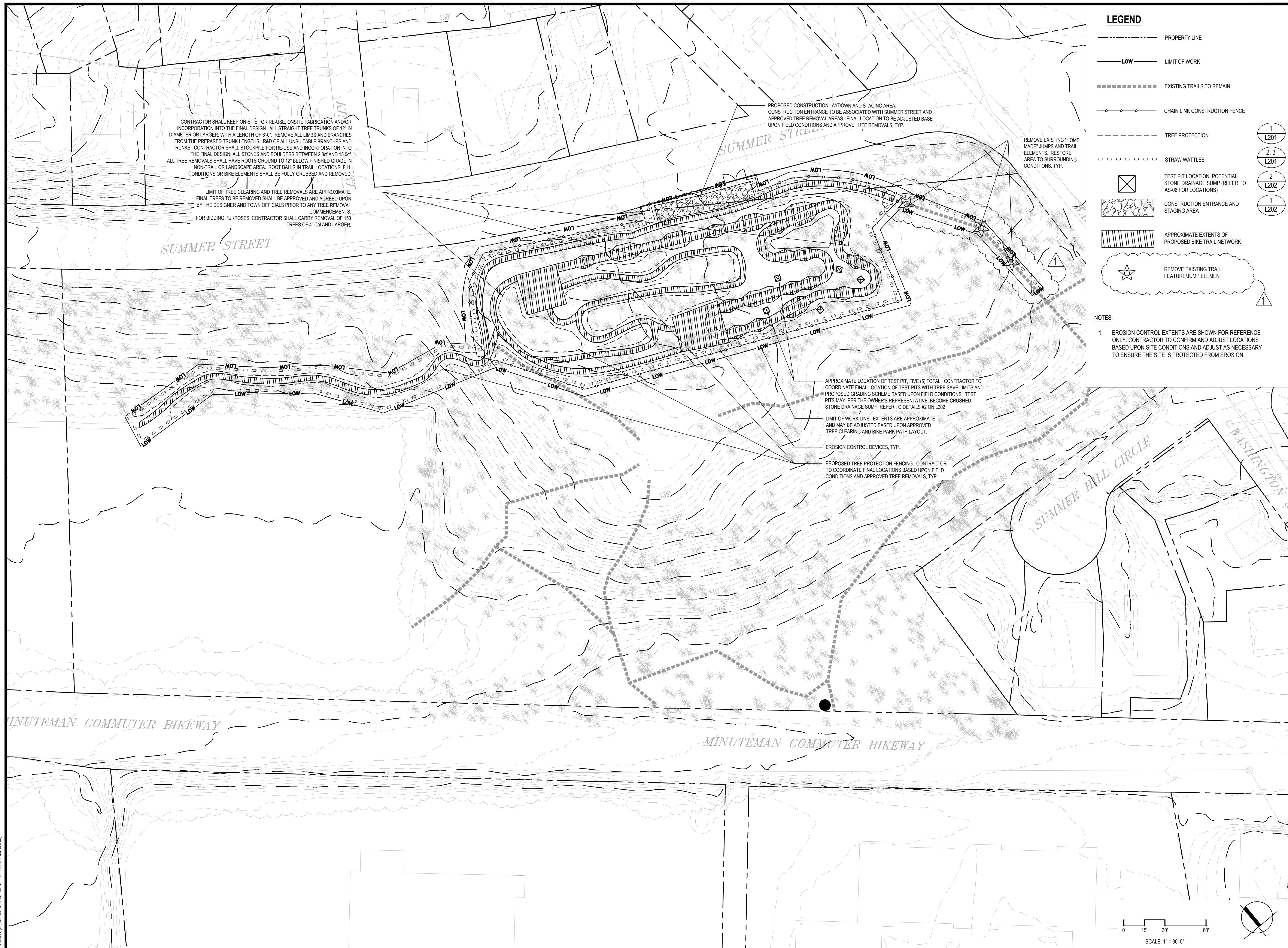
L200 - Site Preparation and Demolition.

All other terms and conditions of the Bid Documents remain unchanged.

ADDENDUM MUST BE ACKNOWLEDGED ON THE BID FORM. FAILURE TO ACKNOWLEDGE ANY OR ALL ADDENDA COULD RESULT IN REJECTION OF YOUR BID AS NON-RESPONSIVE.

James Feeney
Town Manager

END OF ADDENDUM NO. 3



CONTRACTOR SHALL KEEP ON-SITE FOR RE-USE, ON-SITE FABRICATION AND/OR INCORPORATION INTO THE FINAL DESIGN. ALL STRAIGHT TREE TRUNKS OF 12" IN DIAMETER OR LARGER, WITH A LENGTH OF 6'-0". REMOVE ALL LIMBS AND BRANCHES FROM THE PREPARED TRUNK LENGTHS. R&D OF ALL UNSUITABLE BRANCHES AND TRUNKS. CONTRACTOR SHALL STOCKPILE FOR RE-USE AND INCORPORATION INTO THE FINAL DESIGN. ALL STONES AND BOULDERS BETWEEN 2.0ft AND 15.0ft. ALL TREE REMOVALS SHALL HAVE ROOTS GROUND TO 12" BELOW FINISHED GRADE IN NON-TRAIL OR LANDSCAPE AREA. ROOT BALLS IN TRAIL LOCATIONS. FILL, CONDITIONS OR BIKE ELEMENTS SHALL BE FULLY GRUBBED AND REMOVED.

LIMIT OF TREE CLEARING AND TREE REMOVALS ARE APPROXIMATE. FINAL TREES TO BE REMOVED SHALL BE APPROVED AND AGREED UPON BY THE DESIGNER AND TOWN OFFICIALS PRIOR TO ANY TREE REMOVAL COMMENCEMENTS. FOR BIDDING PURPOSES, CONTRACTOR SHALL CARRY REMOVAL OF 150 TREES OF 4" Cal AND LARGER.

PROPOSED CONSTRUCTION LAYDOWN AND STAGING AREA. CONSTRUCTION ENTRANCE TO BE ASSOCIATED WITH SUMMER STREET AND APPROVED TREE REMOVAL AREAS. FINAL LOCATION TO BE ADJUSTED BASE UPON FIELD CONDITIONS AND APPROVE TREE REMOVALS, TYP.

REMOVE EXISTING "HOME MADE" JUMPS AND TRAIL ELEMENTS. RESTORE AREA TO SURROUNDING CONDITIONS, TYP.

APPROXIMATE LOCATION OF TEST PIT, FIVE (5) TOTAL. CONTRACTOR TO COORDINATE FINAL LOCATION OF TEST PITS WITH TREE SAVE LIMITS AND PROPOSED GRADING SCHEME BASED UPON FIELD CONDITIONS. TEST PITS MAY, PER THE OWNER'S REPRESENTATIVE, BECOME CRUSHED STONE DRAINAGE SUMP. REFER TO DETAILS #2 ON L202

LIMIT OF WORK LINE. EXTENTS ARE APPROXIMATE AND MAY BE ADJUSTED BASED UPON APPROVED TREE CLEARING AND BIKE PARK PATH LAYOUT.

EROSION CONTROL DEVICES, TYP.

PROPOSED TREE PROTECTION FENCING. CONTRACTOR TO COORDINATE FINAL LOCATIONS BASED UPON FIELD CONDITIONS AND APPROVED TREE REMOVALS, TYP.

LEGEND

- PROPERTY LINE
- LOW --- LIMIT OF WORK
- EXISTING TRAILS TO REMAIN
- CHAIN LINK CONSTRUCTION FENCE
- - - - - TREE PROTECTION
- - - - - STRAW WATTLES
- ☒ TEST PIT LOCATION, POTENTIAL STONE DRAINAGE SUMP (REFER TO AS-06 FOR LOCATIONS)
- ▨ CONSTRUCTION ENTRANCE AND STAGING AREA
- ▨ APPROXIMATE EXTENTS OF PROPOSED BIKE TRAIL NETWORK
- ☆ REMOVE EXISTING TRAIL FEATURE/JUMP ELEMENT

NOTES:

1. EROSION CONTROL EXTENTS ARE SHOWN FOR REFERENCE ONLY. CONTRACTOR TO CONFIRM AND ADJUST LOCATIONS BASED UPON SITE CONDITIONS AND ADJUST AS NECESSARY TO ENSURE THE SITE IS PROTECTED FROM EROSION.

Project: TOWN OF ARLINGTON

 HILL'S HILL MOUNTAIN BIKE FACILITY
 PROJECT # 24-45
 422 SUMMER STREET
 ARLINGTON, MA 02474

Weston & Sampson
 Weston & Sampson Engineers, Inc.
 85 Devonshire Street, 3rd Floor
 Boston, MA 02109
 978.532.1900 800.SAMPSON
 www.westonandsampson.com

Consultants:

 1960 W. Hawk Ct.
 Chandler, AZ 85286
 [c] 888.880.5112 [f] 888.841.2569
 www.pillardesignstudios.com

Revisions:

No.	Date	Description
1	10/14/2024	ADDENDUM #3

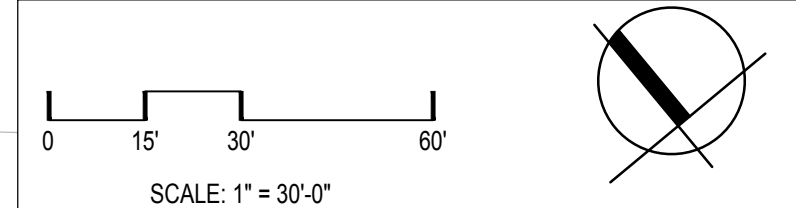
COA:
 Seal:

Issued For:
BIDDING DOCUMENTS

Date: SEPTEMBER 26, 2024
 Drawn By: JDM
 Reviewed By: JDM
 Approved By: BK
 W&S Project No.: ENG23-3028
 W&S File No.: ---

Drawing Title:
SITE PREPARATION & DEMOLITION

Sheet Number:
L200



P:\Arlington\10162023\10162023.dwg